

- Notes:
- Stormwater drainage to comply with BCA Clause F1.1
- Roof coverings to comply with BCA Clause F1.5
- Waterproofing to facilities to comply with BCA Clause F1.7
- Artificial lighting to toilet facilities to comply with BCA Clause F4.4
- Ventilation to toilet facilities to comply with BCA Clauses F4.5 & F4.6
- Emergency exit to have latch complying with BCA Clause D2.21
- Provide fire extinguishers for risk class c required by BCA Clause E1.6 & Table E1.6
- Water temperature at all fixed sanitary fixtures not to exceed 43.5°C and 50°C to all other fixtures
- Termite protection to AS 3660.1
- Install RPZ backflow device to comply with AS 3500 Part 4
- All materials used in construction of the building to BCA Spec. C11.1
- Exit doors & path of travel doors to comply with BCA Clauses D2.19, D2.20 & D2.21.
- All glazing to windows & doors to comply with AS 1228 1994.

Notes:

Proposed Storage Sheds

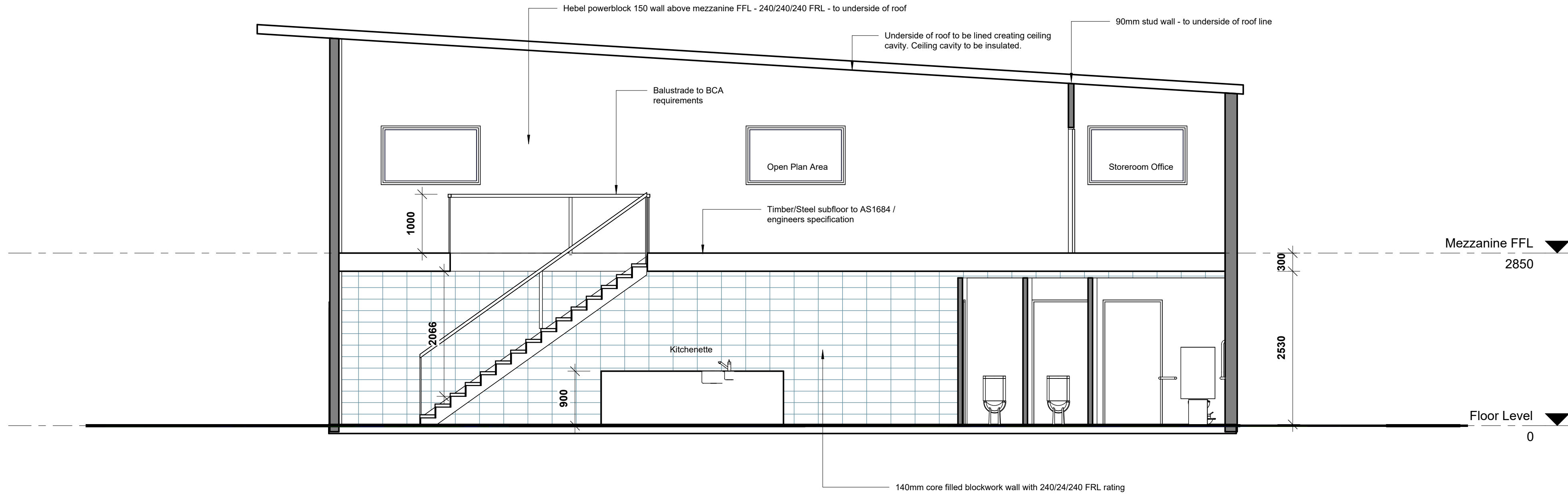
Brookfarms - Cape Byron Distillery

Lot 5 DP 594645 80 St Helena Road McLoeds Shoot

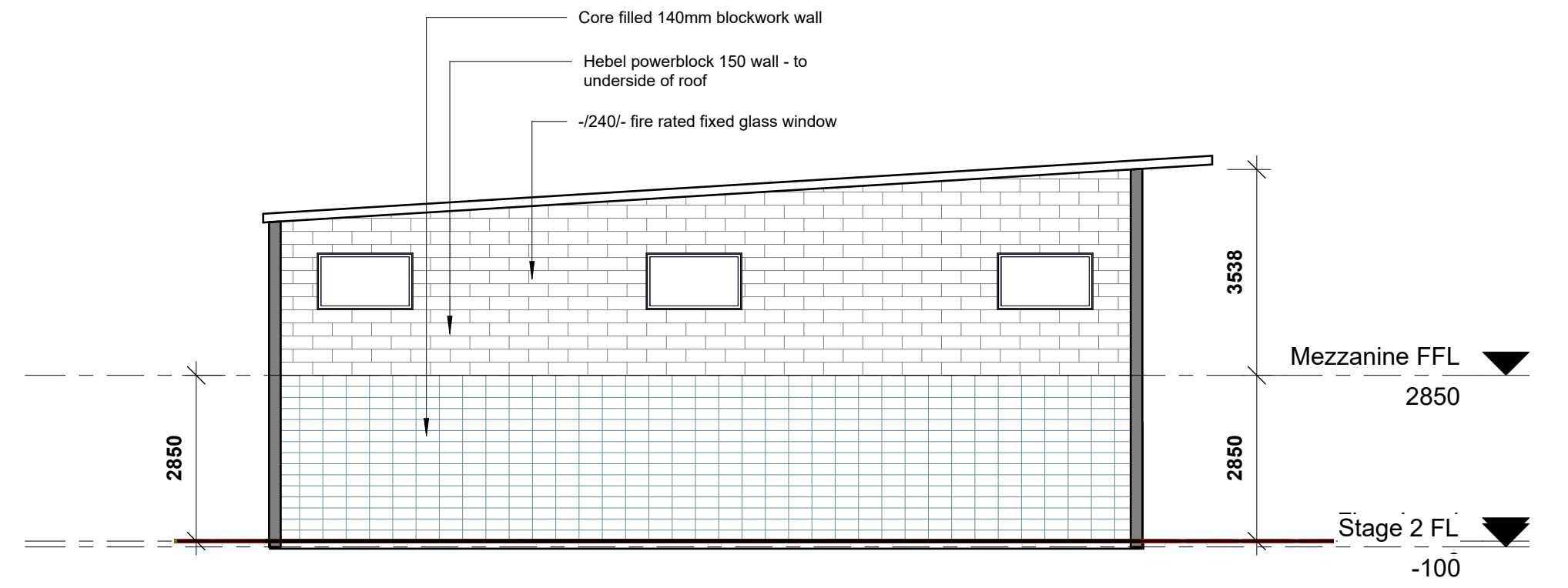
Proposed Storage Sheds

Floor Plan

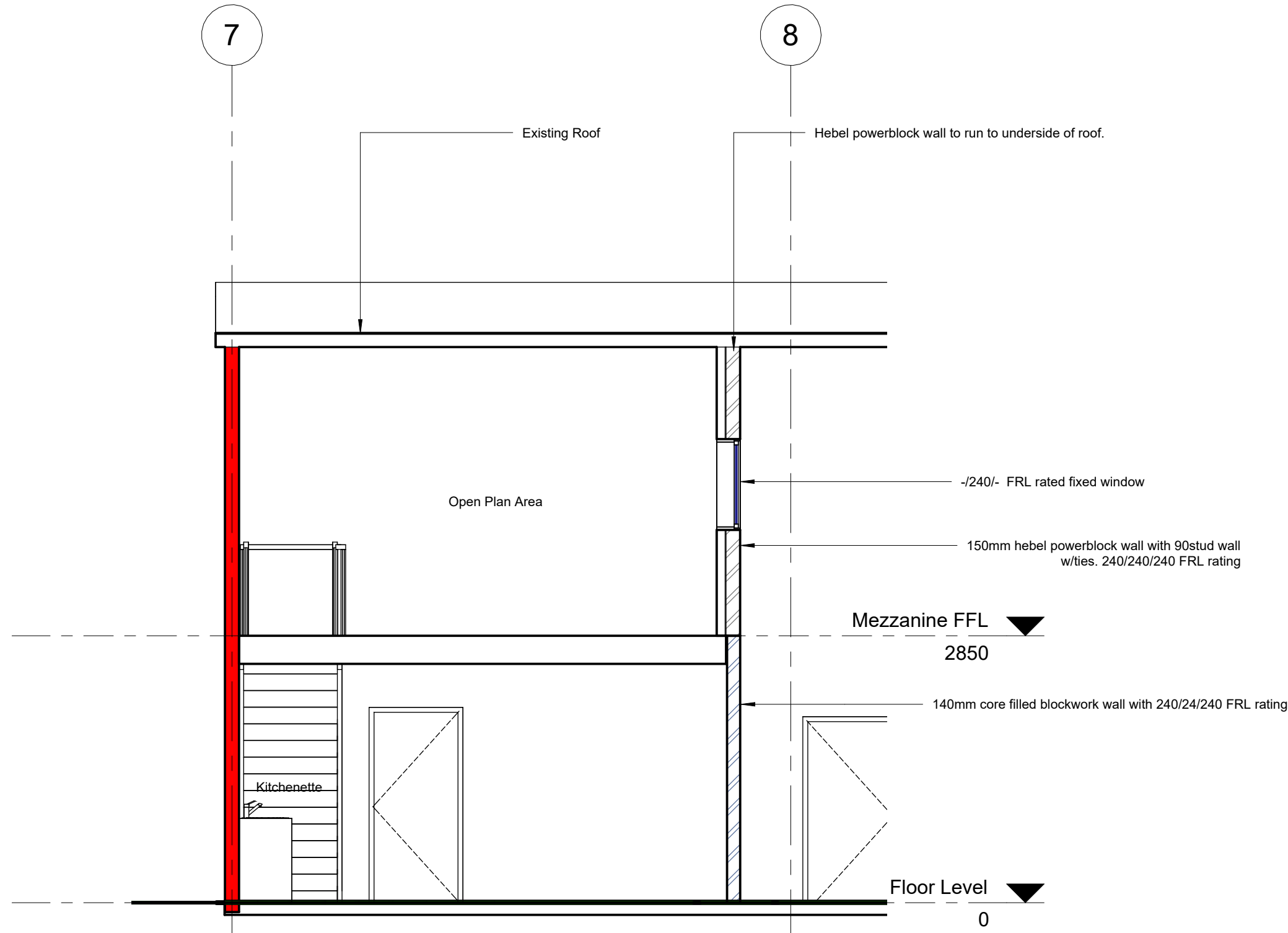
Project number	C19-079	A02f
Date	May22	
Drawn by	CW/MP	
Checked by	MP	Scale 1 : 200 © Copyright



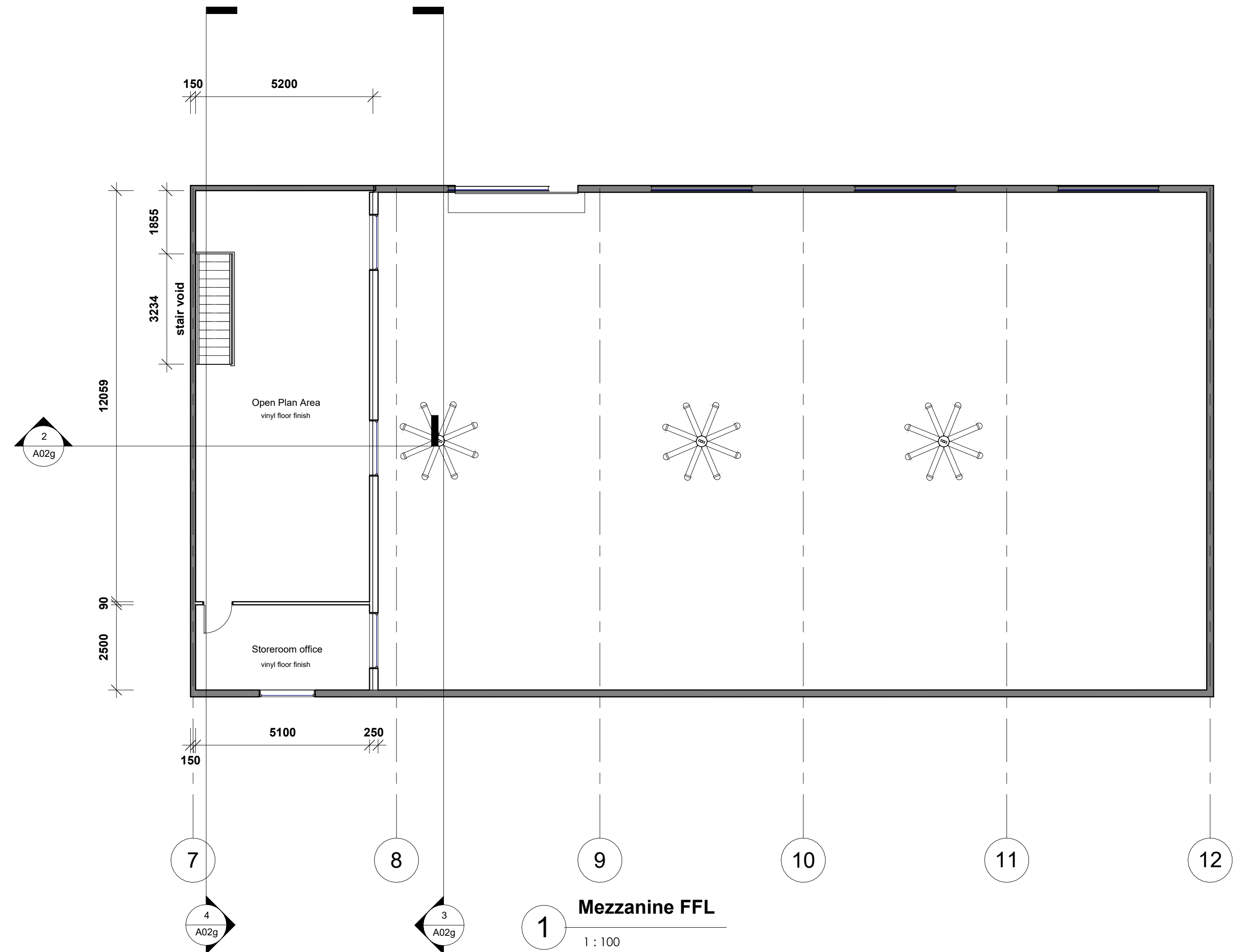
4 Section B
1 : 50



3 Section D
1 : 100



2 Section C
1 : 50



1 Mezzanine FFL
1 : 100



AGS Commercial Pty Ltd
172 Casino Street, South Lismore
PO Box 480 Lismore NSW 2480
phone 02 66223745
fax 02 66219455
www.agscommercial.net.au
RICHMOND VALLEY BUILDING DESIGN

No	Description	Date	No	Description	Date
g	4 hour fire wall, mezzanine additions	17/05/22			
h	reduction in window quantity	08/06/22			

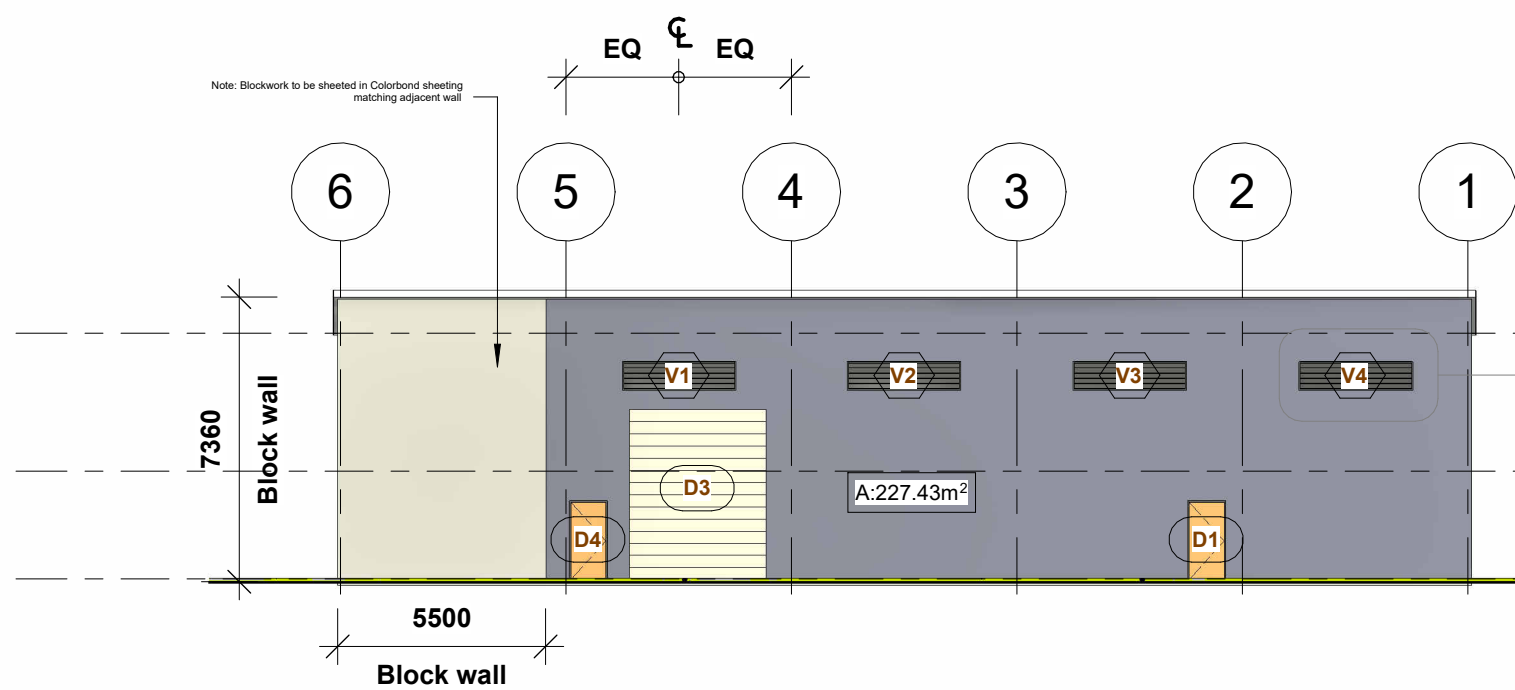
Notes:

Proposed Storage Sheds

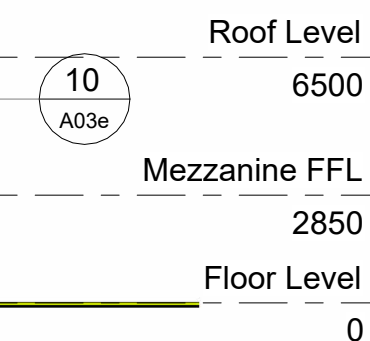
Brookfarms - Cape Byron Distillery
Lot 5 DP 594645 80 St Helena Road McLoeds Shoot

Mezzanine Details			
Project number	C19-079	A02g	
Date	May22		
Drawn by	MP		
Checked by	MP		
Scale	As indicated	© Copyright	

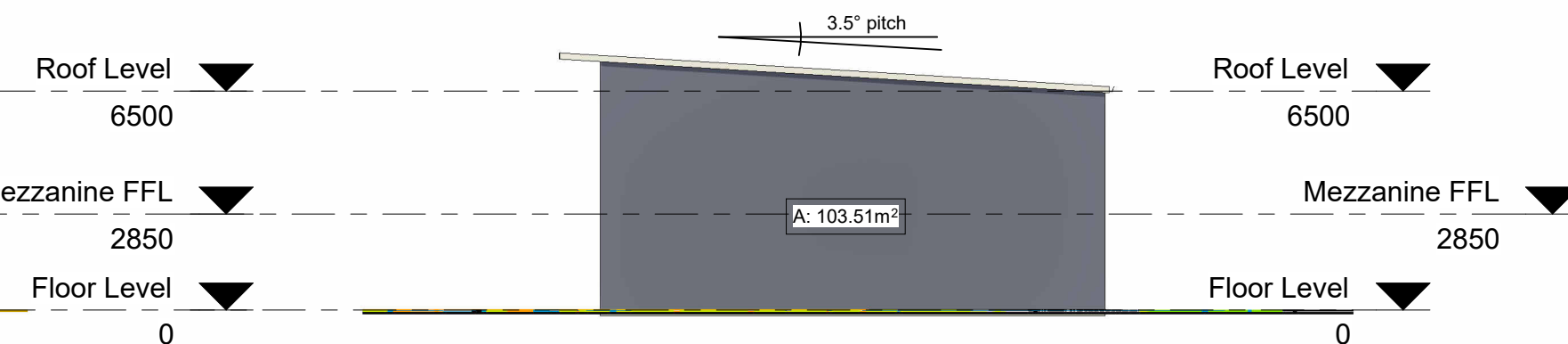
06/06/22 14:09:25



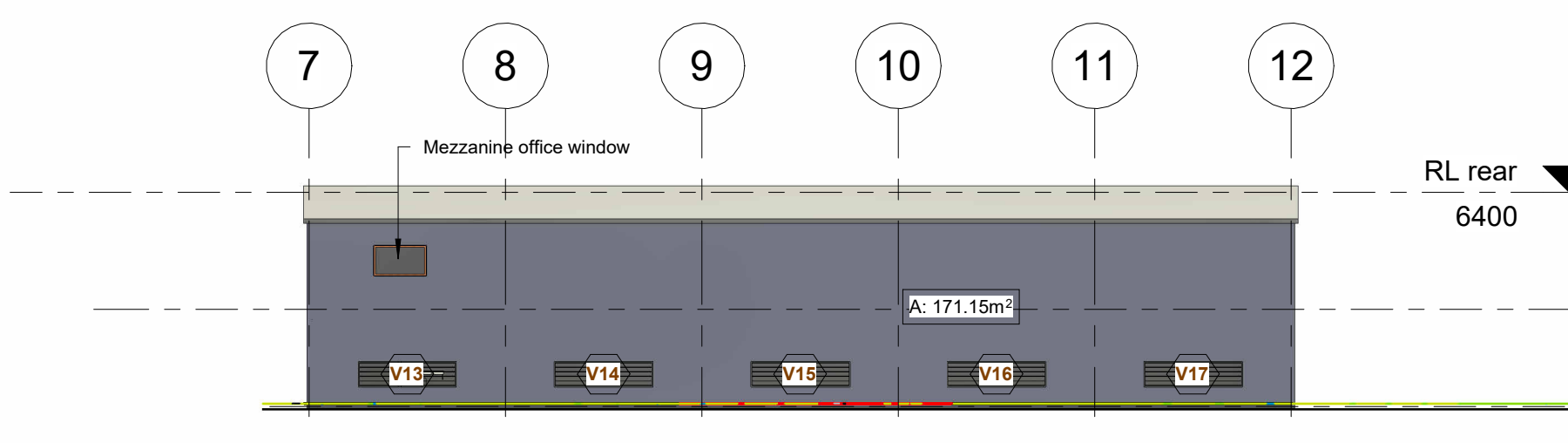
1 Front Elevation Shed 1
1 : 200



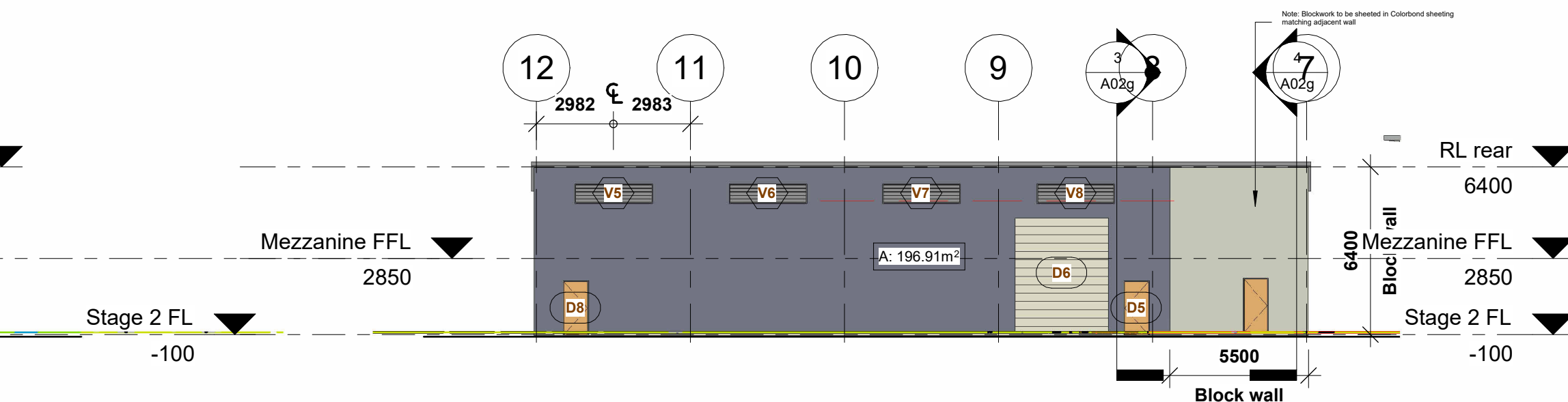
4 Rear Elevation Shed 1
1 : 200



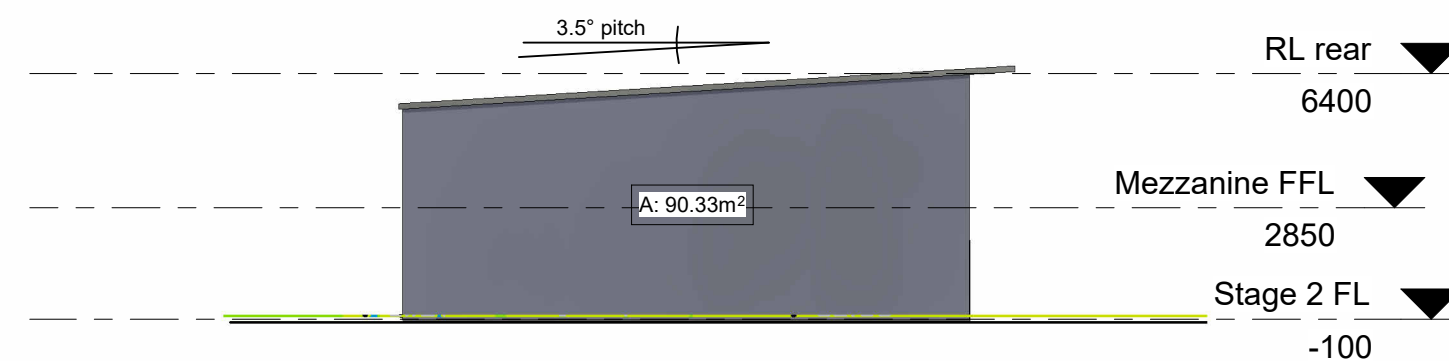
6 Side Elevation Shed 1
1 : 200



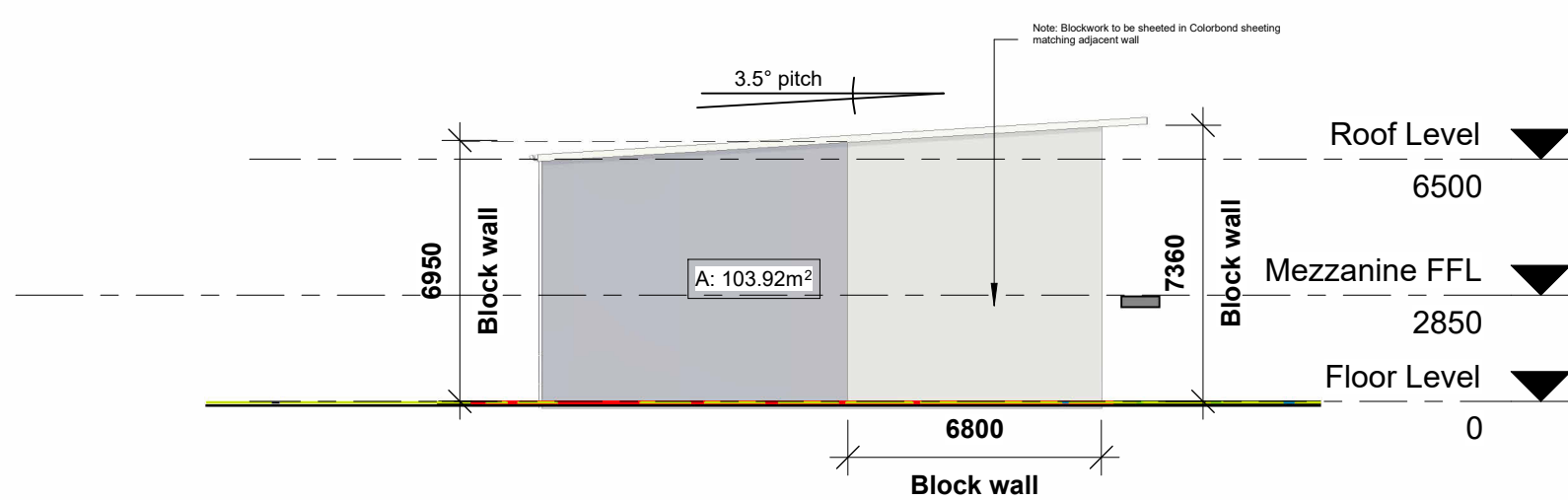
3 Rear Elevation Shed 2
1 : 200



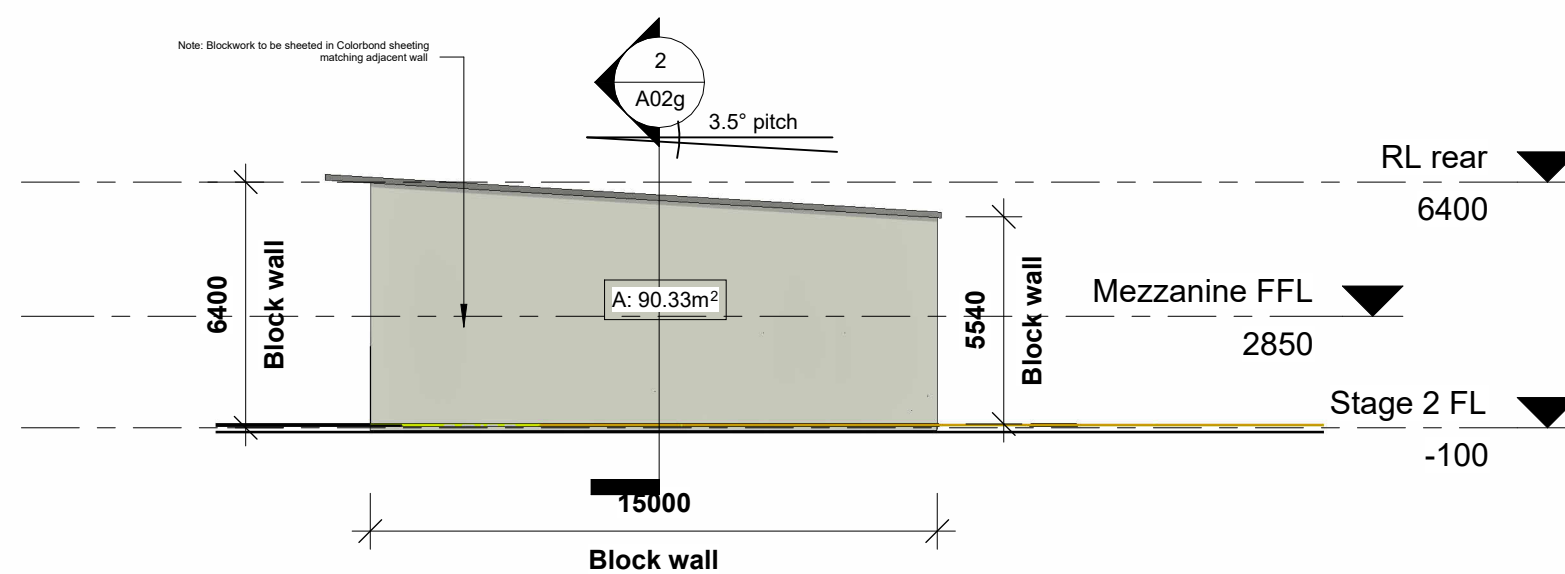
2 Front Elevation Shed 2
1 : 200



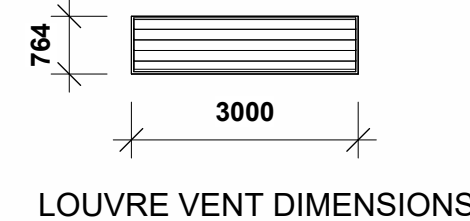
5 Side Elevation Shed 2
1 : 200



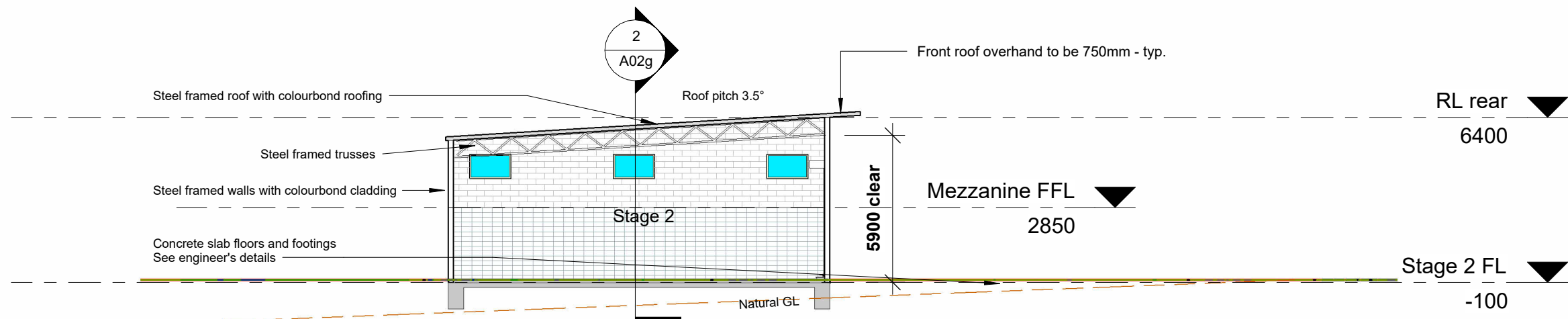
7 Side Elevation A Shed 1
1 : 200



8 Side Elevation A Shed 2
1 : 200



Window Schedule						
Mark	Description	Height	Width	Material	Remarks	Sill Height
V1	louvre vents	764	3000	to be confirmed	operable	5000
V2	louvre vents	764	3000		operable	5000
V3	louvre vents	764	3000		operable	5000
V4	louvre vents	764	3000		operable	5000
V5	louvre vents	764	3000		operable	5000
V6	louvre vents	764	3000		operable	5000
V7	louvre vents	764	3000		operable	5000
V8	louvre vents	764	3000		operable	5000
V9	louvre vents	764	3000		fixed	500
V10	louvre vents	764	3000		fixed	500
V11	louvre vents	764	3000		fixed	500
V12	louvre vents	764	3000		fixed	500
V13	louvre vents	764	3000		fixed	500
V14	louvre vents	764	3000		fixed	500
V15	louvre vents	764	3000		fixed	500
V16	louvre vents	764	3000		fixed	500
V17	louvre vents	764	3000		fixed	500
V18	louvre vents	970	1640			1130
V20	louvre vents	970	1640			1130
V22	louvre vents	970	1640			1130
V23	louvre vents	970	1640			1000
Grand total: 21						



9 Section A
1 : 200

Door Schedule									
Mark	Description	Height	Width	Finish	Frame Material	Comments	Colour	Door area	
D1	920	2040	920	Colorbond	Steel	Emergency exit door - min. 850 opening with lever action handle	TBC	1.9 m²	
D3	Industrial roller door	4500	3600	Colorbond				16.2 m²	
D4	920	2040	920	Colorbond		Emergency exit door - min. 850 opening with lever action handle		1.9 m²	
D5	920	2040	920	Colorbond		Emergency exit door - min. 850 opening with lever action handle		1.9 m²	
D6	Industrial roller door	4500	3600	Colorbond				16.2 m²	
D8	920	2040	920	Colorbond		Emergency exit door - min. 850 opening with lever action handle		1.9 m²	
D11	920	2040	920	Painted	Timber	Interior		1.9 m²	
D12	920	2040	920	Painted	Timber	Interior		1.9 m²	
D13	820	2040	820	Painted	Timber	Interior		1.7 m²	
D14	920	2040	920					1.9 m²	
D17	820	2040	820					1.7 m²	
Grand total: 11									