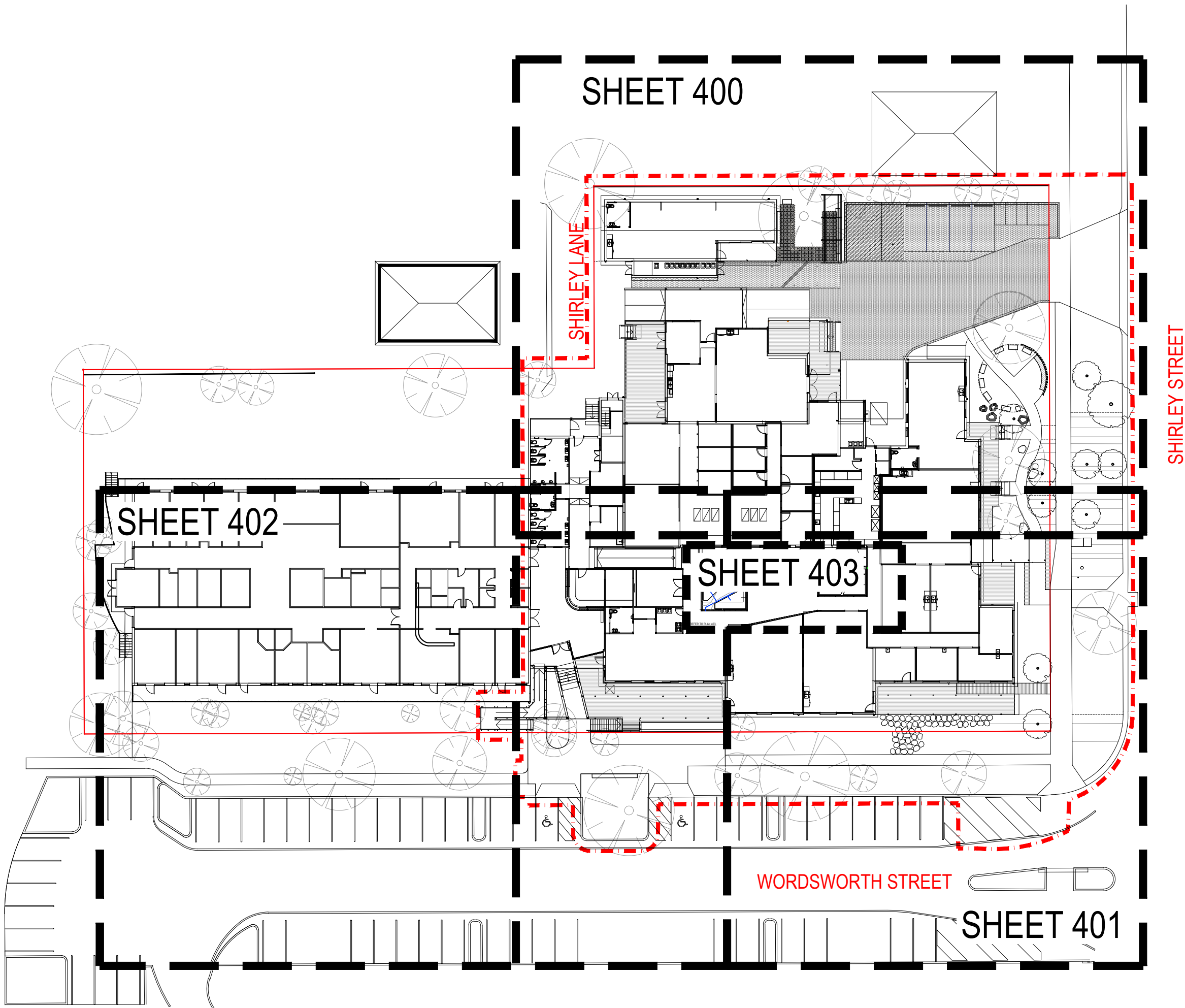


# OLD BYRON HOSPITAL

## LANDSCAPE WORKS DOCUMENT

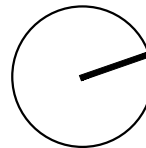


LANDSCAPE DRAWING LIST		
DRAWING No.	REV	TITLE
230 - 000	B	COVER SHEET AND DRAWING LIST
230 - 400	B	HARDWORKS PLAN
230 - 401	B	HARDWORKS PLAN
230 - 402	B	HARDWORKS PLAN
230 - 403	A	HARDWORKS PLAN
230 - 500	B	SOFTWARES PLAN
230 - 501	B	SOFTWARES PLAN
230 - 502	B	SOFTWARES PLAN
230 - 503	A	SOFTWARES PLAN
230 - 900	B	CONSTRUCTION DETAILS
230 - 901	B	CONSTRUCTION DETAILS
230 - 902	B	CONSTRUCTION DETAILS
230 - 903	B	CONSTRUCTION DETAILS
230 - 904	B	CONSTRUCTION DETAILS

NOT FOR CONSTRUCTION

SET OUT TO BE COMPLETED BY SURVEYOR AND CONFIRMED WITH PROJECT MANAGER PRIOR TO CONTINUING CONSTRUCTION WORKS

Revision	Description	Date	Initial
B	FOR APPROVAL	20.01.23	OM
A	PRELIMINARY - FOR REVIEW	21.12.22	OM



@ A1

PLUMMER & SMITH

landscape architecture / art / design

abn: 17 634 944 737 m 0437 599 011  
po box 204 e dan@plummerandsmith.com.au  
murwillumbah NSW 2484 w plumberandsmith.com.au  
© Copyright

BYRON SHIRE COUNCIL

OLD BYRON HOSPITAL

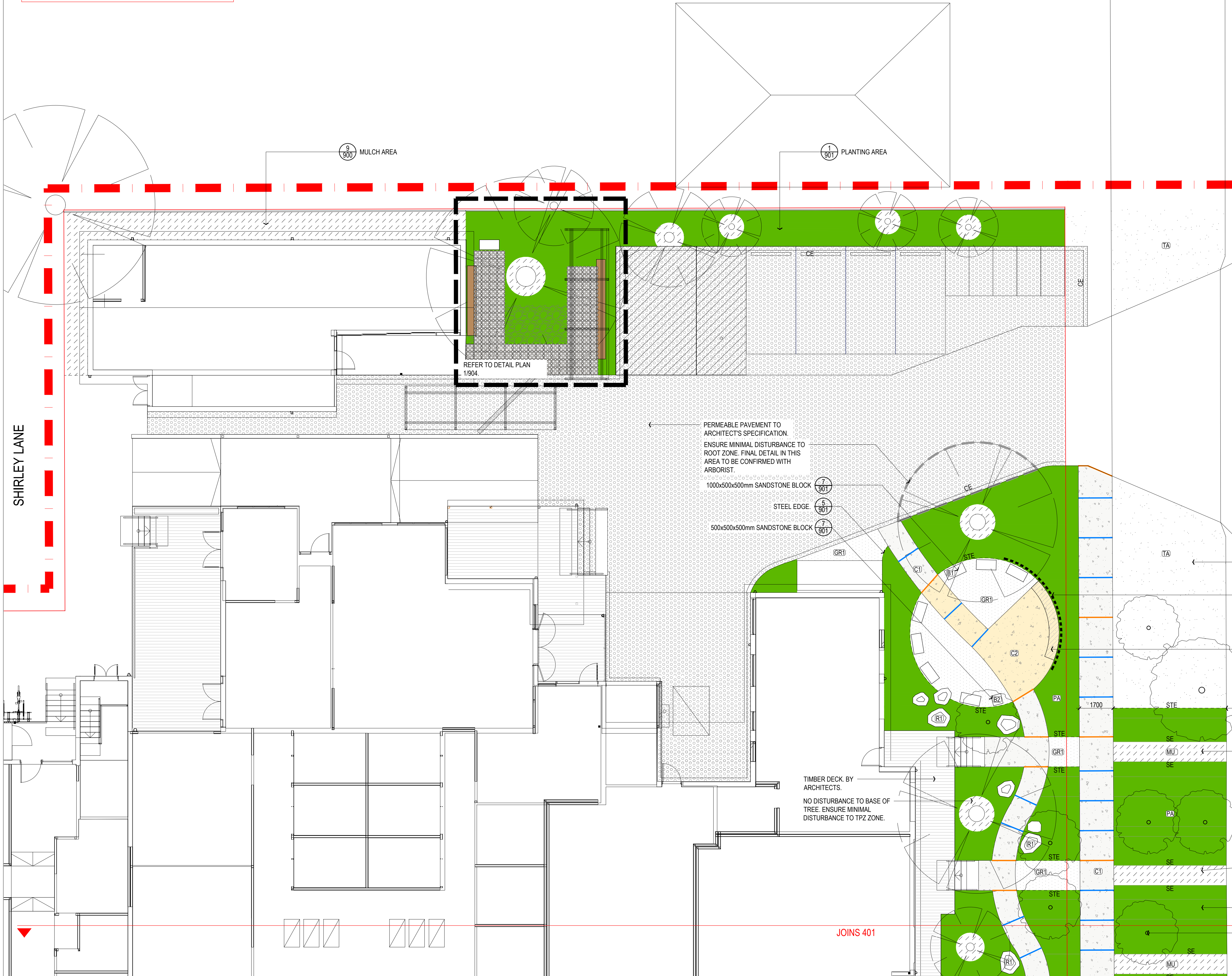
COVER PAGE

Designed	DP	Drawn	OM
Checked	DP	Approved	
Date	21.12.22	Scale	
Job No.	230	Drawing No.	000
		Revision	B



NOTE  
- TREE PROTECTION ZONE. NO VEHICULAR OR PEDESTRIAN ACCESS, TRENCHING OR SOIL EXCAVATION IS TO OCCUR WITHIN THE TREE PROTECTION ZONE; NO STORAGE OR DUMPING OF TOOLS, EQUIPMENT, OR WASTE IS TO OCCUR WITHIN THE TREE PROTECTION ZONE.

SHIRLEY LANE



- KEY
- |     |   |
|-----|---|
| 1   | EXTENT OF WORKS                                 |
| C1  | CONCRETE TYPE 1                                 |
| C2  | CONCRETE TYPE 2                                 |
| GR1 | COMPRESSED GRAVEL                               |
| GR2 | LOOSE GRAVEL (SMALLER)                          |
| GR3 | LOOSE GRAVEL (GRAVEL MULCH) AND PLANTING        |
| GR4 | LOOSE GRAVEL (LARGER)                           |
| ST1 | STEPPER IN PLANTING                             |
| 10  | GRID PAVE PAVES. REFER TO DETAIL PLAN 904.      |
| 3   | PERMEABLE PAVEMENT. REFER TO ARCHITECT'S DETAIL |
| RT1 | PLACED FLAT TOP BASALT BOULDER                  |
| B1  | SANDSTONE BLOCK 1000x500x500mm                  |
| B2  | SANDSTONE BLOCK 500x500x500mm                   |
|     | TIMBER DECK BY OTHERS                           |
| 1   | TIMBER BATTEN SEAT                              |
| STE | STEEL EDGE                                      |
| SE  | SPADE CUT EDGE                                  |
| CE  | CONCRETE EDGE TO DRIVEWAY PAVEMENT              |
| PA  | PLANTING AREA. REFER TO SOFTWARES PLAN          |
| PA2 | RAISED PLANTING AREA. REFER TO SOFTWARES PLAN   |
| MU  | MULCH AREA                                      |
| TA  | TURF AREA                                       |
| 1-4 | BRIDGE TIMBER SEAT                              |
| 2-3 | RAISED PLANTER BED                              |
| 7-8 | TREE PLANTING                                   |
|     | EXISTING TREE TO REMAIN                         |
| 2   | CONTROL JOINT                                   |
| 3   | EXPANSION JOINT                                 |

NOT FOR CONSTRUCTION  
SET OUT TO BE COMPLETED BY SURVEYOR AND CONFIRMED WITH PROJECT MANAGER PRIOR TO CONTINUING CONSTRUCTION WORKS

Revision	Description	Date	Initial
B	FOR APPROVAL	20.01.23	OM
A	PRELIMINARY - FOR REVIEW	21.12.22	OM



PLUMMER & SMITH  
landscape architecture / art / design  
abn: 17 634 944 737  
po box 204  
murwillumbah NSW 2484  
© Copyright

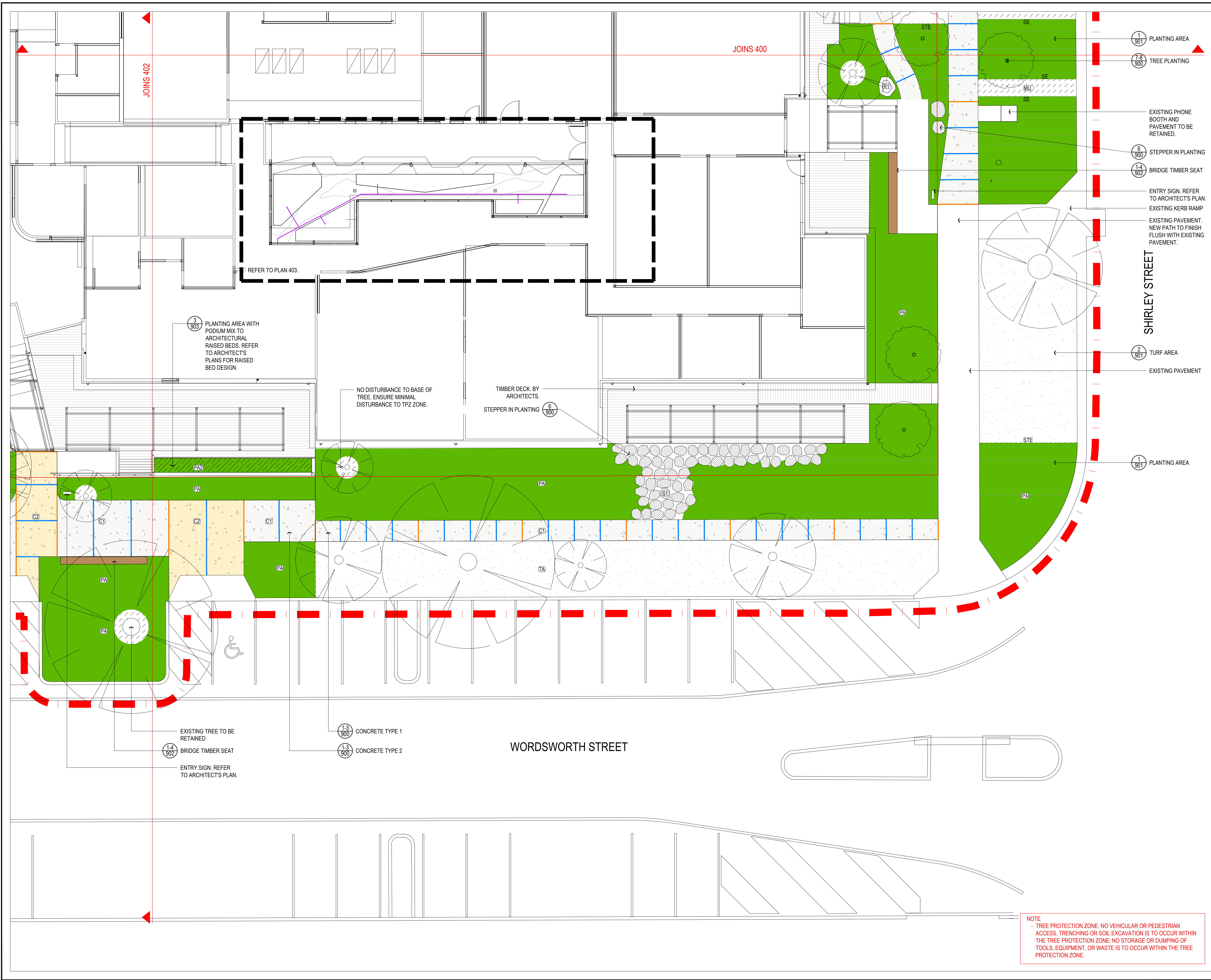
BYRON SHIRE COUNCIL

OLD BYRON HOSPITAL

HARDWORKS PLAN

Designed	DP	Drawn	OM
Checked	DP	Approved	
Date	21.12.22	Scale	
Job No.	230	Drawing No.	400
		Revision	B





- KEY
- |         |   |
|---------|---|
| 1-3 300 | CONCRETE TYPE 1                                 |
| 1-3 300 | CONCRETE TYPE 2                                 |
| 4 300   | COMPRESSED GRAVEL                               |
| 5 300   | LOOSE GRAVEL (SMALLER)                          |
| 1 301   | LOOSE GRAVEL (GRAVEL MULCH) AND PLANTING        |
| 5 300   | LOOSE GRAVEL (LARGER)                           |
| 6 300   | STEPPER IN PLANTING                             |
| 10 300  | GRID PAVE PAV. REFER TO DETAIL PLAN 904.        |
| 3 301   | PERMEABLE PAVEMENT. REFER TO ARCHITECT'S DETAIL |
| 6 301   | PLACED FLAT TOP BASALT BOULDER                  |
| 7 301   | SANDSTONE BLOCK 1000x500x500mm                  |
| 7 301   | SANDSTONE BLOCK 500x500x500mm                   |
| 1 303   | TIMBER BATTEN SEAT                              |
| 5 301   | STEEL EDGE                                      |
| 4 301   | SPADE CUT EDGE                                  |
| 3 301   | CONCRETE EDGE TO DRIVEWAY PAVEMENT              |
| 1 301   | PLANTING AREA. REFER TO SOFTWORKS PLAN          |
| 2 303   | RAISED PLANTING AREA. REFER TO SOFTWORKS PLAN   |
| 9 300   | MULCH AREA                                      |
| 2 301   | TURF AREA                                       |
| 1-4 302 | BRIDGE TIMBER SEAT                              |
| 2-3 303 | RAISED PLANTER BED                              |
| 7-8 300 | TREE PLANTING                                   |
| 1 301   | EXISTING TREE TO REMAIN                         |
| 2 301   | CONTROL JOINT                                   |
| 3 301   | EXPANSION JOINT                                 |

**NOT FOR CONSTRUCTION**

SET OUT TO BE COMPLETED BY SURVEYOR AND CONFIRMED WITH PROJECT MANAGER PRIOR TO CONTINUING CONSTRUCTION WORKS

Revision	Description	Date	Initial
B	FOR APPROVAL	20.01.23	OM
A	PRELIMINARY - FOR REVIEW	21.12.22	OM



**PLUMMER & SMITH**  
landscape architecture / art / design  
abn: 17 634 944 737 m 0437 599 011  
po box 204 e dan@plummerandsmith.com.au  
murwillumbah NSW 2484 w plummerandsmith.com.au  
© Copyright

**BYRON SHIRE COUNCIL**  
**OLD BYRON HOSPITAL**

**HARDWORKS PLAN**

Designed	DP	Drawn	OM
Checked	DP	Approved	
Date	21.12.22	Scale	
Job No.	230	Drawing No.	401
Revision			B



NOTE  
- TREE PROTECTION ZONE. NO VEHICULAR OR PEDESTRIAN ACCESS, TRENCHING OR SOIL EXCAVATION IS TO OCCUR WITHIN THE TREE PROTECTION ZONE; NO STORAGE OR DUMPING OF TOOLS, EQUIPMENT, OR WASTE IS TO OCCUR WITHIN THE TREE PROTECTION ZONE.

PLANTING AREA WITH PODIUM MIX TO ARCHITECTURAL RAISED BEDS. REFER TO ARCHITECT'S PLANS FOR RAISED BED DESIGN.

RAMP ACCESS - REFER TO ARCHITECT'S PLAN.

JOINS 401

REFER TO PLAN 503.

PLANTING AREA WITH PODIUM MIX TO ARCHITECTURAL RAISED BEDS. REFER TO ARCHITECT'S PLANS FOR RAISED BED DESIGN.

EXISTING TREE TO BE RETAINED

BRIDGE TIMBER SEAT

ENTRY SIGN. REFER TO ARCHITECT'S PLAN.

- KEY
- EXTENT OF WORKS
  - CONCRETE TYPE 1
  - CONCRETE TYPE 2
  - COMPRESSED GRAVEL
  - LOOSE GRAVEL (SMALLER)
  - LOOSE GRAVEL (GRAVEL MULCH) AND PLANTING
  - LOOSE GRAVEL (LARGER)
  - STEPPER IN PLANTING
  - GRID PAVE PAVER. REFER TO DETAIL PLAN 904.
  - PERMEABLE PAVEMENT. REFER TO ARCHITECT'S DETAIL
  - PLACED FLAT TOP BASALT BOULDER
  - SANDSTONE BLOCK 1000x500x500mm
  - SANDSTONE BLOCK 500x500x500mm
  - TIMBER DECK BY OTHERS
  - TIMBER BATTEN SEAT
  - STEEL EDGE
  - SPADE CUT EDGE
  - CONCRETE EDGE TO DRIVEWAY PAVEMENT
  - PLANTING AREA. REFER TO SOFTWORKS PLAN
  - RAISED PLANTING AREA. REFER TO SOFTWORKS PLAN
  - MULCH AREA
  - TURF AREA
  - BRIDGE TIMBER SEAT
  - RAISED PLANTER BED
  - TREE PLANTING
  - EXISTING TREE TO REMAIN
  - CONTROL JOINT
  - EXPANSION JOINT

NOT FOR CONSTRUCTION

SET OUT TO BE COMPLETED BY SURVEYOR AND CONFIRMED WITH PROJECT MANAGER PRIOR TO CONTINUING CONSTRUCTION WORKS

Revision	Description	Date	Initial
B	FOR APPROVAL	20.01.23	OM
A	PRELIMINARY - FOR REVIEW	21.12.22	OM



PLUMMER & SMITH

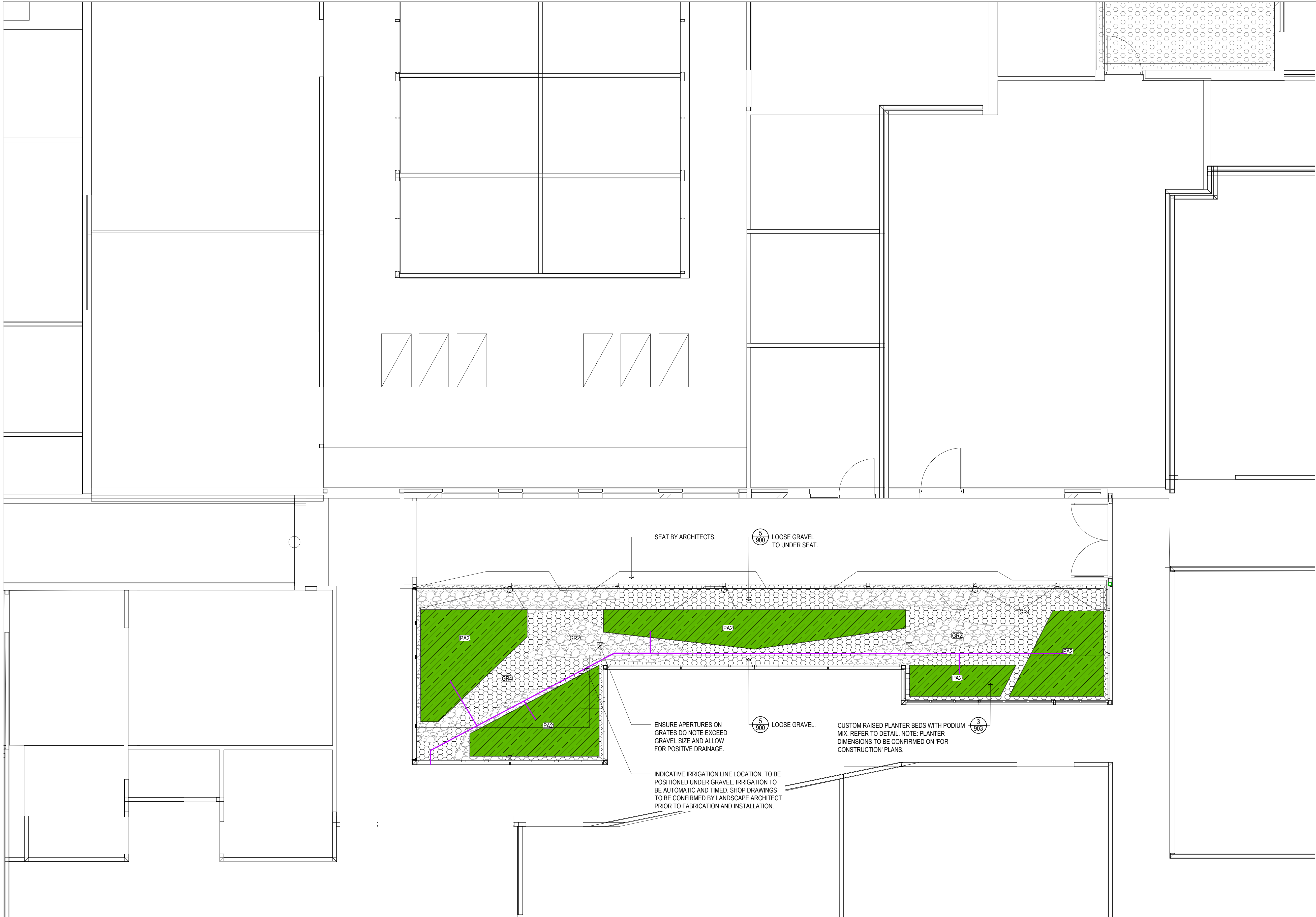
landscape architecture / art / design  
abn: 17 634 944 737 m 0437 599 011  
po box 204 e dan@plummerandsmith.com.au  
murwillumbah NSW 2484 w plummerandsmith.com.au  
© Copyright

BYRON SHIRE COUNCIL

OLD BYRON HOSPITAL

HARDWORKS PLAN

Designed	DP	Drawn	OM
Checked	DP	Approved	
Date	21.12.22	Scale	
Job No.	230	Drawing No.	402
		Revision	B



KEY

GR2

5

900

GR4

5

900

PA2

2-3

900

INDICATIVE  
IRRIGATION LINE

LOOSE GRAVEL (SMALLER)

LOOSE GRAVEL (LARGER)

RAISED PLANTER BED

**NOT FOR CONSTRUCTION**

SET OUT TO BE COMPLETED BY SURVEYOR AND CONFIRMED WITH PROJECT MANAGER PRIOR TO CONTINUING CONSTRUCTION WORKS

Revision	Description	Date	Initial
A	FOR APPROVAL	20.01.23	OM

**PLUMMER & SMITH**  
landscape architecture / art / design  
abn: 17 634 944 737 m 0437 599 011  
po box 204 e dan@plummerandsmith.com.au  
murwillumbah NSW 2484 w plummerandsmith.com.au  
© Copyright

BYRON SHIRE COUNCIL

OLD BYRON HOSPITAL

HARDWORKS PLAN

Designed	DP	Drawn	OM
Checked	DP	Approved	
Date	20.01.23	Scale	
Job No.	230	Drawing No.	403
		Revision	A

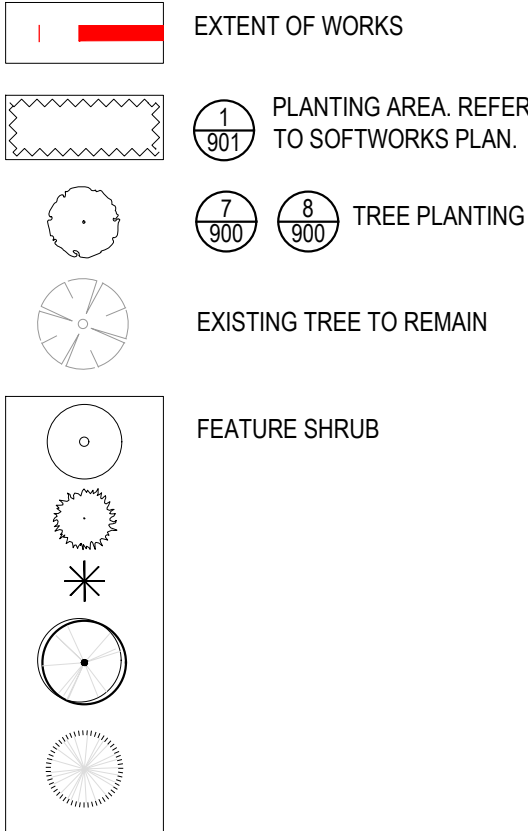
230-400.dwg © Plummer & Smith ABN 17 634 944 737



SHIRLEY LANE

SHIRLEY STREET

KEY

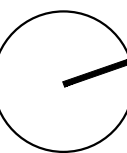


NOTE: IN PLANTING MIX AREAS, PLANT SAME SPECIES IN GROUPS OF 5-7.

NOT FOR CONSTRUCTION

SET OUT TO BE COMPLETED BY SURVEYOR AND CONFIRMED WITH PROJECT MANAGER PRIOR TO CONTINUING CONSTRUCTION WORKS

Revision	Description	Date	Initial
B	FOR APPROVAL	20.01.23	OM
A	PRELIMINARY - FOR REVIEW	21.12.22	OM



0 1 2 4  
1:100 @ A1

PLUMMER & SMITH

landscape architecture / art / design

abn: 17 634 944 737 m 0437 599 011  
po box 204 e dan@plummerandsmith.com.au  
murwillumbah NSW 2484 w plummerandsmith.com.au  
© Copyright

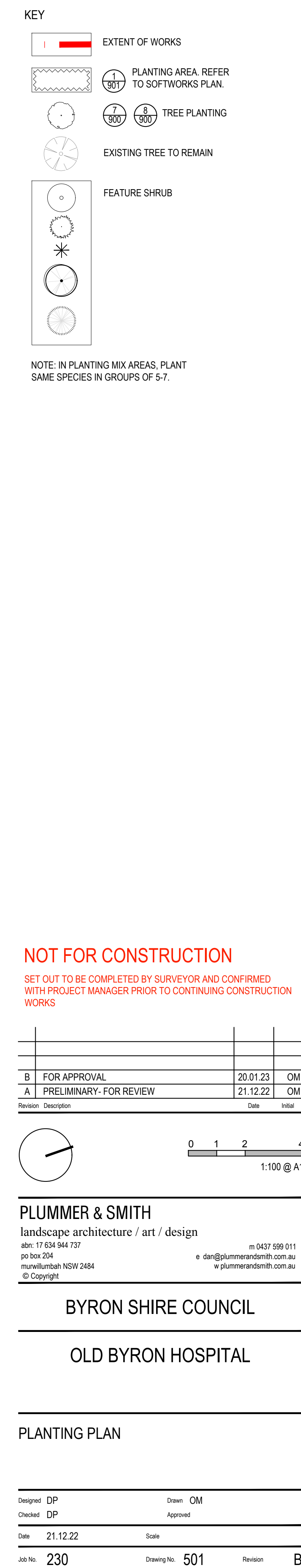
BYRON SHIRE COUNCIL

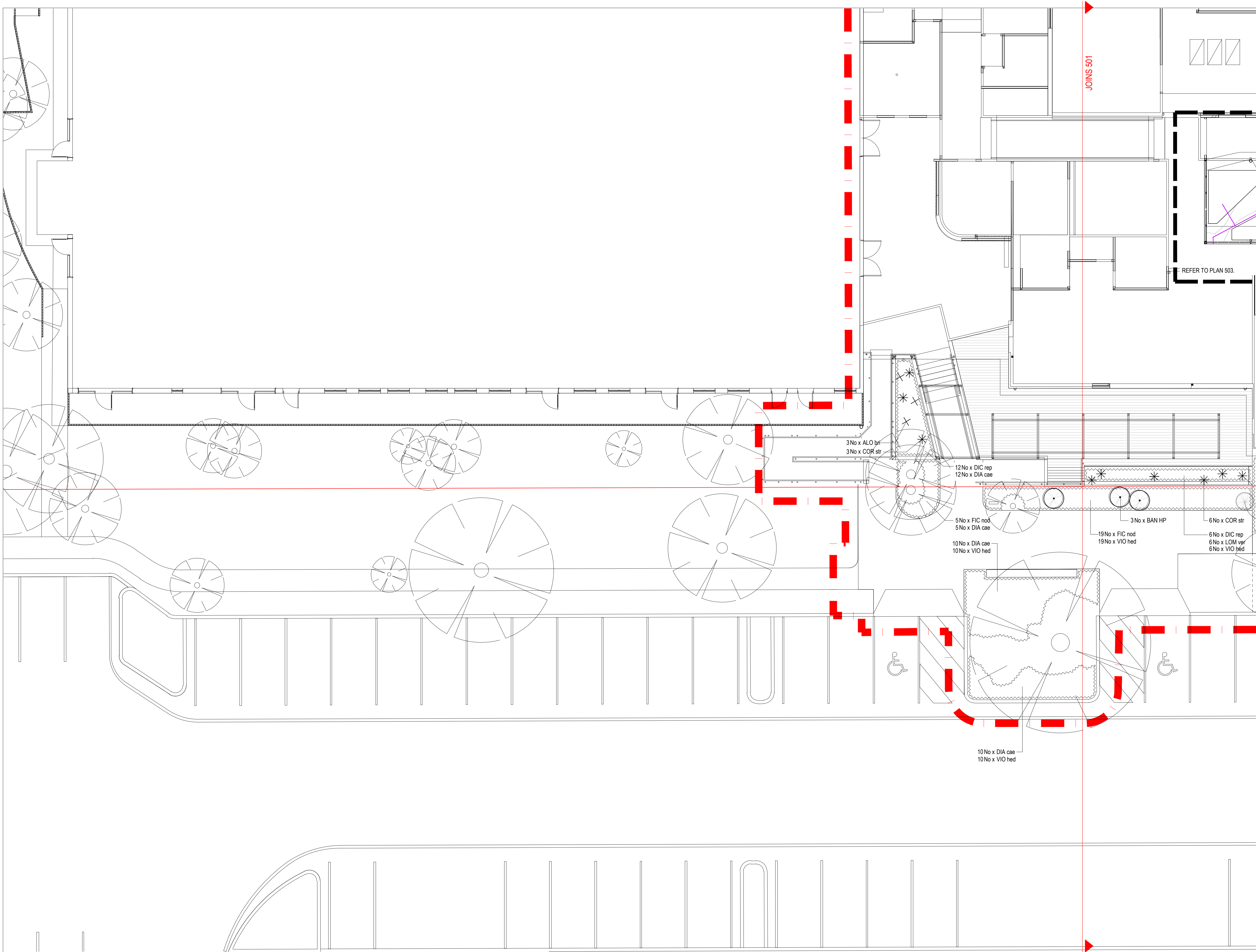
OLD BYRON HOSPITAL

PLANTING PLAN

Designed	DP	Drawn	OM
Checked	DP	Approved	
Date	21.12.22	Scale	
Job No.	230	Drawing No.	500
		Revision	B







**KEY**

- EXTENT OF WORKS
- PLANTING AREA. REFER TO SOFTWARES PLAN.
- TREE PLANTING
- EXISTING TREE TO REMAIN
- FEATURE SHRUB

NOTE: IN PLANTING MIX AREAS, PLANT SAME SPECIES IN GROUPS OF 5-7.

**NOT FOR CONSTRUCTION**  
SET OUT TO BE COMPLETED BY SURVEYOR AND CONFIRMED WITH PROJECT MANAGER PRIOR TO CONTINUING CONSTRUCTION WORKS

Revision	Description	Date	Initial
B	FOR APPROVAL	20.01.23	OM
A	PRELIMINARY- FOR REVIEW	21.12.22	OM



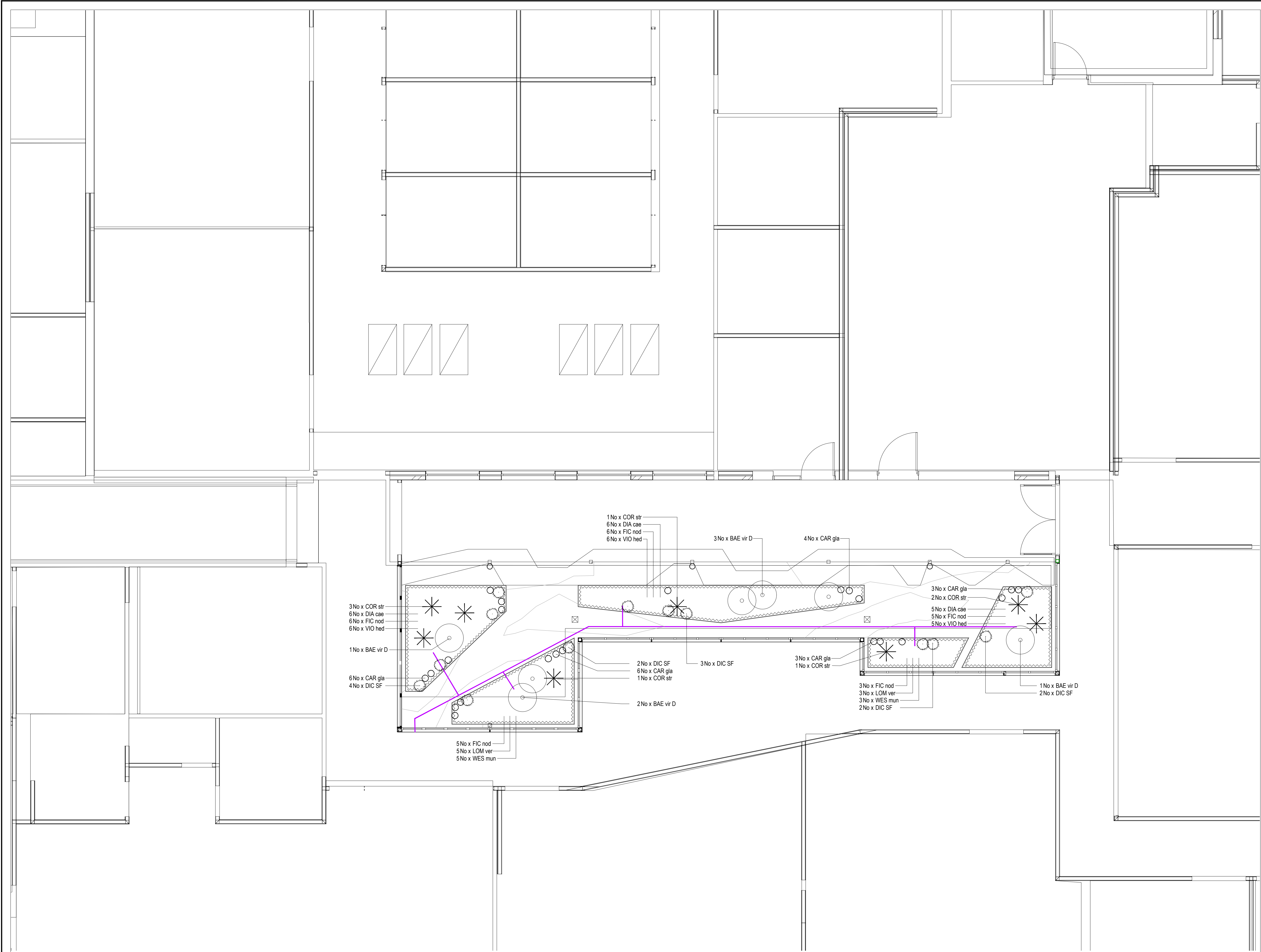
**PLUMMER & SMITH**  
landscape architecture / art / design  
abn: 17 634 944 737 m 0437 599 011  
po box 204 e dan@plummerandsmith.com.au  
murwillumbah NSW 2484 w plummerandsmith.com.au  
© Copyright

**BYRON SHIRE COUNCIL**  
**OLD BYRON HOSPITAL**

**PLANTING PLAN**

Designed	DP	Drawn	OM
Checked	DP	Approved	
Date	21.12.22	Scale	
Job No.	230	Drawing No.	502
		Revision	B





KEY

EXTENT OF WORKS

PLANTING AREA. REFER TO SOFTWARE PLAN.

TREE PLANTING

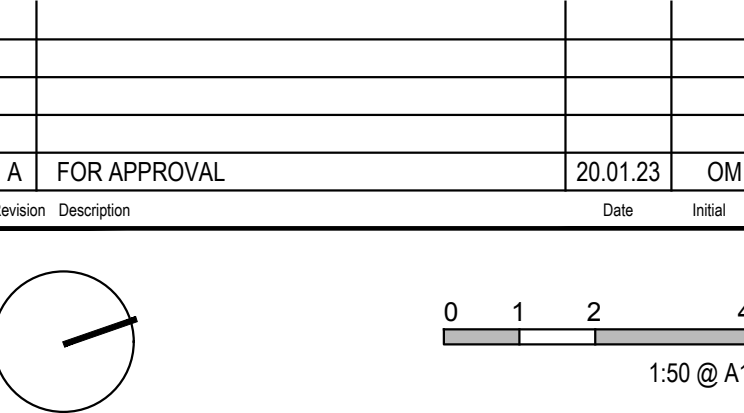
EXISTING TREE TO REMAIN

FEATURE SHRUB

NOTE: IN PLANTING MIX AREAS, PLANT SAME SPECIES IN GROUPS OF 5-7.

NOT FOR CONSTRUCTION

SET OUT TO BE COMPLETED BY SURVEYOR AND CONFIRMED WITH PROJECT MANAGER PRIOR TO CONTINUING CONSTRUCTION WORKS



PLUMMER & SMITH

landscape architecture / art / design

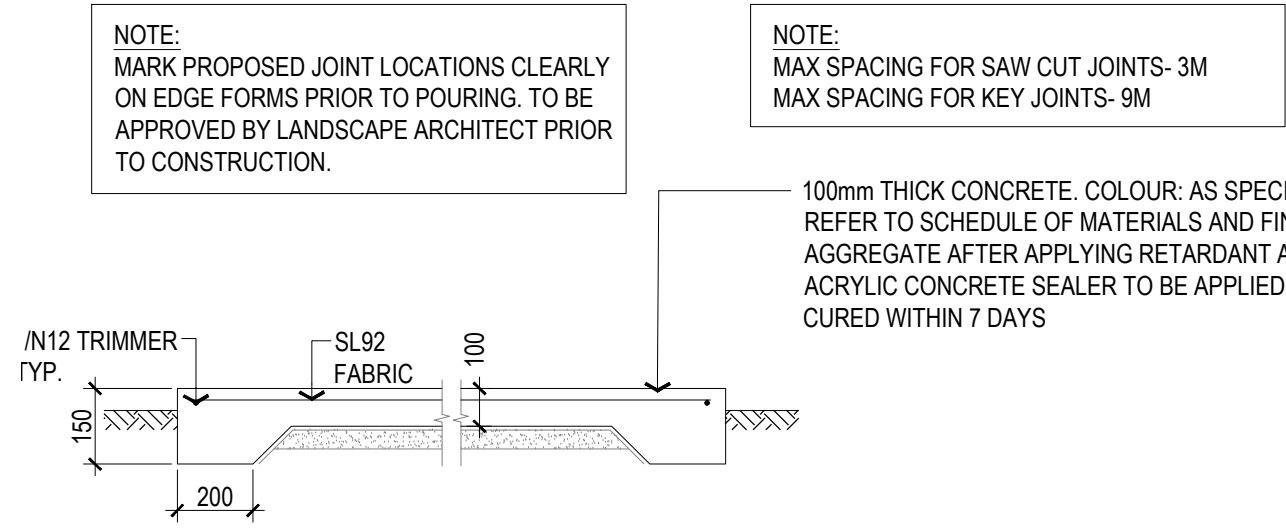
abn: 17 634 944 737 m 0437 599 011  
po box 204 e dan@plummerandsmith.com.au  
murwillumbah NSW 2484 w plummerandsmith.com.au  
© Copyright

BYRON SHIRE COUNCIL

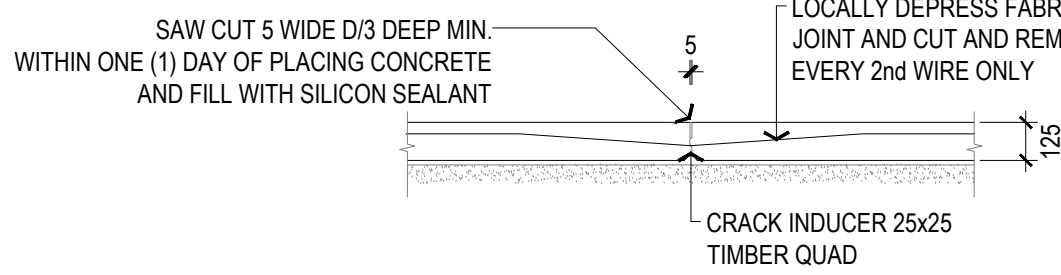
OLD BYRON HOSPITAL

Designed	DP	Drawn	OM
Checked	DP	Approved	
Date	20.01.23	Scale	
Job No.	230	Drawing No.	503
		Revision	A

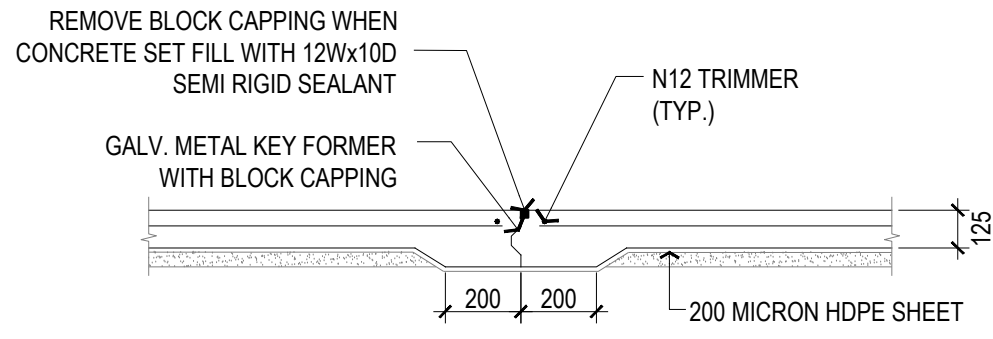




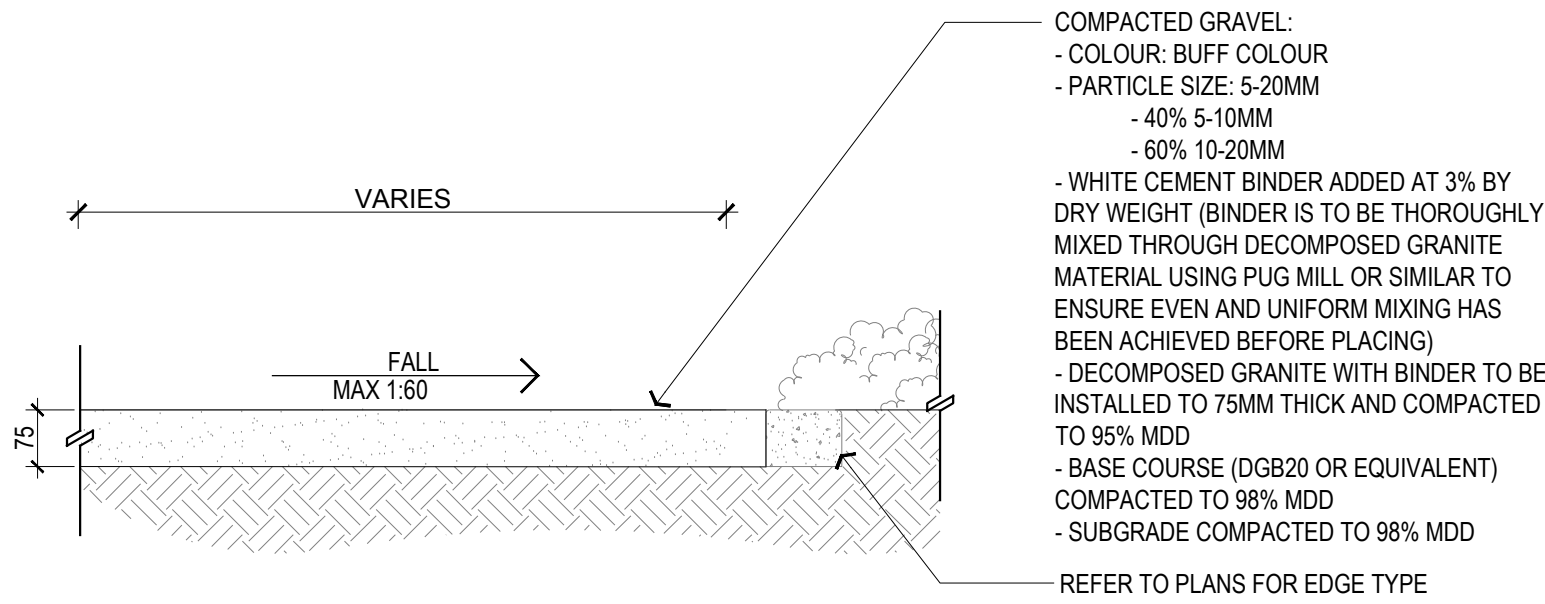
1 125mm THICK REINFORCED CONCRETE HARDSTAND  
900 1:20 @ A1



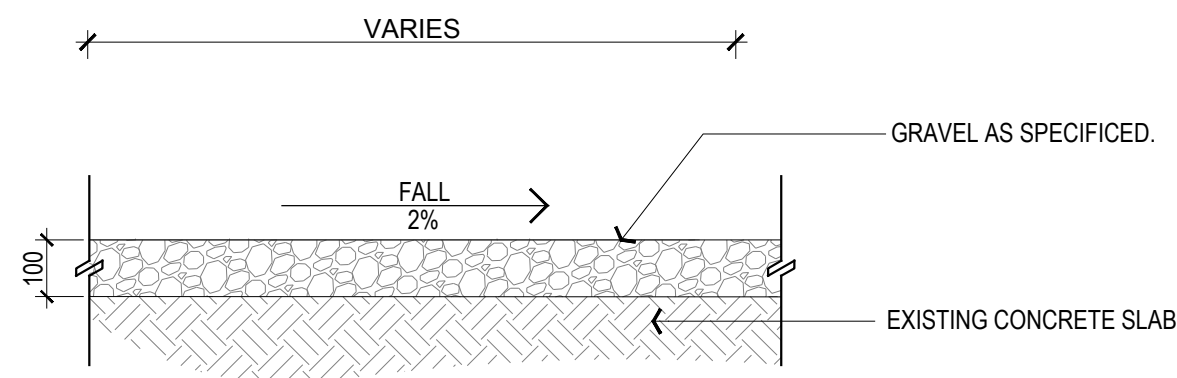
2 TYPICAL SAW CUT JOINT  
900 1:20 @ A1



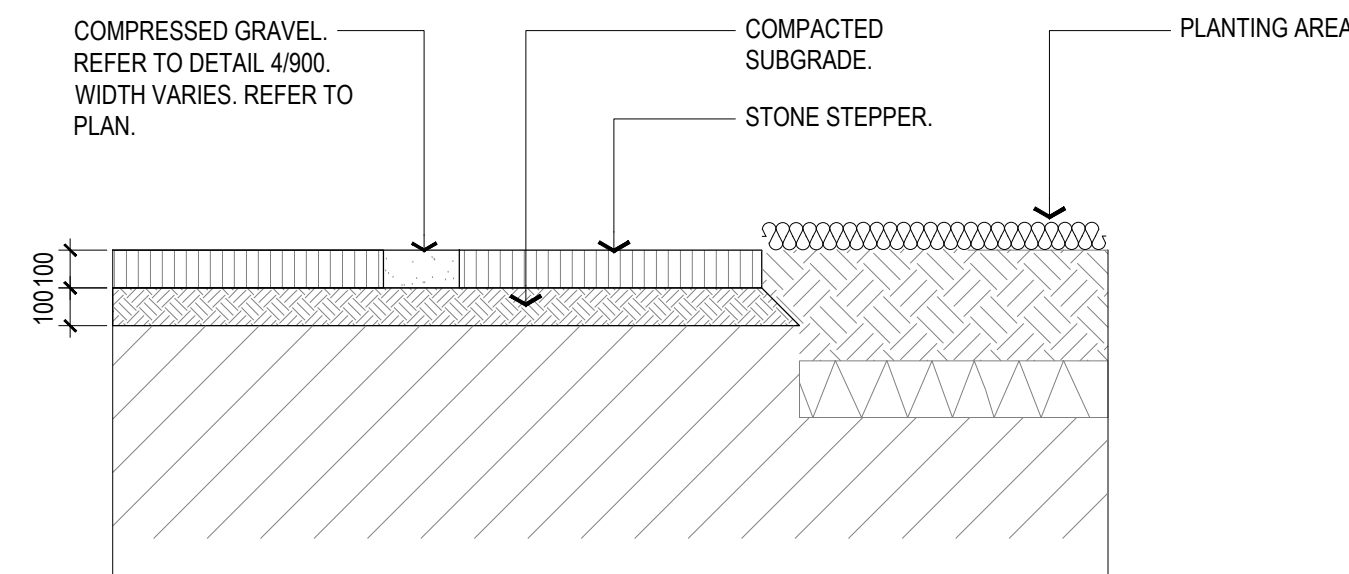
3 TYPICAL KEYED JOINT  
900 1:20 @ A1



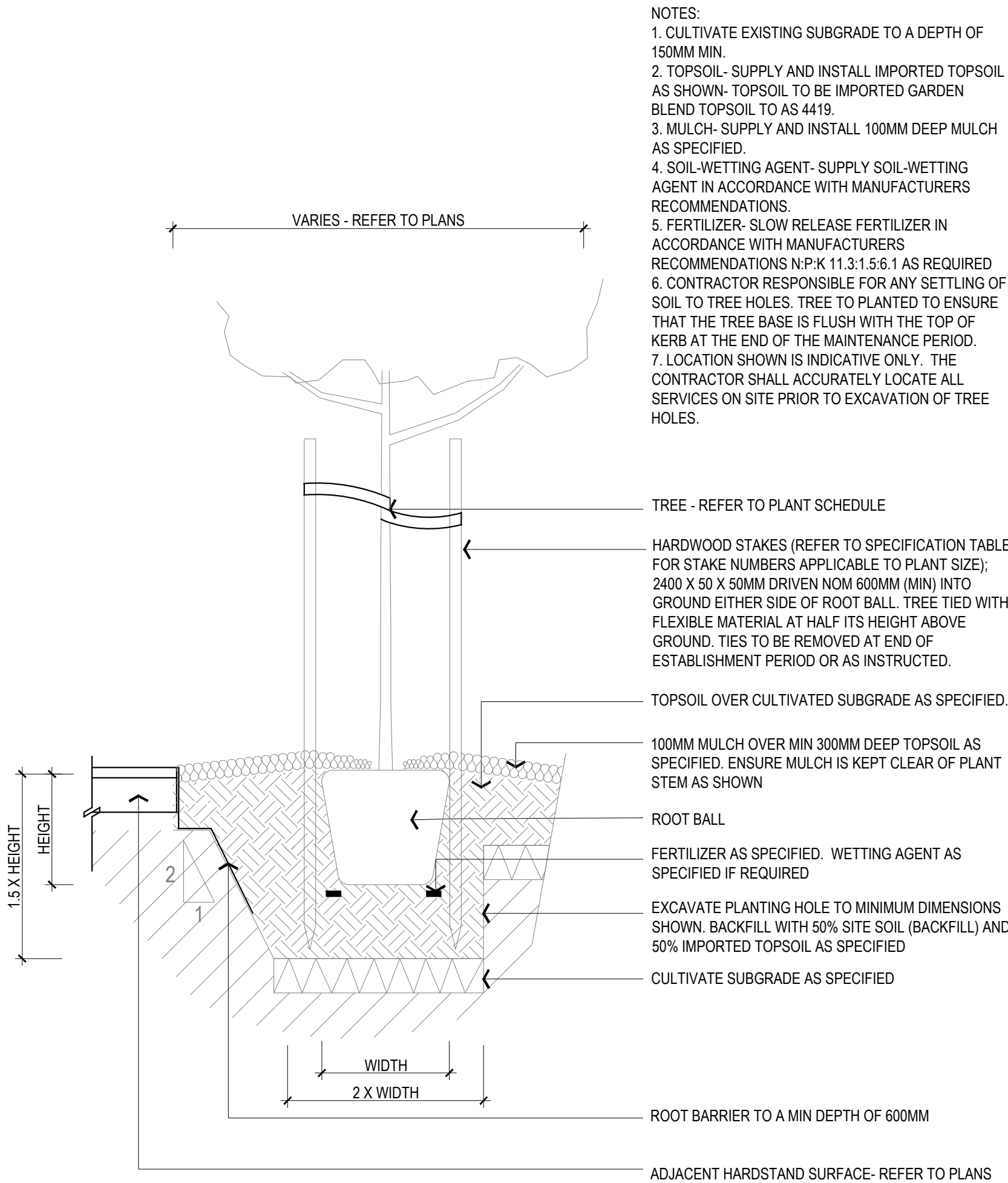
4 COMPRESSED GRAVEL HARDSTAND  
900 1:20 @ A1



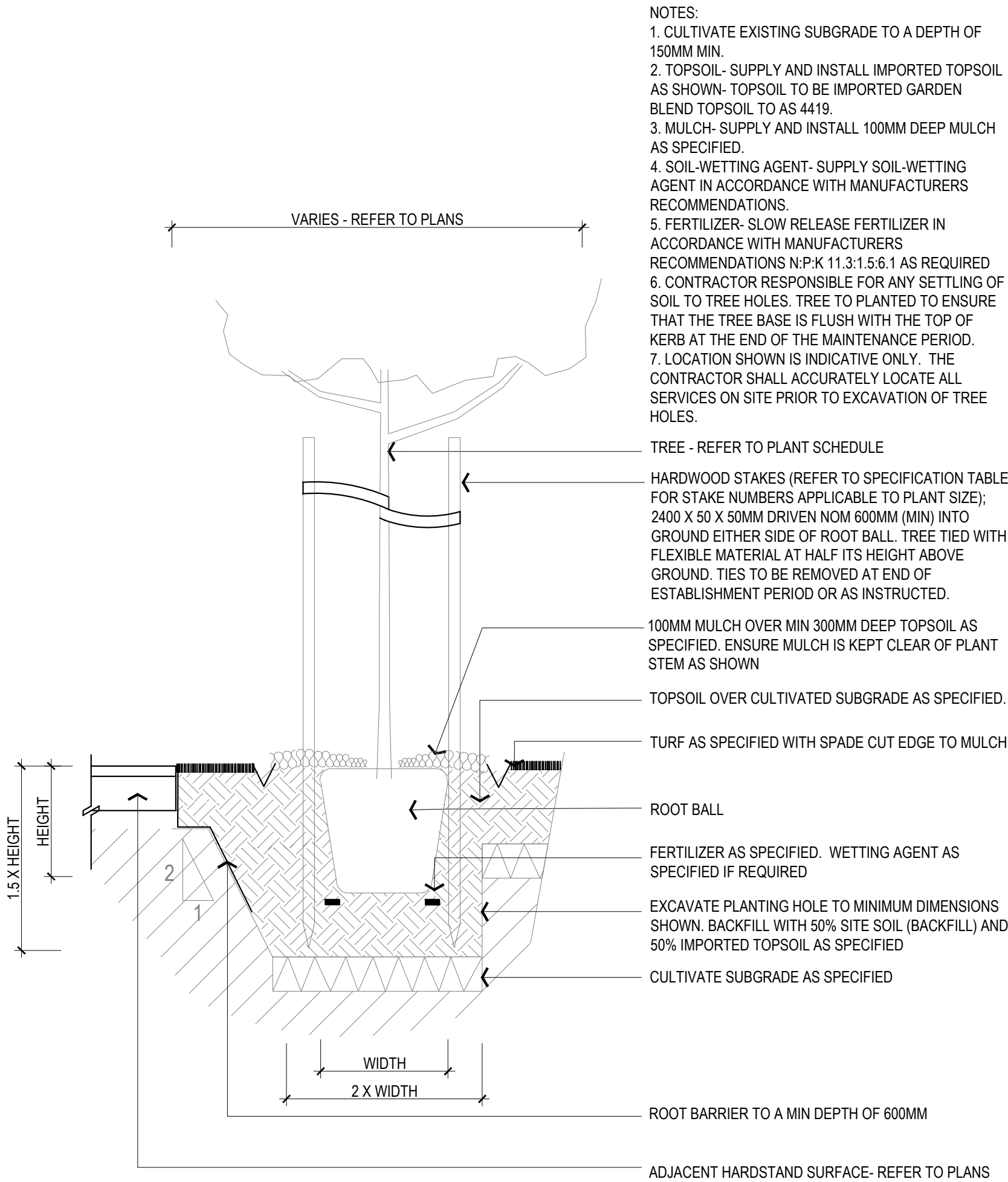
5 LOOSE GRAVEL ON CONCETE SLAB  
900 1:20 @ A1



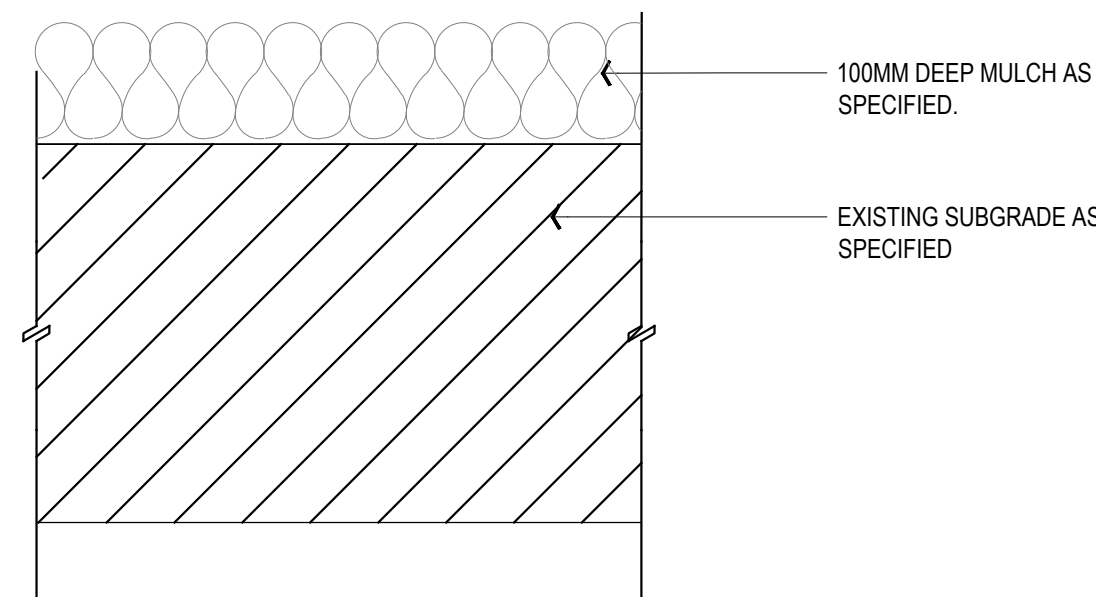
6 STONE STEPPER IN PLANTING  
900 1:20 @ A1



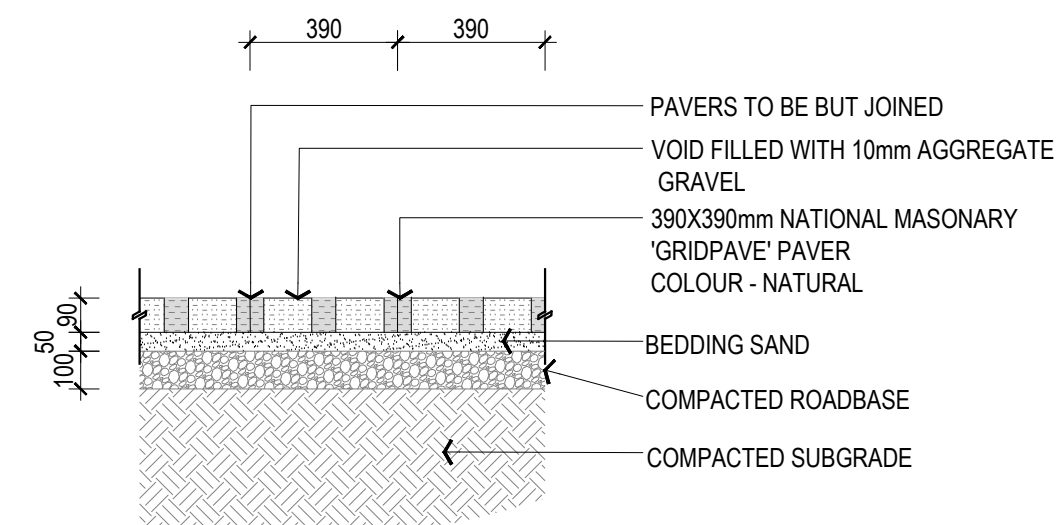
7 TYPICAL TREE PLANTING IN GARDEN - SECTION  
900 1:20 @ A1



8 TYPICAL TREE PLANTING IN TURF - SECTION  
900 1:20 @ A1



9 MULCH AREA  
900 1:5 @ A1



10 GRID PAVE PAVER  
900 1:20 @ A1

NOT FOR CONSTRUCTION

Revision	Description	Date	Initial
B	FOR APPROVAL	20.01.23	OM
A	PRELIMINARY - FOR REVIEW	21.12.22	OM

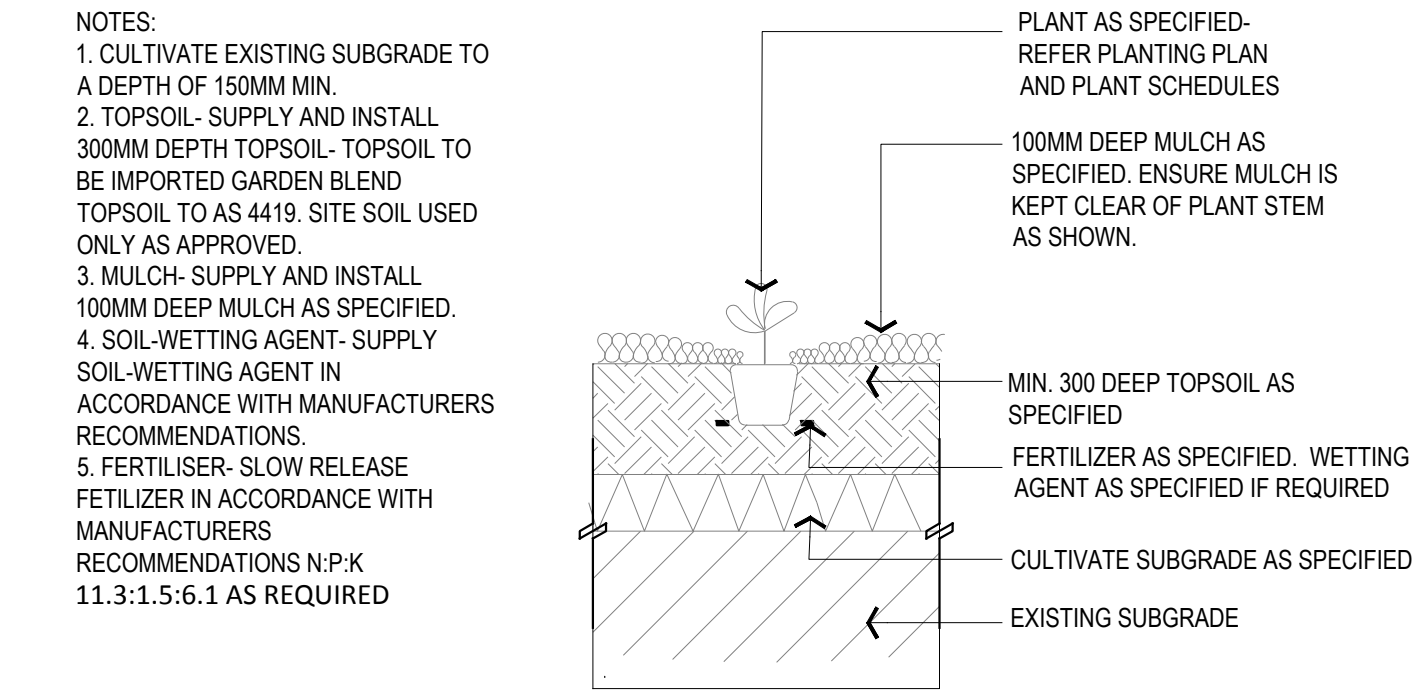
PLUMMER & SMITH  
landscape architecture / art / design  
abn: 17 634 944 737  
po box 204  
murwillumbah NSW 2484  
© Copyright

BYRON SHIRE COUNCIL  
OLD BYRON HOSPITAL

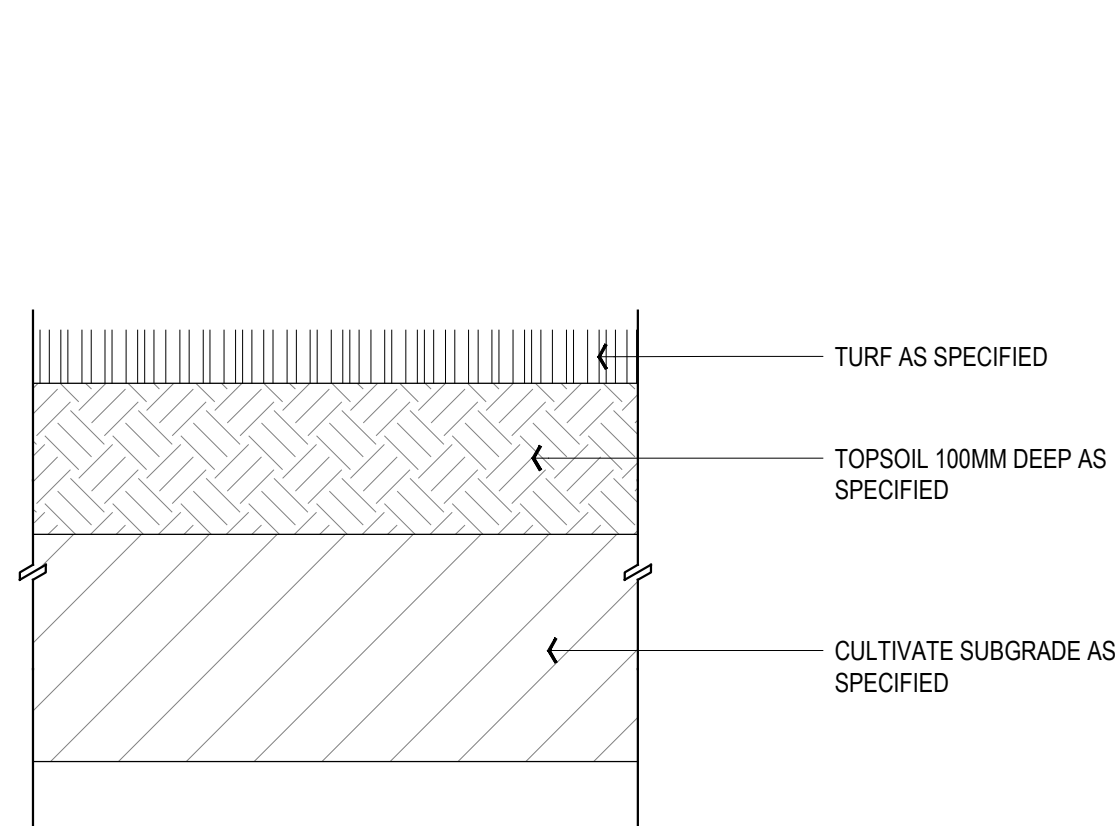
DETAILS

Designed	DP	Drawn	OM
Checked	DP	Approved	
Date	21.12.22	Scale	
Job No.	230	Drawing No.	900
		Revision	B

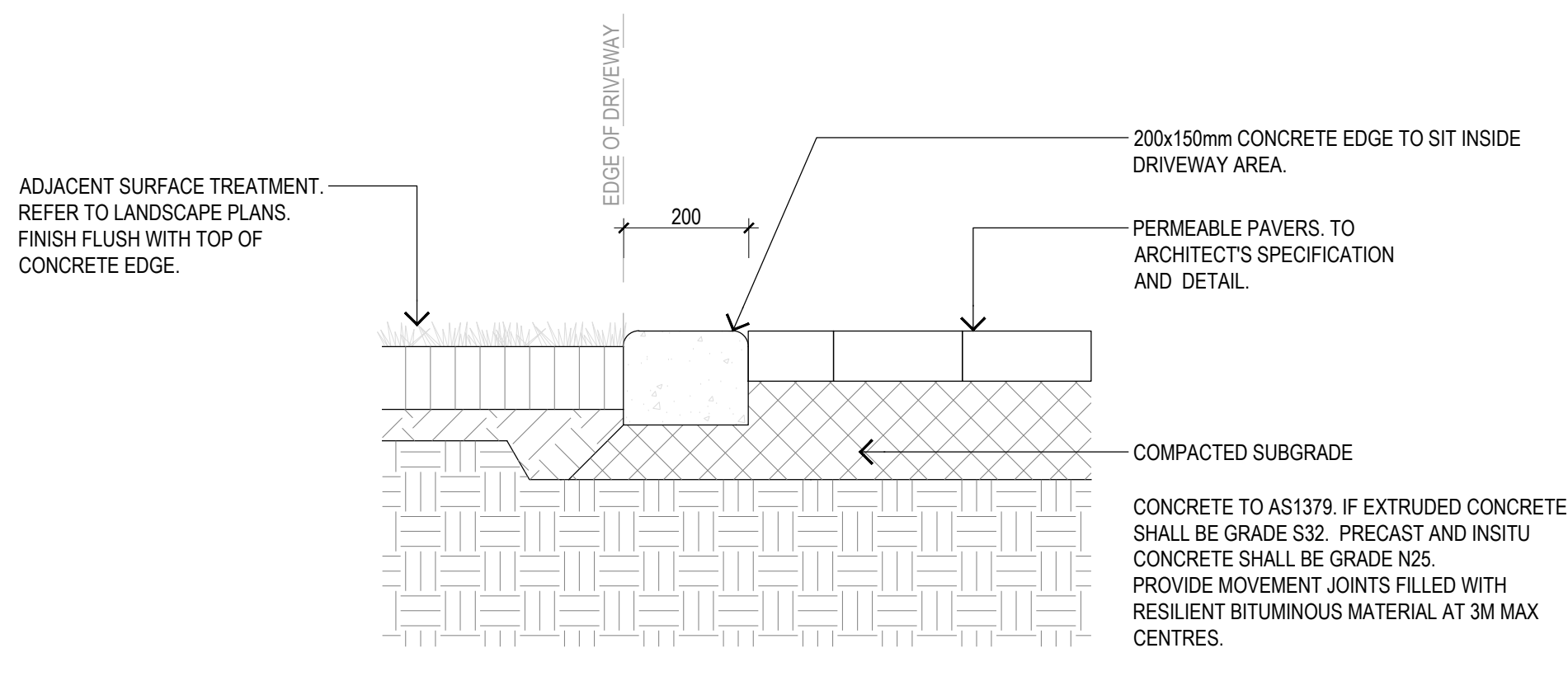




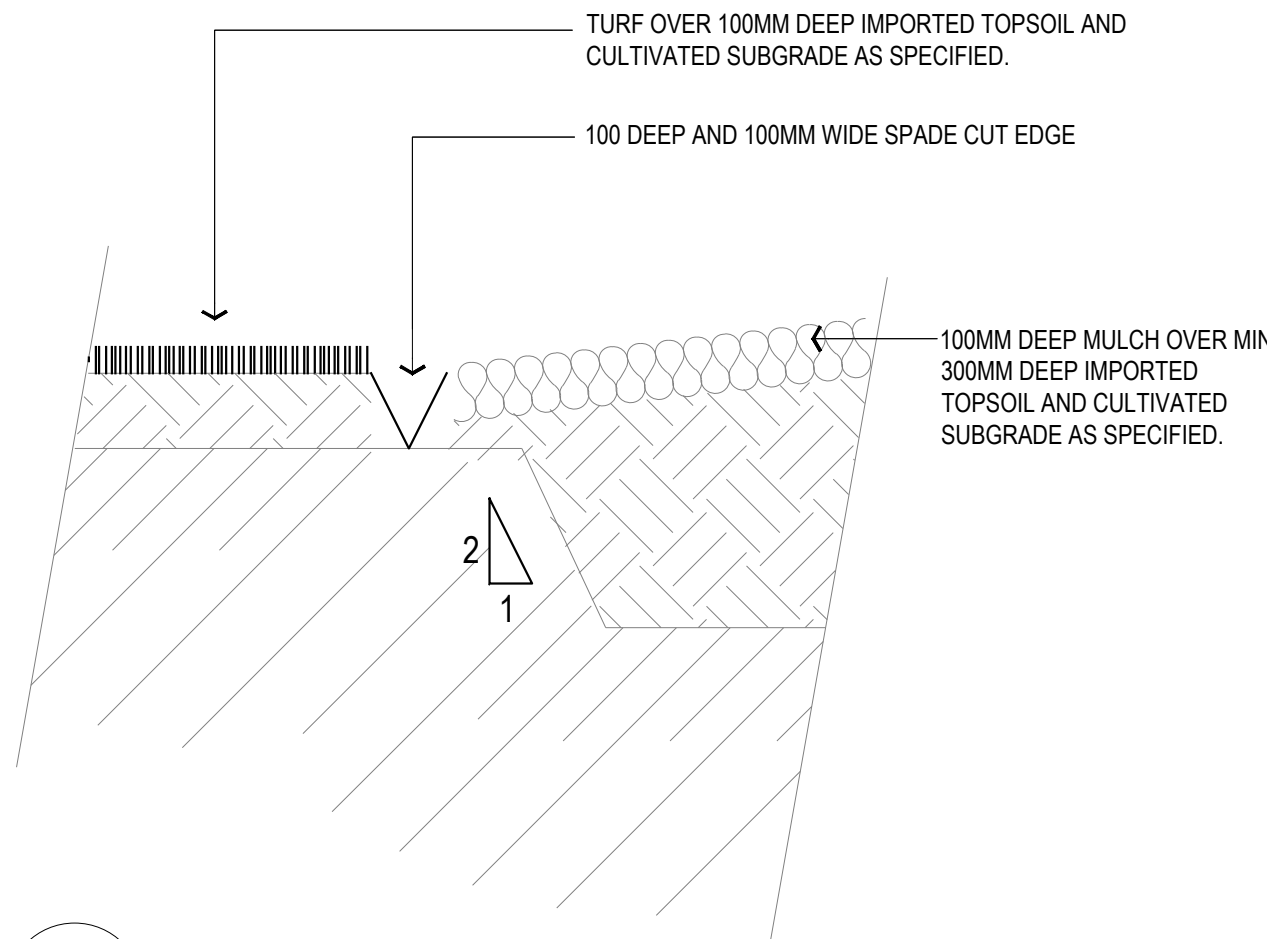
1 TYPICAL PLANTING GROUNDCOVER/ SHRUB - SECTION  
901 1:20 @ A1



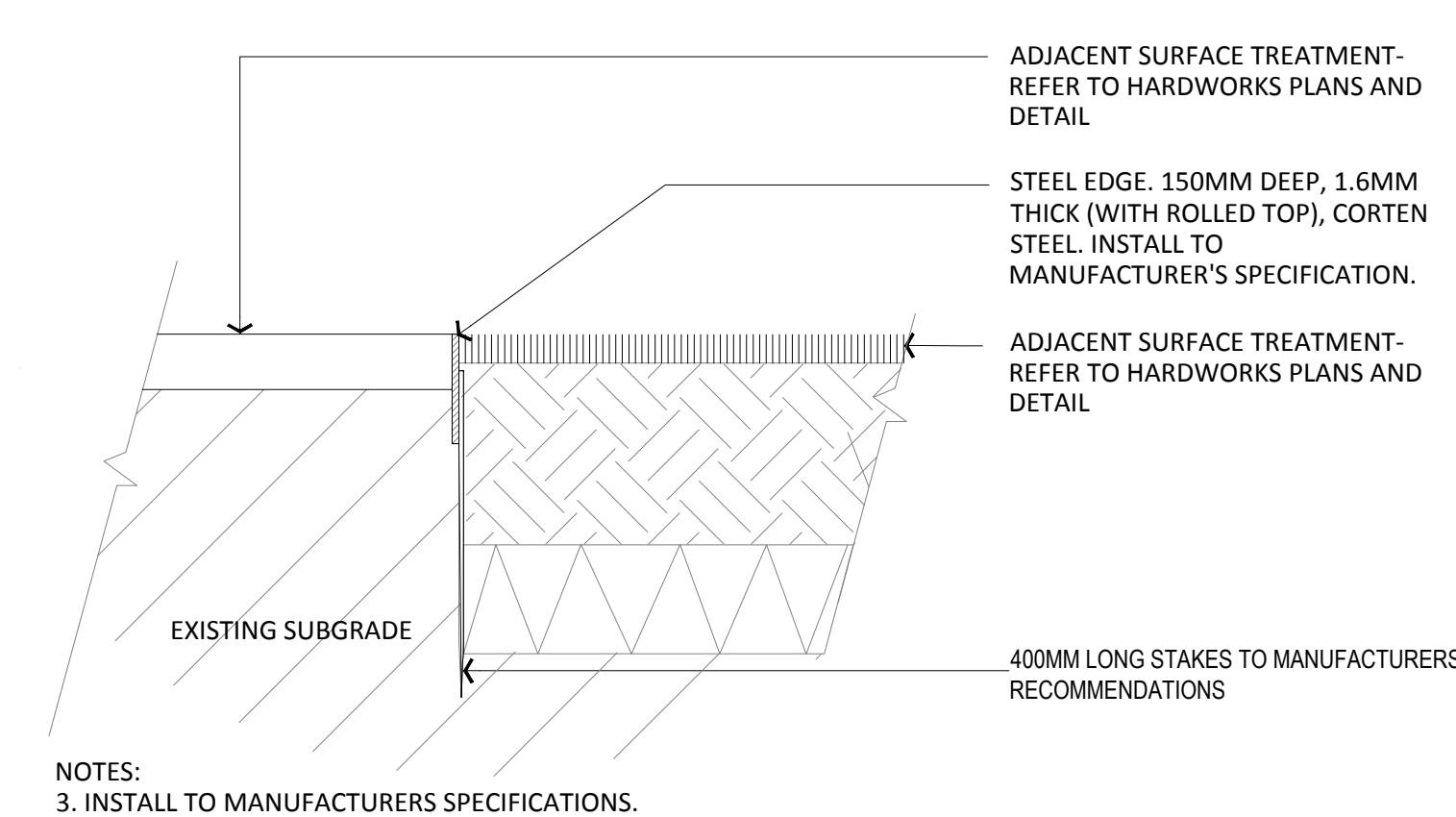
2 TURF - SECTION  
901 1:5 @ A1



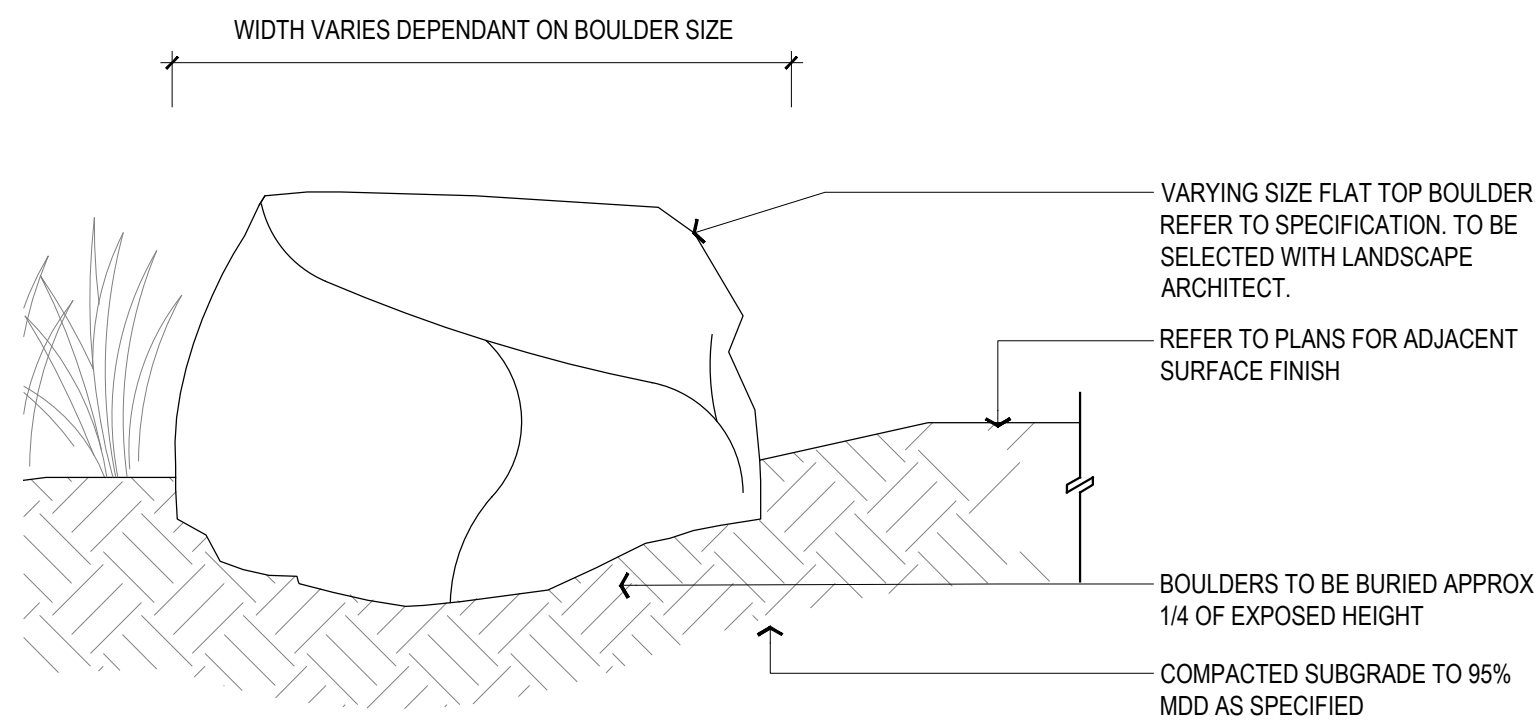
3 CONCRETE EDGE  
901 1:10 @ A1



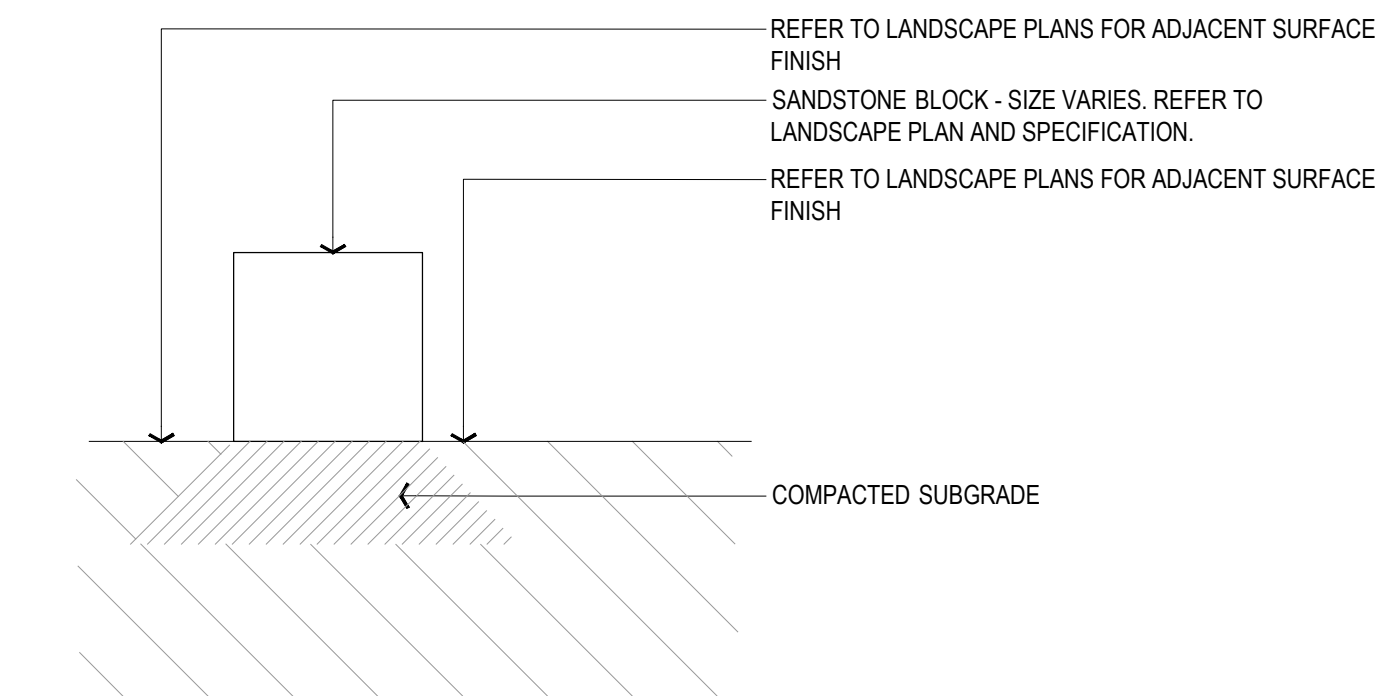
4 SPADE CUT EDGE  
901 1:10 @ A1



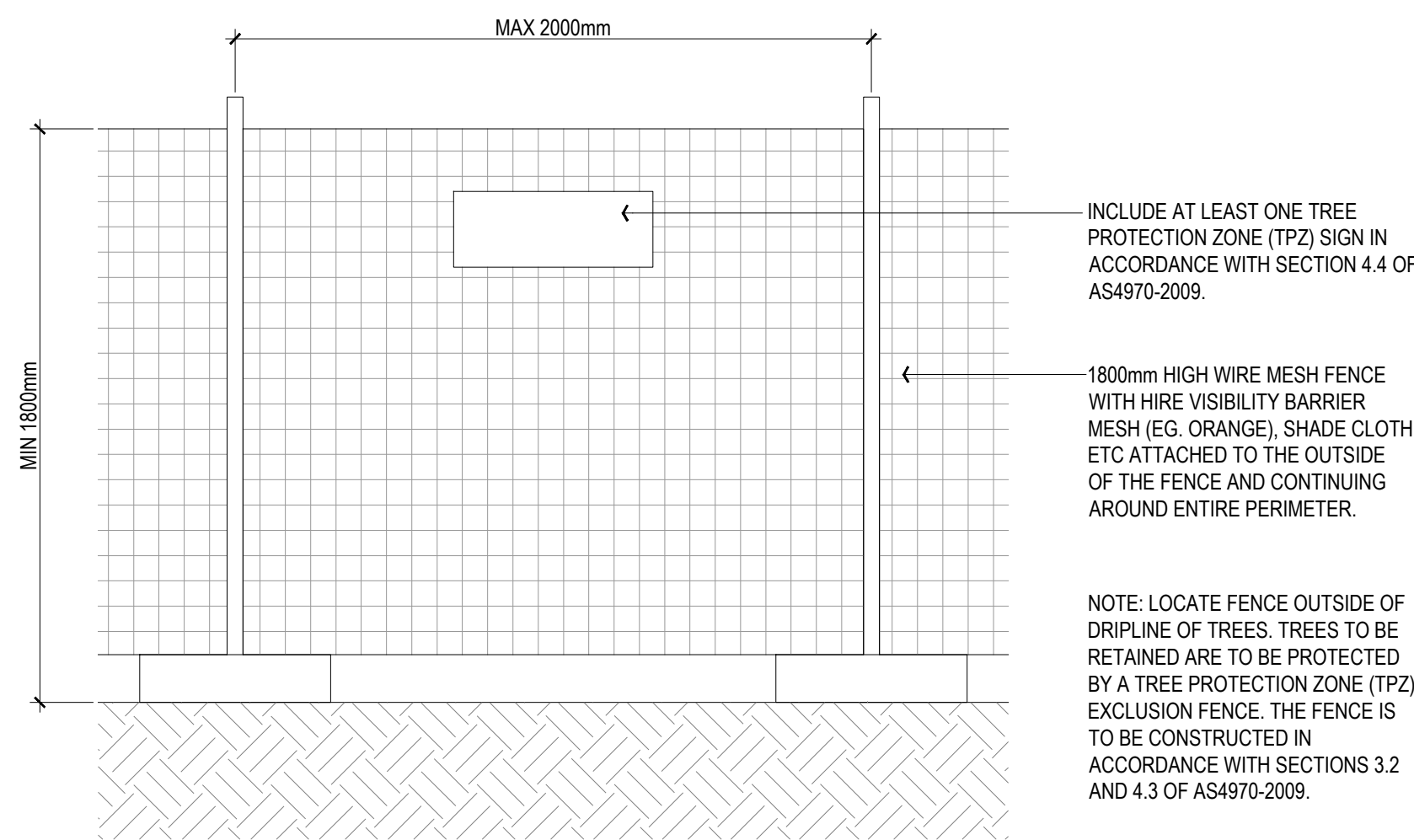
5 STEEL EDGE  
901 1:10 @ A1



6 PLACED BOULDER (R1, R2)  
901 1:20 @ A1



7 SANDSTONE BLOCK (B1, B2)  
901 1:20 @ A1



8 TEMPORARY TPZ FENCE  
901 1:20 @ A1

NOT FOR CONSTRUCTION

Revision	Description	Date	Initial
B	FOR APPROVAL	20.01.23	OM
A	PRELIMINARY- FOR REVIEW	21.12.22	OM

**PLUMMER & SMITH**  
landscape architecture / art / design  
abn: 17 634 944 737 m 0437 599 011  
po box 204 e dan@plummerandsmith.com.au  
murwillumbah NSW 2484 w plummerandsmith.com.au  
© Copyright

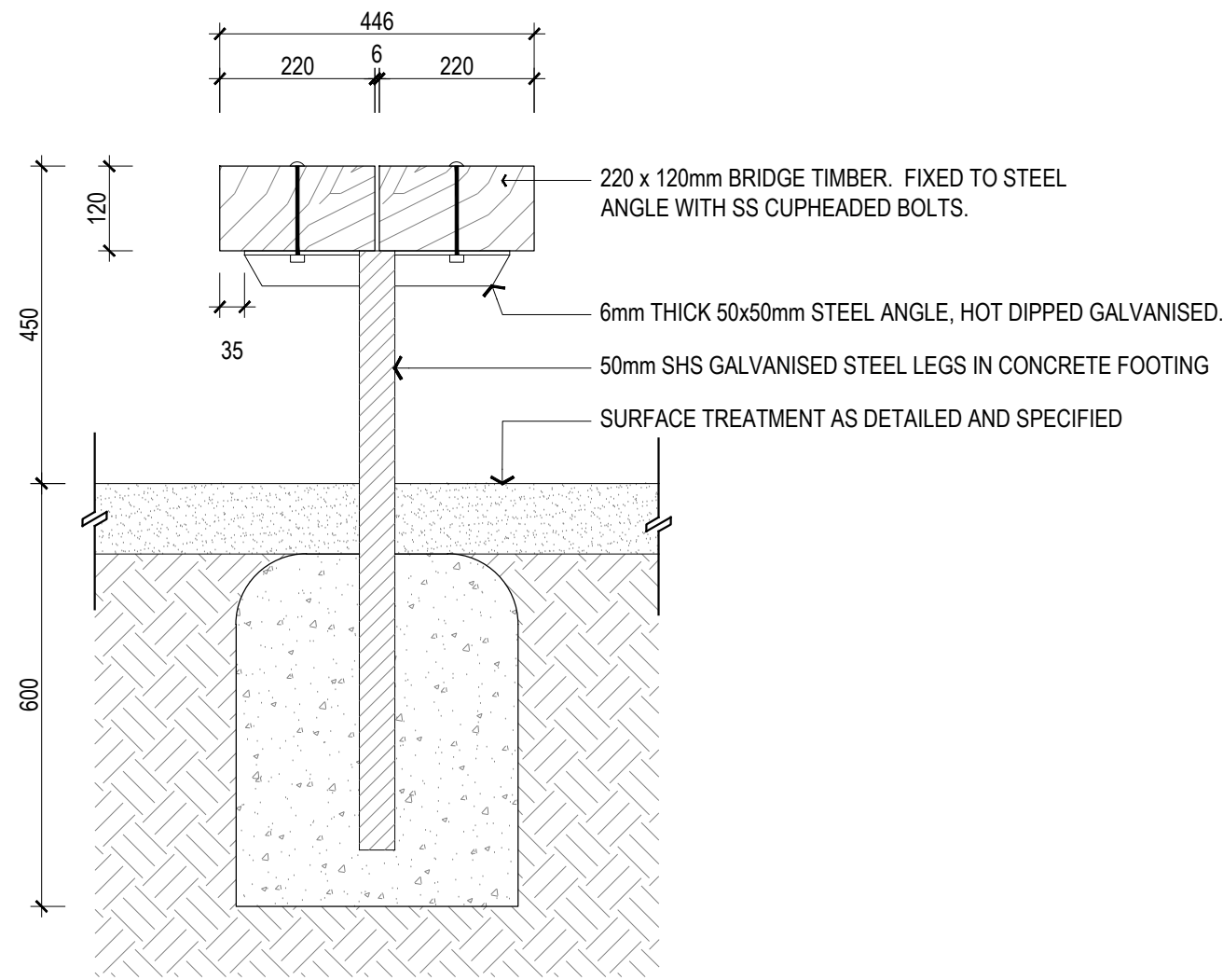
BYRON SHIRE COUNCIL

OLD BYRON HOSPITAL

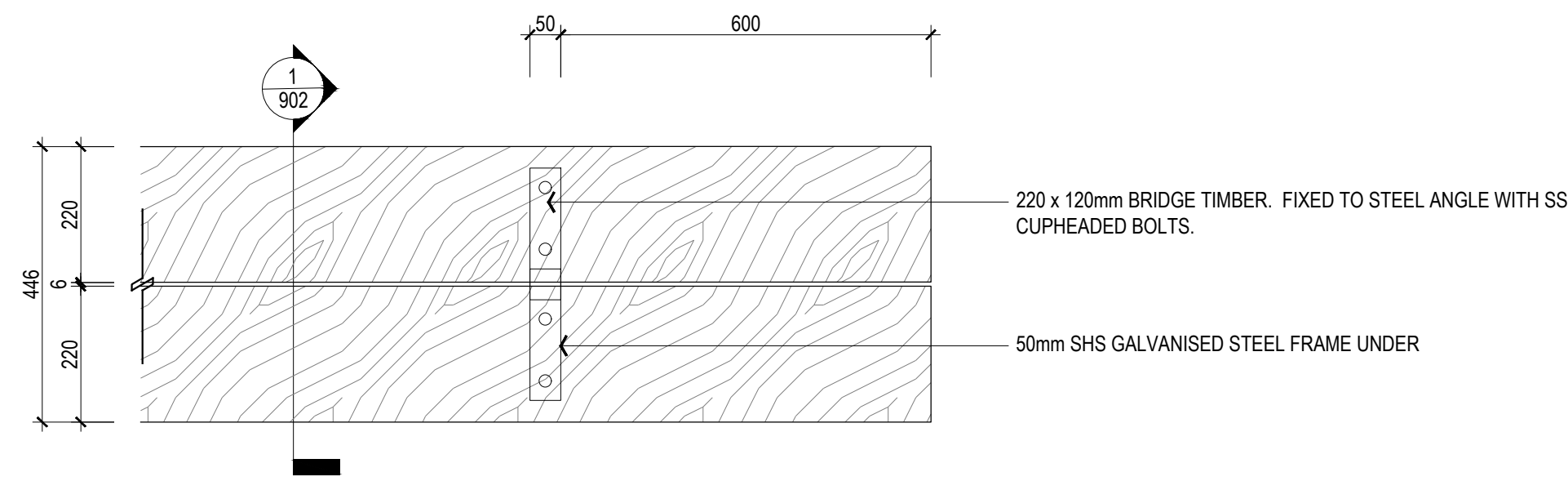
DETAILS

Designed	DP	Drawn	OM
Checked	DP	Approved	
Date	21.12.22	Scale	
Job No.	230	Drawing No.	901
		Revision	B

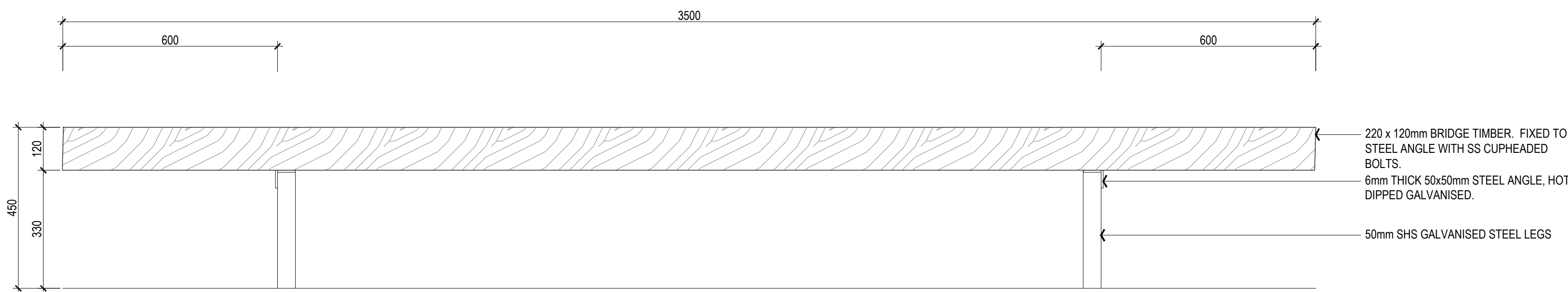




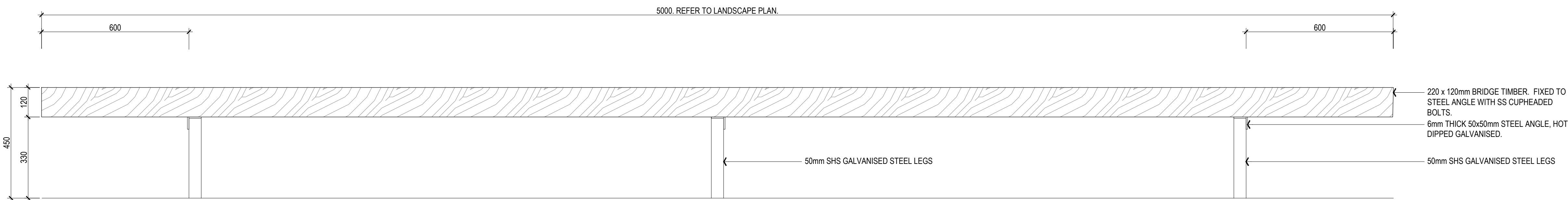
1 BRIDGE TIMBER SEAT - SECTION  
902 1:10 @ A1



2 BRIDGE TIMBER SEAT - PLAN  
902 1:10 @ A1



3 BRIDGE TIMBER SEAT (3.5m) - ELEVATION  
902 1:10 @ A1



4 BRIDGE TIMBER SEAT (5-6m) - ELEVATION  
902 1:10 @ A1

NOT FOR CONSTRUCTION

Revision	Description	Date	Initial
B	FOR APPROVAL	20.01.23	OM
A	PRELIMINARY - FOR REVIEW	21.12.22	OM

**PLUMMER & SMITH**  
landscape architecture / art / design  
abn: 17 634 944 737 m 0437 599 011  
po box 204 e dan@plummerandsmith.com.au  
murwillumbah NSW 2484 w plummerandsmith.com.au  
© Copyright

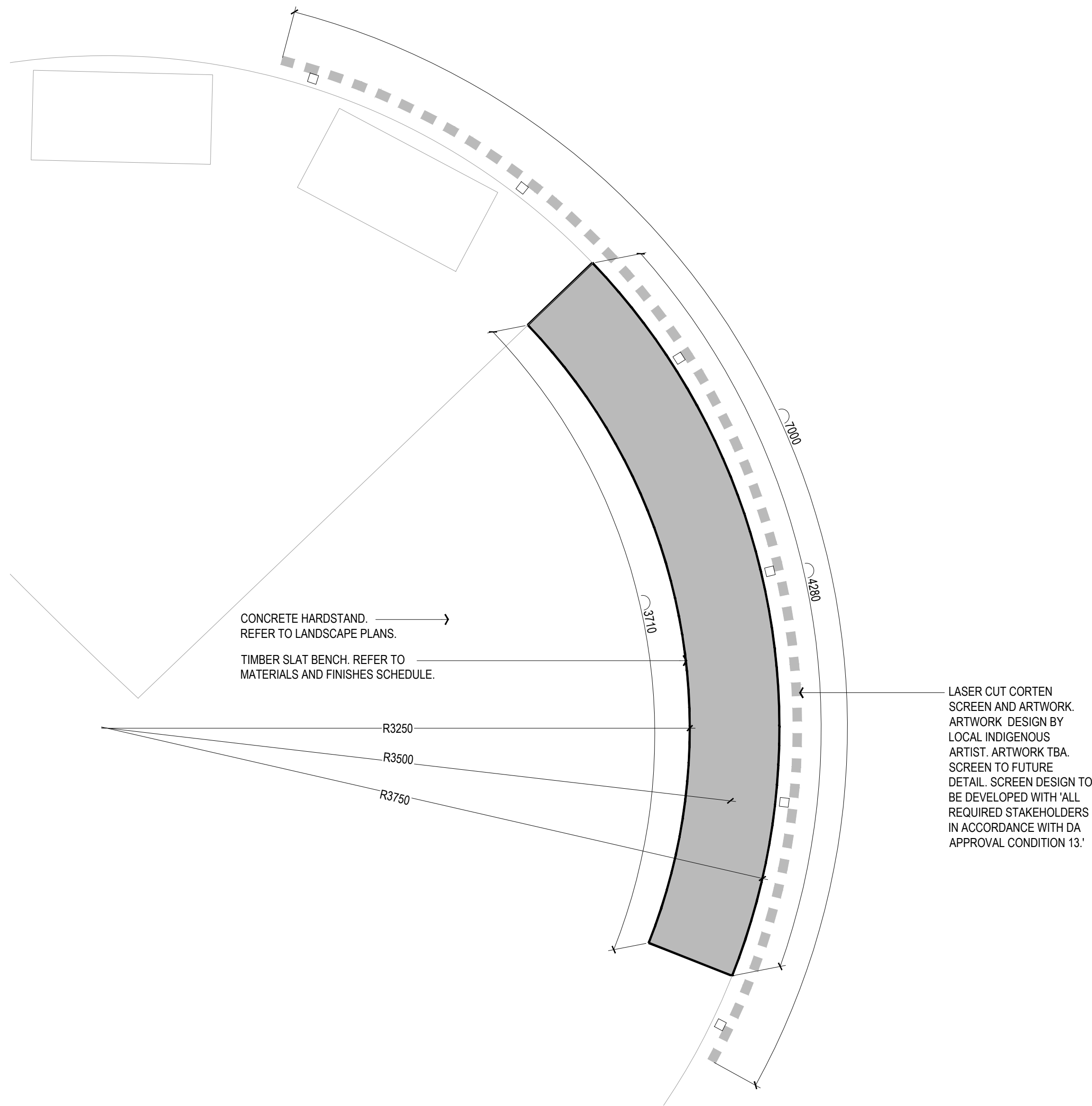
BYRON SHIRE COUNCIL

OLD BYRON HOSPITAL

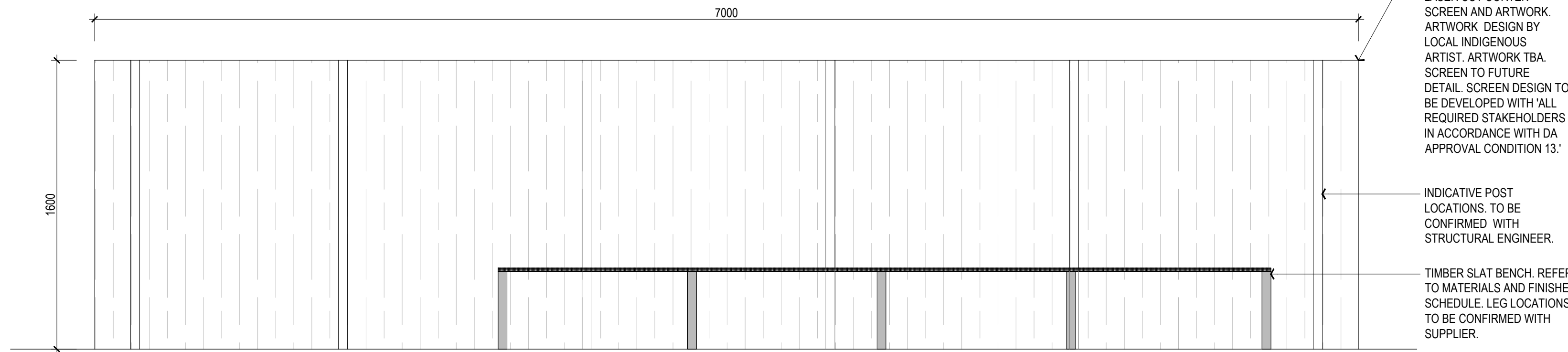
DETAILS

Designed	DP	Drawn	OM
Checked	DP	Approved	
Date	21.12.22	Scale	
Job No.	230	Drawing No.	902
		Revision	B



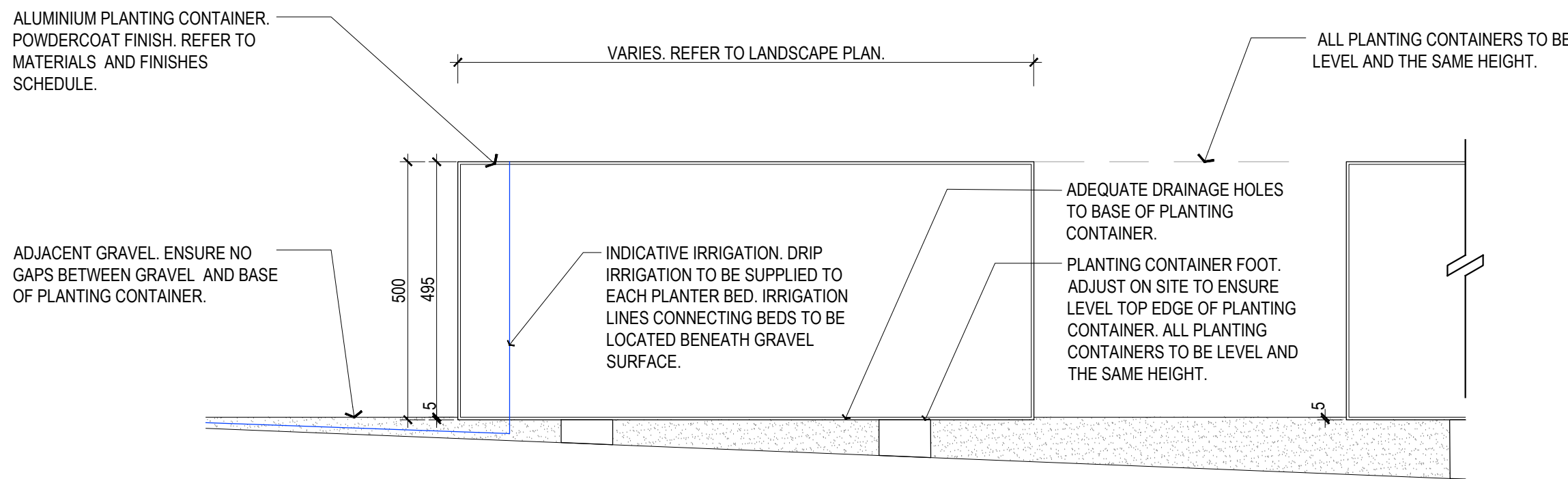


1  
903  
TIMBER BATTEN SEAT AND FEATURE SCREEN- PLAN  
1:20 @ A1



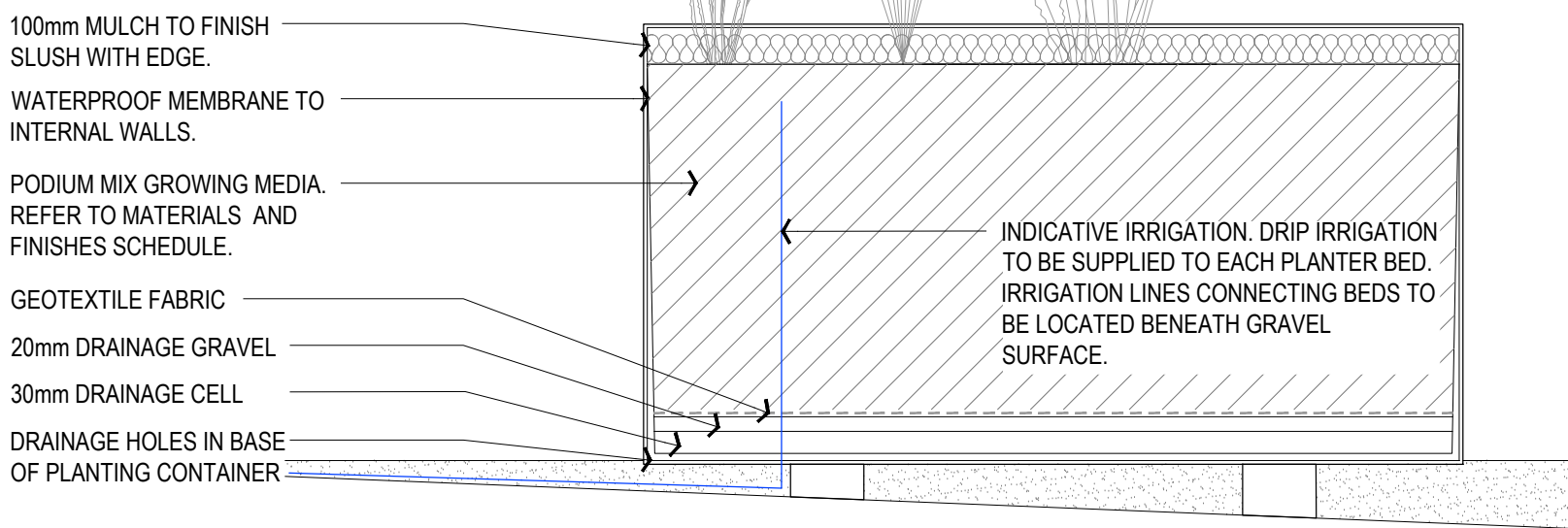
4  
903  
LASER CUT SCREEN - ELEVATION  
1:20 @ A1

NOTE: DESIGN AND CONSTRUCT CUSTOM RAISED PLANTER BEDS. ALL SHOP DRAWINGS TO BE APPROVED BY LANDSCAPE ARCHITECT PRIOR TO FABRICATION AND INSTALLATION. ALL RAISED PLANTER BEDS TO HAVE DRIP IRRIGATION.



2  
903  
CUSTOM RAISED PLANTER BED - SECTION  
1:10 @ A1

NOTE: DESIGN AND CONSTRUCT CUSTOM RAISED PLANTER BEDS. ALL SHOP DRAWINGS TO BE APPROVED BY LANDSCAPE ARCHITECT PRIOR TO FABRICATION AND INSTALLATION. ALL RAISED PLANTER BEDS TO HAVE DRIP IRRIGATION.



3  
903  
CUSTOM RAISED PLANTER BED - GROWING MEDIUM PROFILE  
1:10 @ A1

NOT FOR CONSTRUCTION

Revision	Description	Date	Initial
B	FOR APPROVAL	20.01.23	OM
A	PRELIMINARY - FOR REVIEW	21.12.22	OM

**PLUMMER & SMITH**  
landscape architecture / art / design  
abn: 17 634 944 737 m 0437 599 011  
po box 204 e dan@plummerandsmith.com.au  
murwillumbah NSW 2484 w plummerandsmith.com.au  
© Copyright

BYRON SHIRE COUNCIL

OLD BYRON HOSPITAL

DETAILS

Designed	DP	Drawn	OM
Checked	DP	Approved	
Date	21.12.22	Scale	
Job No.	230	Drawing No.	903
		Revision	B





**PLUMMER & SMITH**  
landscape architecture / art / design  
abn: 17 634 944 737  
po box 204  
murwillumbah NSW 2484  
© Copyright

m 0437 599 011  
e dan@plummerandsmith.com.au  
w plummerandsmith.com.au

# OLD BYRON HOSPITAL

Designed	DP	Drawn	OM
Checked	DP	Approved	
Date 21.12.22		Scale	
Job No.	230	Drawing No.	904
		Revision	B



OLD BYRON HOSPITAL - Plant Schedule						
Code	Botanical Name	Common Name	Container Size	Height & Spread at time of planting	Quantity	Native or exotic edible
TREES / PALMS						
*ACR imp	ACRONYCHIA imperata	Lemon Aspen	45 Litre	1.5m x 1m	2	Yes
*BAC cit	BACKHOUSIA citriodora	Lemon myrtle	45 Litre	1.5m x 1m	2	Yes
*BAN int	BANKSIA integrifolia	Coastal Banksia	45 Litre	1.5m x 1m	2	
*CIT lim	CITRUS limon 'eureka'	Eureka Lemon	100 Litre	3.0m x 2.0m	2	Yes
*TRI lau	TRISTANIOPSIS laurina	Water gum	100 Litre	3.0m x 2.0m	2	
SHRUBS / GROUNDERS / GRASSES						
AUS dul	AUSTROMYRTUS dulcis	Midgen Berry	300mm		48	Yes
ALO bri	ALOCASIA brisbanensis	Cunjevoi	300mm		3	
BAE vir D	BAECKEA virgata Dwarf	Dwarf Heath Myrtle	300mm		17	
BAN HP	BANKSIA spinulosa Honey Pots	Honey Pots	300mm		13	
CAR gla	CARPOBROTUS glaucescens	Pigface	140mm		63	Yes
CHR api	CHRYSOCEPHALUM apiculatum	Yellow Buttons	140mm		65	
CIT aus	CITRUS australasica	Finger Lime	300mm		2	Yes
COR str	CORDYLINE stricta	Slender Palm Lily	300mm		32	
DIA cae	DIANELLA caerulea	Blue Flax Lilly	140mm		141	Yes
DIC rep	DICHONDA repens	Kidney Weed	140mm		24	
DIX SF	DICHONDRA Silver Falls	Silver Falls	140mm		13	
FIC nod	FICINIA nodosa	Knobby Clubrush	140mm		169	
GRE KO	GREVILLEA Pknock Out	Kmnock Out	300mm		6	
GRE PC	GREVILLEA Peaches and Cream	Peaches and Cream	300mm		4	
LOM FT	LOMANDRA Frosty Tops	Frosty Tops	140mm		19	
LOM ver	LOMANDRA Verday	Verday	140mm		277	
LOM LT	LOMANDRA Lime Tuff	Lime Tuff	140mm		136	
MEL thy	MELALEUCA thymifolia	White Lace	300mm		9	
PAN jas	PANDOREA jasminoides	Bower vine	140mm		4	
SYZ aus	SYZYGIIUM australe	Creek Lilly Pilly	45 Litre		4	Yes
TET tet	TETRAGONIA tetragonioides	Warrigal greens	140mm		27	Yes
VIO hed	VIOLA hederaceae	Native Violet	140mm		154	Yes
WES FF	WESTRINGIA fruiticosa 'Flat and Fruity'	Coastal Rosmary	300mm		99	
WES mun	WESTRINGIA fruiticosa 'Mundi'	Coastal Rosmary	300mm		41	
WES Z	WESTRINGIA fruiticosa 'Zena'	Coastal Rosmary	300mm		6	
XAN gla**	XANTHORRHOEA glauca	Grass tree	45 Litre		5	Yes
*Staked as per detail						
** Juvenile (no trunk)						
NOTE: CONTRACTOR TO CONFIRM ALL QUANTITIES IN ACCORDANCE WITH LANDSCAPE PLANS.						