



# Northern Tree Care

ABN 73 674 526 681

Phone 0414186161

6 Abalone Place, Ballina. NSW 2478.

[www.northerntreecare.com.au](http://www.northerntreecare.com.au)

[northerntreecare@me.com](mailto:northerntreecare@me.com)

---

21 Sep 2022

Bart Vanarev

C/- Venu Design Group

Re: 9 Fingal St Brunswick Heads.

The proposal to develop the land at 9 Fingal St will impact on some trees growing on the Council reserve in Balun Lane. The trees are growing close to the property boundary. In order to determine what impact the proposed development is likely to have on the trees, a root investigation was carried out using Ground Penetrating Radar.

The GPR survey was carried out by Lambert Locations on 25<sup>th</sup> September 2022. Their report is attached. The survey showed 9 roots crossing the boundary. They were between 20 and 30 mm in diameter and went from 800 to 1,200 mm into the carpark. The distance into the carpark is the distance the roots were large enough to be picked up by the radar, so larger than 10 mm in diameter.

This is a relatively small number and size of roots given the close proximity to the trunks of the trees. Because the carpark is covered with asphalt the tree roots do not favour the area and so few roots occur there.

There will be no significant damage done to the roots from construction of the development as planned.

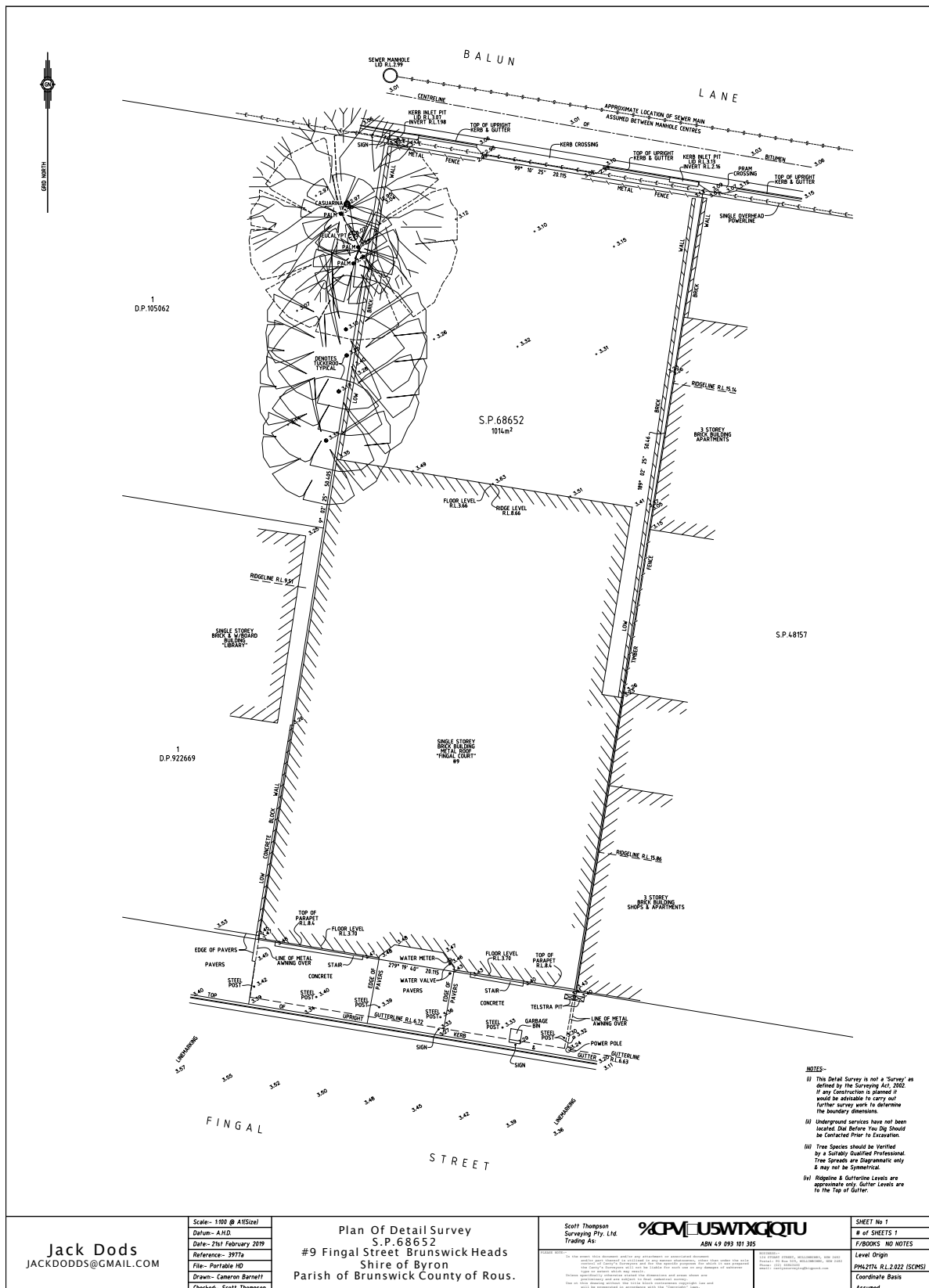
The proposed design has some of the building close to the trees. There are 2 trees that may require removal and a further 2 trees will require removal of the lower branches. Other trees may require minor pruning.

In my opinion Council is likely to support the pruning and removal of the trees although they may require the trees removed to be replaced.

Signed

Peter Gray

Grad Cert Arb (AQF 8).



## Underground Service Locations

### Site Report/Site Details

<b>Asset Detection Specialist</b>	Will S
<b>Client</b>	Northern Tree Care
<b>Contact Name / Number</b>	Peter Gray
<b>Email</b>	northerntreecare@me.com
<b>Date of Works</b>	21/09/2022
<b>Site Address</b>	9 Fingal St Brunswick Heads

The following information and report is generated as Lambert Locations Pty Ltd. has been engaged with the sole purpose for a specific job and client with the intention to assist in minimising damage to underground utilities/services. The client acknowledges that the following findings or readings produced are only correct at the time stated upon this document as underground assets are installed and ground levels can change without our knowledge. Depths, levels and materials shown are supplied as a guide only and should always be verified by potholing before excavation. This note is an integral part of the report that follows.

#### AS 5488-2019 CLASSIFICATION OF SUBSURFACE UTILITY INFORMATION (SUI)

This standard provides a framework for the classification of subsurface utility location and attributes information in terms of specified quality levels. The objective of this standard is to provide utility owners, operators and locators with a framework for the consistent classification of information concerning subsurface utilities. Project risks related to underground utilities can then be properly managed. A quality level describes the amount and accuracy of information that is collected or held on a subsurface utility. There are four quality levels-D, C, B and A.

**Quality Level A:** Highest level of accuracy; individual point for pipe/service,

**Quality Level B:** Traced alignments for subsurface utilities services that induce an electromagnetic current,

**Quality Level C:** Aligned between sighted surface structures indicating a probable subsurface alignment,

**Quality Level D:** Historical records or GPR image field verification.

Service	Quality Level B	Quality Level C or D
Sewer		
Storm Water		
Water		
Telstra		
Electricity		
Gas		
Unknown		
Recycled Water		



GPR scan only conducted to map possible tree root systems. (D)

