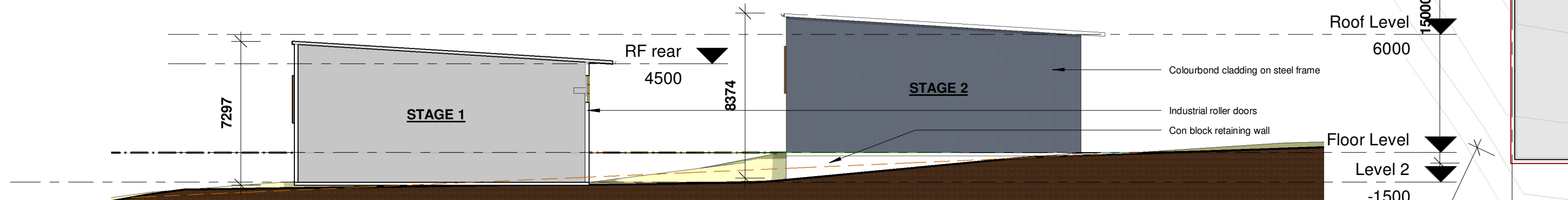
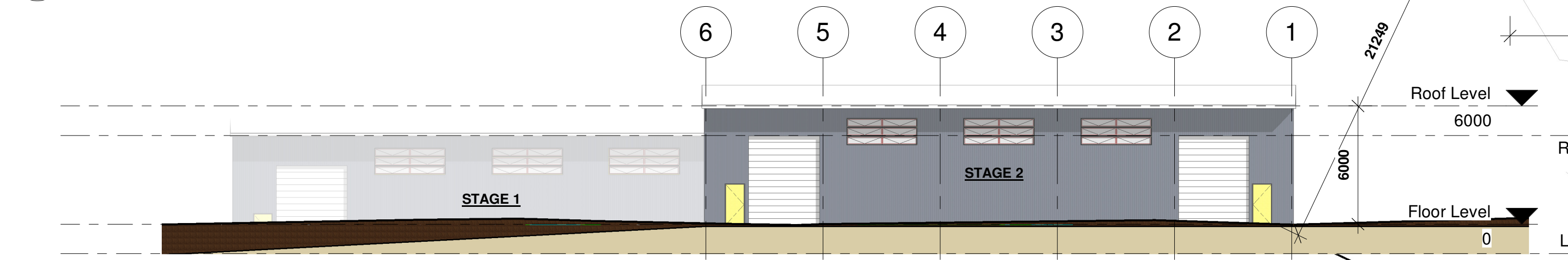


Location Plan



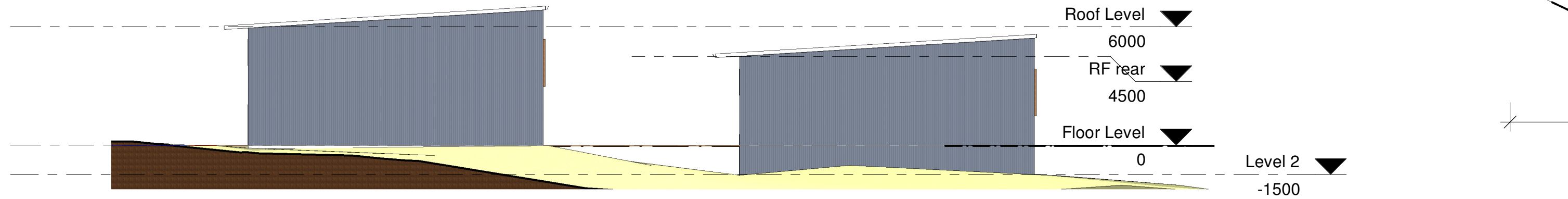
3 East Elevation

1 : 200



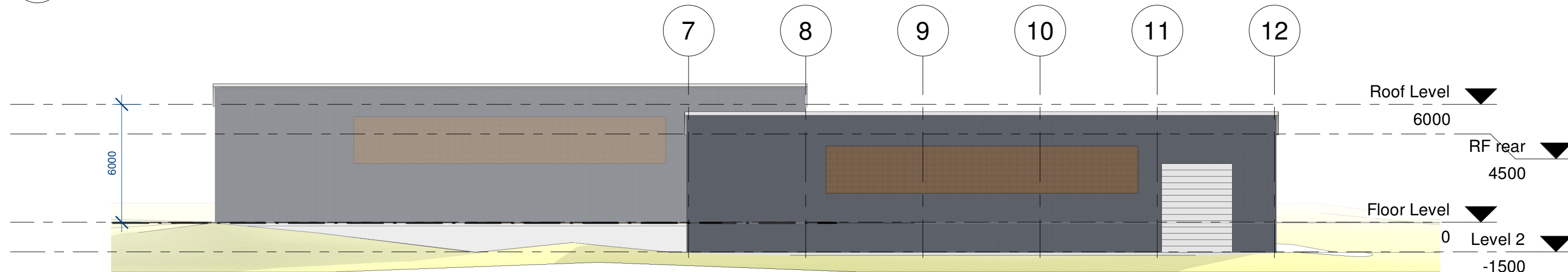
2 North Elevation

1 : 200



4 West Elevation

1 : 200



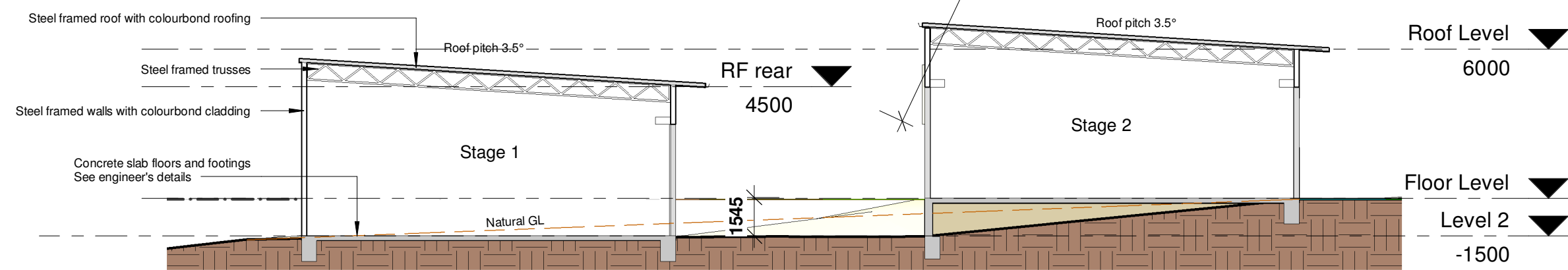
5 South Elevation

1 : 200



1 Floor Level

1 : 200



6 Section A

1 : 200



AGS Commercial Pty Ltd  
172 Casino Street, South Lismore  
PO Box 480 Lismore NSW 2480  
phone 02 66223745  
fax 02 66219455  
www.agscommercial.net.au

RICHMOND VALLEY BUILDING DESIGN

No	Description	Date
	Project Status	07/07/19
a	added staging	10/12/19
c	added section and notes	20/01/20

No	Description	Date

Notes:

Proposed Storage Sheds

Brookfarms  
Lot 5 DP 594645 80 St Helena Road McLoeds Shoot

Concept Views

Project number	AGSbrook
Date	July 19
Drawn by	CW
Checked by	SB

SK2c

Scale 1 : 200 © Copyright

20/01/2020 09:32:43