

LANDSCAPE INTENT

This document is a concept report outlining the proposed landscape treatments for the Old Byron Hospital site for its repurposed use as a community and health centre.

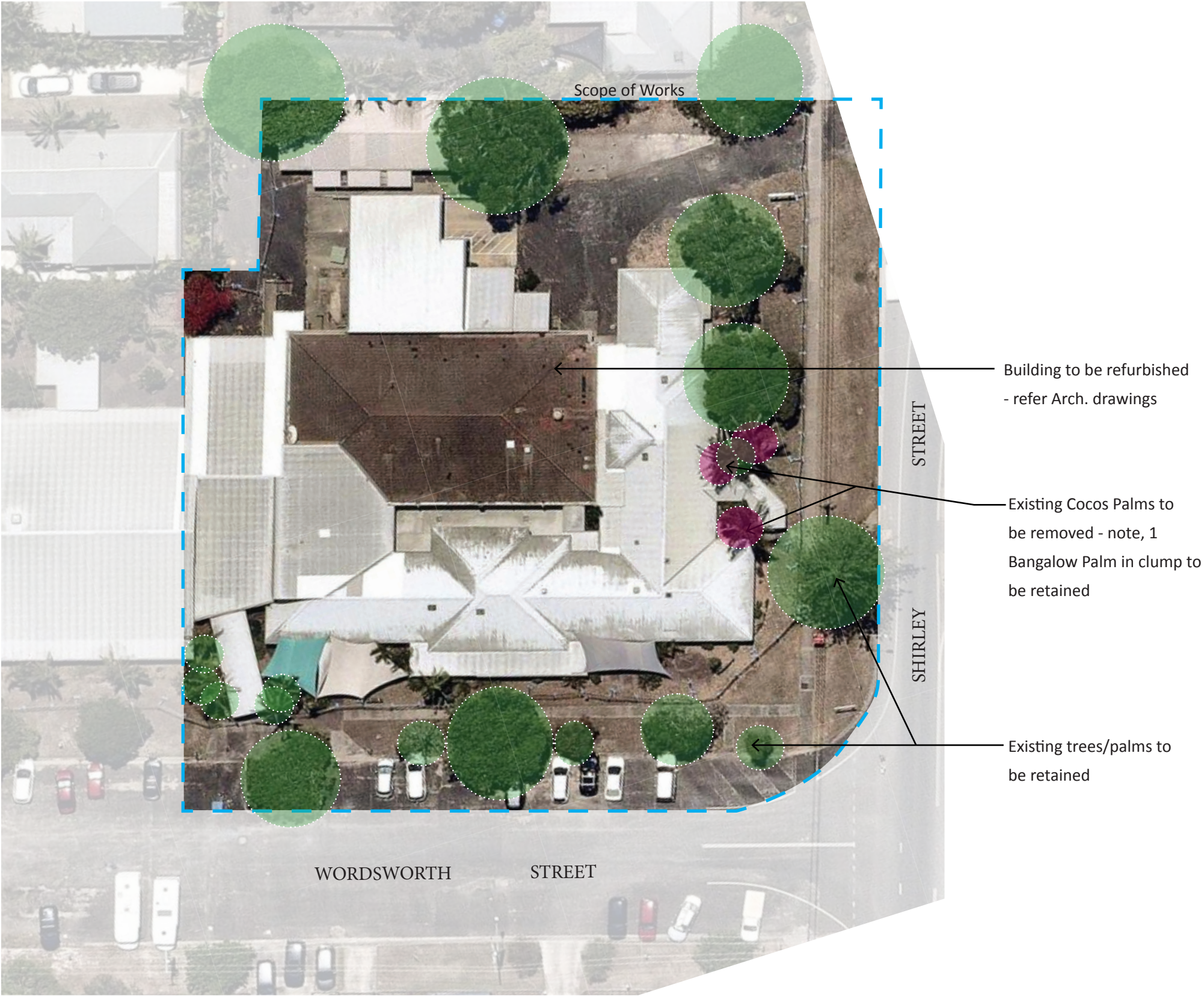
The site is located on the main (northern) entry to Byron Bay town centre on Shirley Street.

The landscape treatments draw inspiration from the residential and community context as well as the environmental setting- including the coastal subtropical environment and the adjacent wetland landscape.

The proposal will provide a variety of scaled flexible outdoor spaces with greenery, shade and seating opportunities for the community and centre's users. The proposed design will increase access and circulation into the building by defining main entries with materiality and arbour structures and providing more informal connections for direct access.

A key part of the landscape intent is the showcasing of the local environment through the use of native plants and the encouragement of the use and integration of outdoor areas. The proposals include generous public domain treatments to improve Shirley Street and site amenity. By proposing integrated landscape treatemtns to both 'private' and public domain areas the community is included as an important future user and beneficiary of the improvements proposed- both architectural and landscape.

EXISTING SITE





Existing Melaleuca tree to be retained



Existing Eucalypt tree to be retained



Existing Norfolk Island Pine to be retained



Existing Cocos Palms to be removed - Note: 1 Bangalow Palm in clump to be retained



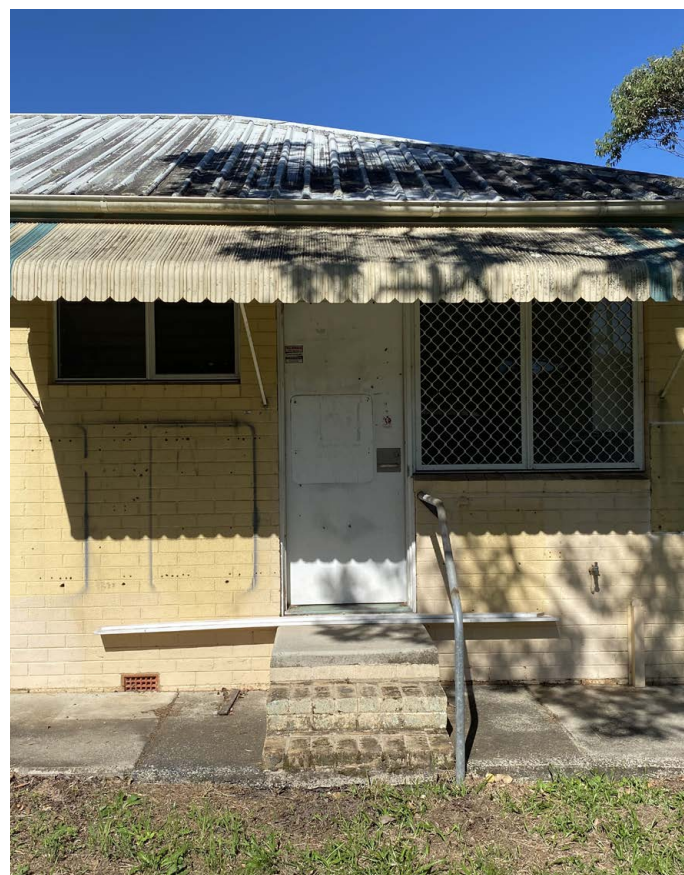
Existing car park/vehicle access area



Existing car park/vehicle access area



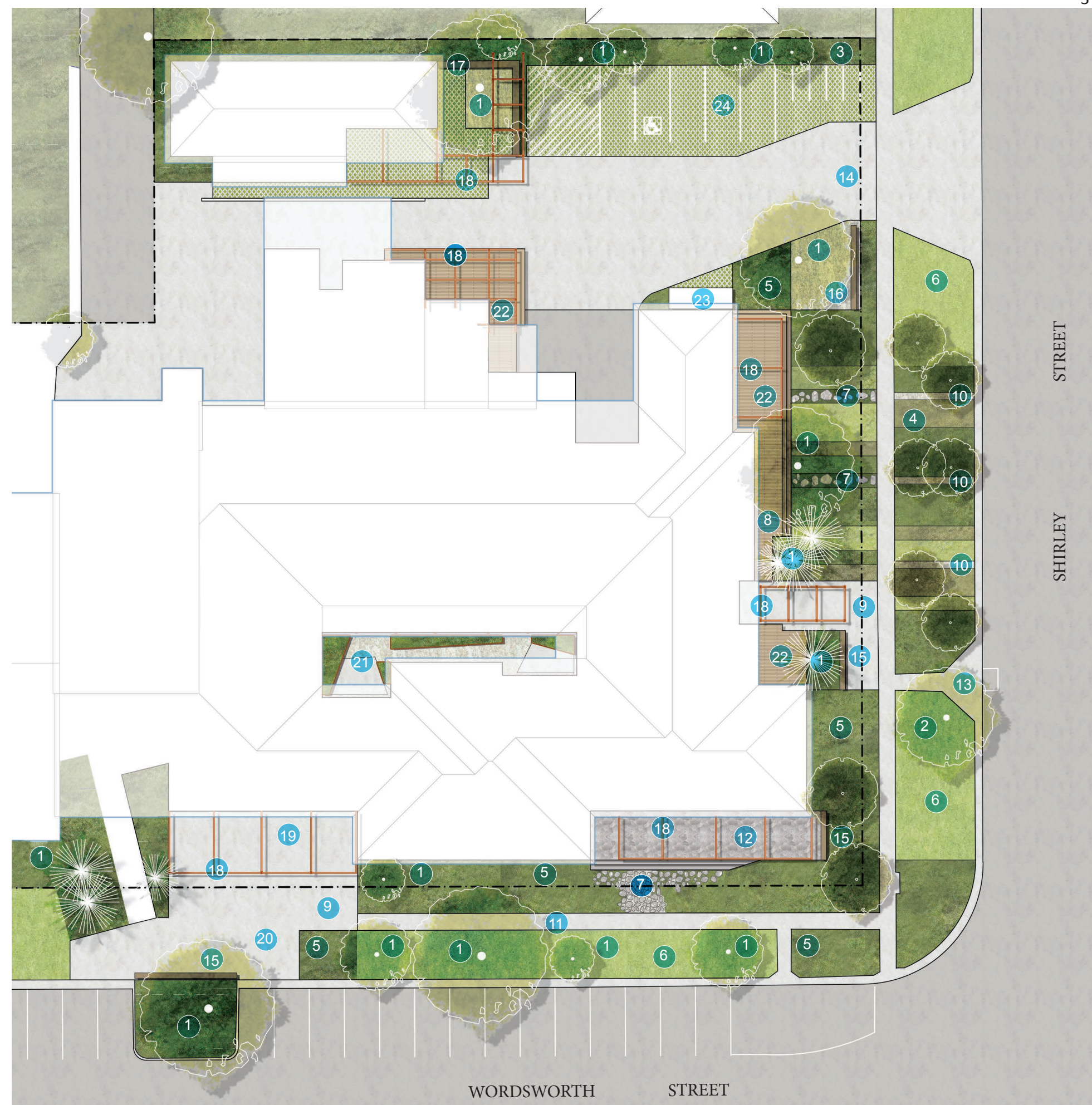
Existing courtyard



Building to be refurbished

LANDSCAPE PLAN

1. Existing trees to be retained
2. Existing Norfolk Island Pine to be retained
3. Screen planting and new shade tree to boundary
4. Landscape treatments (potentially including productive plants) to public domain areas to encourage community interaction and participation
5. Planted areas for improved streetscape amenity and to subtly define public and private
6. Turf area
7. Informal garden paths to deck areas
8. Seating and deck areas to be designed around existing trees to be retained (existing Cocos Palms to be removed)
9. Feature pavers to main entry locations
10. Informal pathway to road edge to allow easy access to car parking
11. Widened concrete footpath
12. Paved deck areas associated with tenancy entries
13. Existing crossing point
14. Concrete driveway & service vehicle entry
15. Timber bench seat
16. Timber bench seat with gravel area
17. Timber bench seat with gravel area & permeable paving for informal meeting area
18. Corten steel arbour structure
19. Cafe courtyard area
20. Public domain surface treatments extend to the entry providing improvements to the street edge
21. Courtyard with verandah surround- Raised corten steel planters with gravel & paved hardstand for informal seating areas
22. Timber decking to terrace areas
23. Bicycle storage
24. Permeable paved parking area

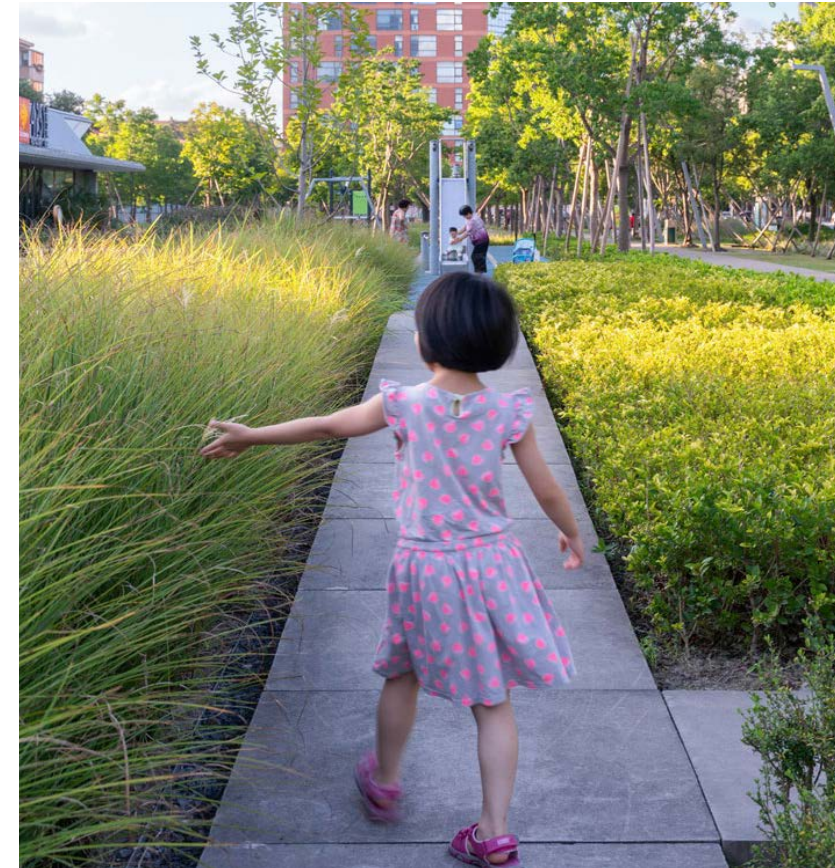




Soft and hard materials combining for effect



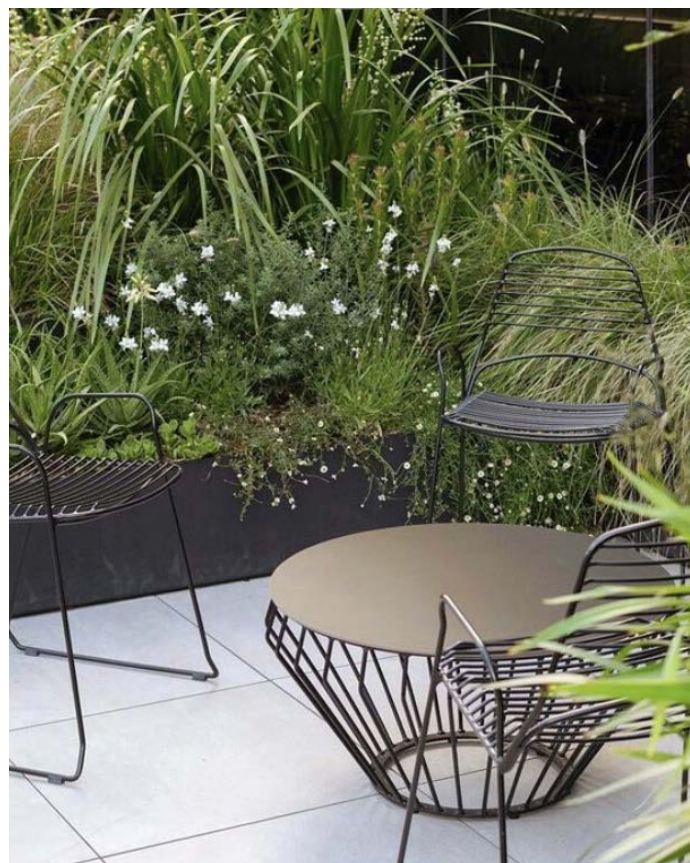
Planted corten steel arbour and indoor / outdoor connection



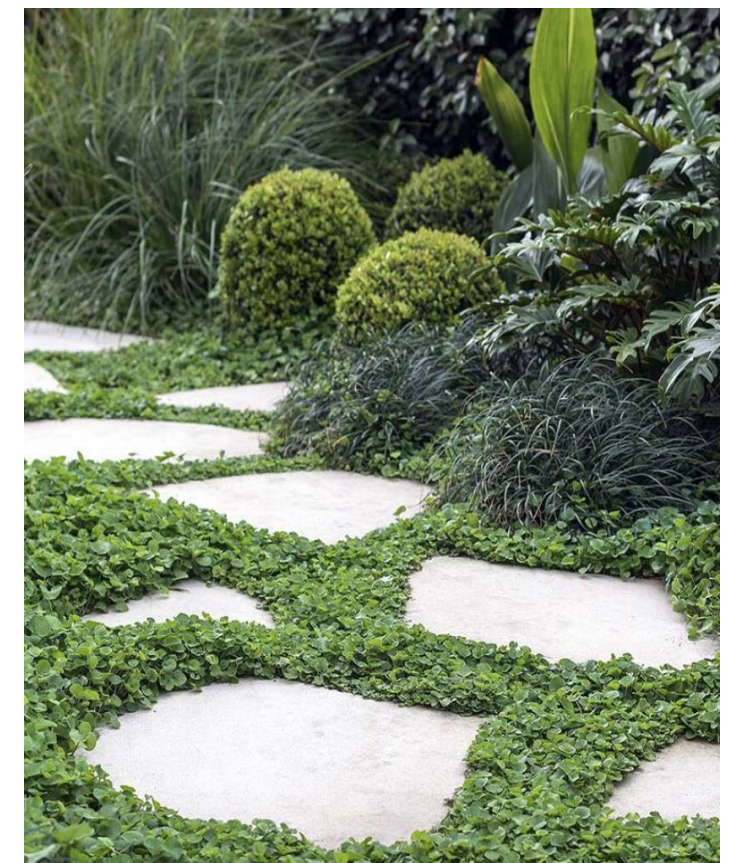
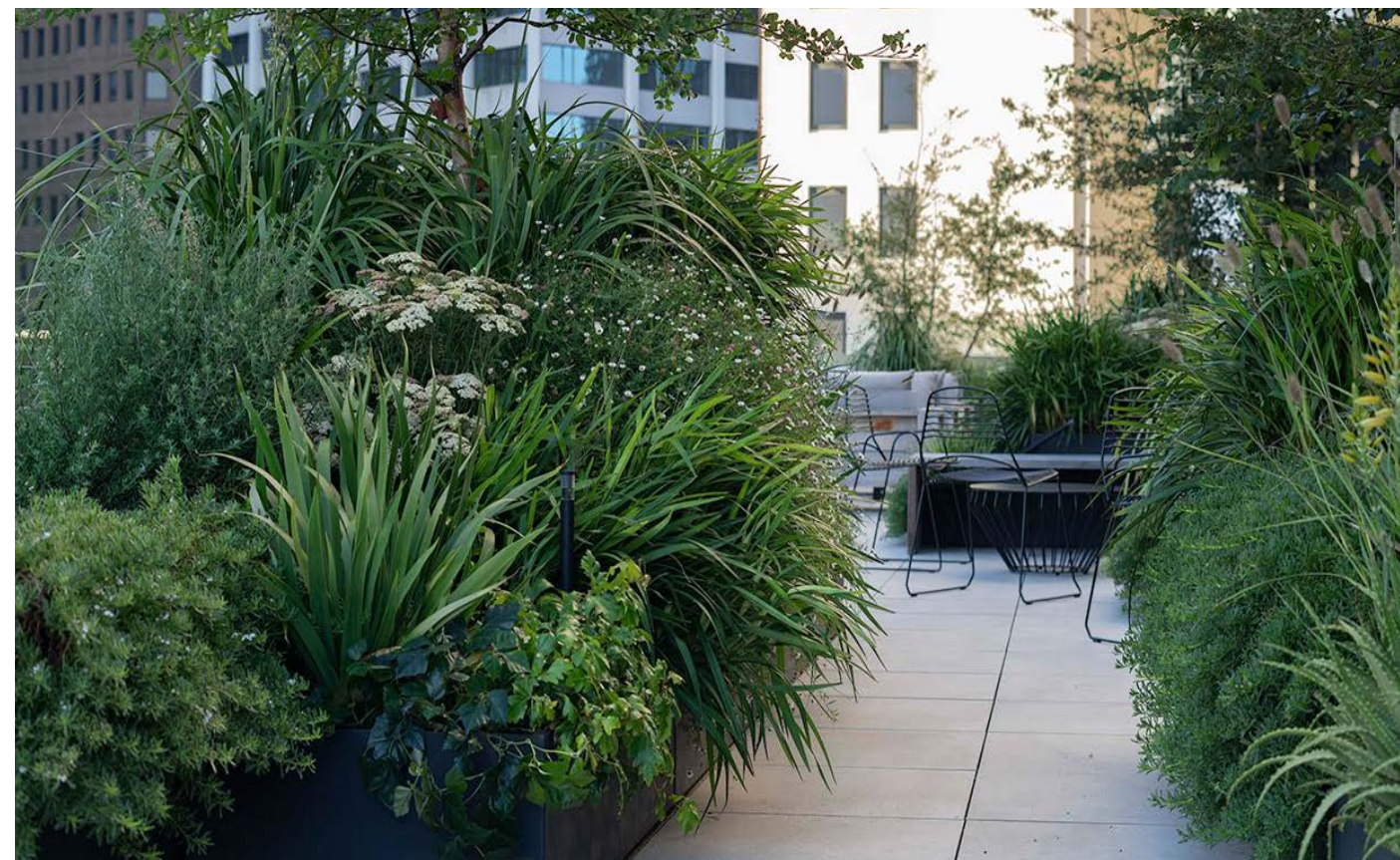
Formalised ornamental & edible native coastal garden to encourage community interaction and participation



Timber plinth seats - spotted gum or recycled Australian hardwood



Internal courtyard - Corten steel planters with lush planting surrounding small seating areas

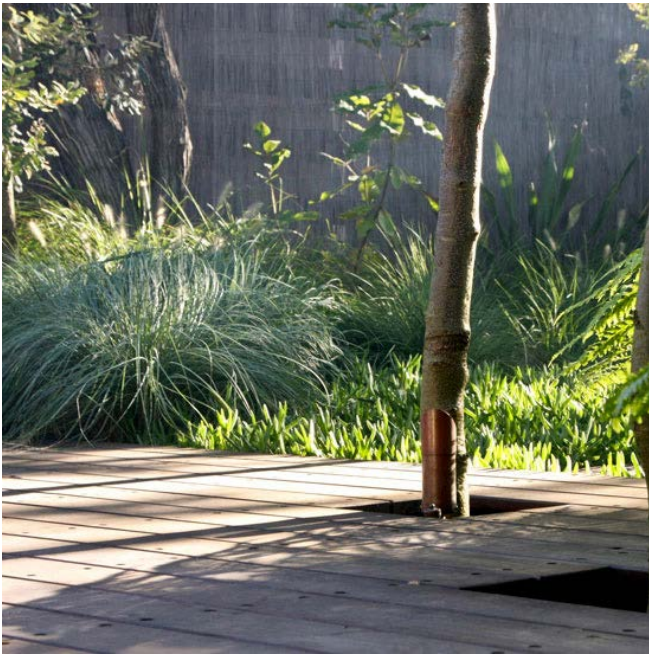


Stone steppers as Informal paths through garden to terrace areas

SURFACES



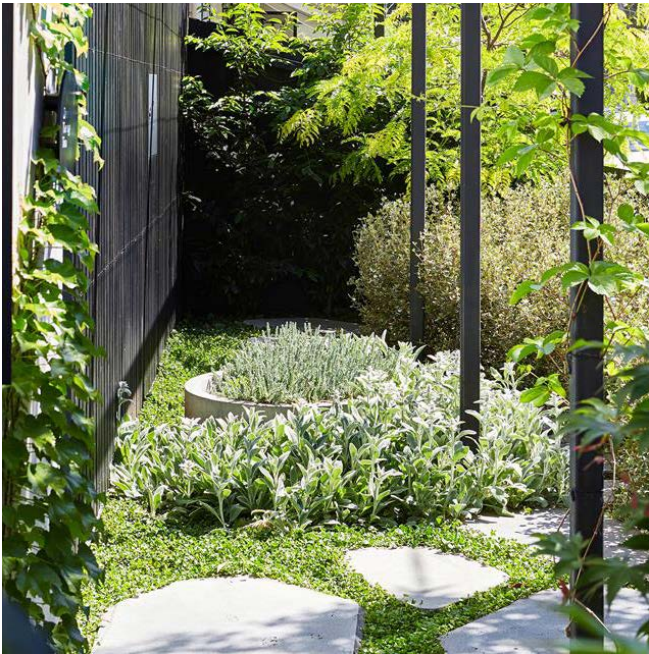
Concrete finishes (pathways) - neutral grey with a light broom finish



Timber Decking to selected terrace areas



Pavers ('deck' areas) - crazy paving, Eco Outdoor 'Endicott'



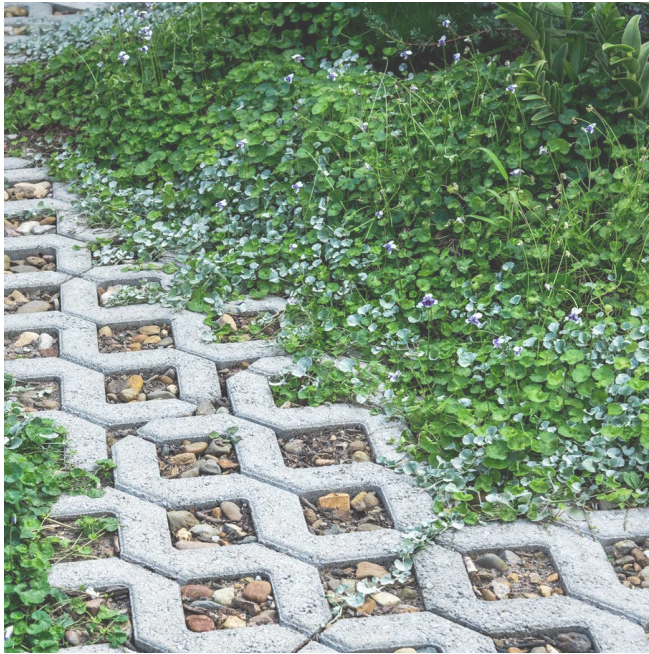
Stone steppers (informal pathways) - Large flagging steppers to match crazy pavers



Feature grey river rock gravel (courtyard space)



Compressed gravel (potential informal pathways)



Permeable paver & planting in gravel for outdoor meeting area



Permeable pavement treatments for courtyards & parking areas

PLANTING PALETTE

GROUNDCOVERS, GRASSES & CLIMBERS

Botanical Name	Common Name
ANIGOZANTHOS flavidus	Kangaroo Paw
CARPOBROTUS glaucescens	Pig Face
CASUARINA glauca Cousin It	Cousin It
CASUARINA glauca Green Wave	Green Wave
DIANELLA caerulea	Flax Lily
DICHONDRA repens	Kidney Weed
FICINIA nodosa	Knobby Clubrush
HARDENBERGIA violacea	Happy Wanderer
HOYA australis	Wax Vine
LIBBERTIA paniculata	Grass Flag
LOMANDRA hystrix	Lomandra
LOMANDRA Verday	Verday
MYOPORUM parvifolium Yareena	Yareena
PANDOREA jasminoides Southern Belle	Wonga Vine
SCAEVOLA albida Mauve Clusters	Mauve Clusters
VIOLA hederaceae	Native Violet

SHRUBS & FEATURE PLANTS

Botanical Name	Common Name
AUSTROMYRTUS dulcis	Midgen Berry
ALOCASIA brisbanensis	Cunjevoi
ASPLENIUM australasicum	Birds Nest Fern
BAEKEA virgata Dwarf	Baekea
BANKSIA Coastal Cushions	Coastal Cushions
BANKSIA collina Little Eric	Little Eric
BANKSIA spinulosa Bush Candles	Bush Candles
BANKSIA robur	Swamp Banksia
CORDYLINE petiolaris	Broad Leafed Palm Lily
DORYANTHES palmeri	Gymea Lily
GREVILLEA Peaches and Cream	Peaches And Cream
MELALEUCA thymifolia	White Lace
MELASTOMA affine	Blue Tongue
PITTOSPORUM tobira Miss Muffet	Miss Muffet
SYZYGIUM Pink Cascade	Pink Cascade Lilly Pilly
WESTRINGIA fruticosa	Coastal Rosemary
WESTRINGIA fruticosa Zena	Coastal Rosemary

TREES & PALMS

Botanical Name	Common Name
ARCHONTOPHOENIX cunninghamiana	Bangalow Palm
BANKSIA integrifolia	Coast Banksia
CUPANIOPSIS anacardioides	Tuckeroo
HIBISCUS tiliaceus	Cottonwood
TRISTANIOPSIS laurina	Water Gum
MELALEUCA quinquenervia	Paperbark

Note: Planting list to be expanded upon during documentation. Local indigenous food plants to be researched and included in construction documentation package.



ANIGOZANTHOS Kangaroo Paw



ASPLENIUM australasicum



CARPOBROTUS glaucescens



CASUARINA glauca Green Wave



SYZYGIUM Pink Cascade



FICINIA nodosa



WESTRINGIA fruticosa



AUSTROMYRTUS dulcis



HOYA australis



LOMANDRA hystrix



MYOPORUM parvifolium Yareena



VIOLA hederaceae