

LEGEND

- DW

100

INDICATES 100mm THICK CONCRETE DRIVEWAY SLAB ON 100 MINIMUM COMPACTED ROAD BASE WITH SL82 MESH TOP (30 COVER)
- FP

100

INDICATES 100mm THICK CONCRETE PATHWAY SLAB ON 100 MINIMUM COMPACTED ROAD BASE WITH SL72 MESH TOP (30 COVER)
- SW

INDICATES STORMWATER PIPE
- (e)

DENOTES "EXISTING"
- EJ

DENOTES EXPANSION JOINT
- KA

DENOTES KERB ADAPTOR
- KIP

DENOTES KERB INLET PIT
- KJ

DENOTES "CONNELLY" KEY JOINT OR EQUIVALENT
- MJ

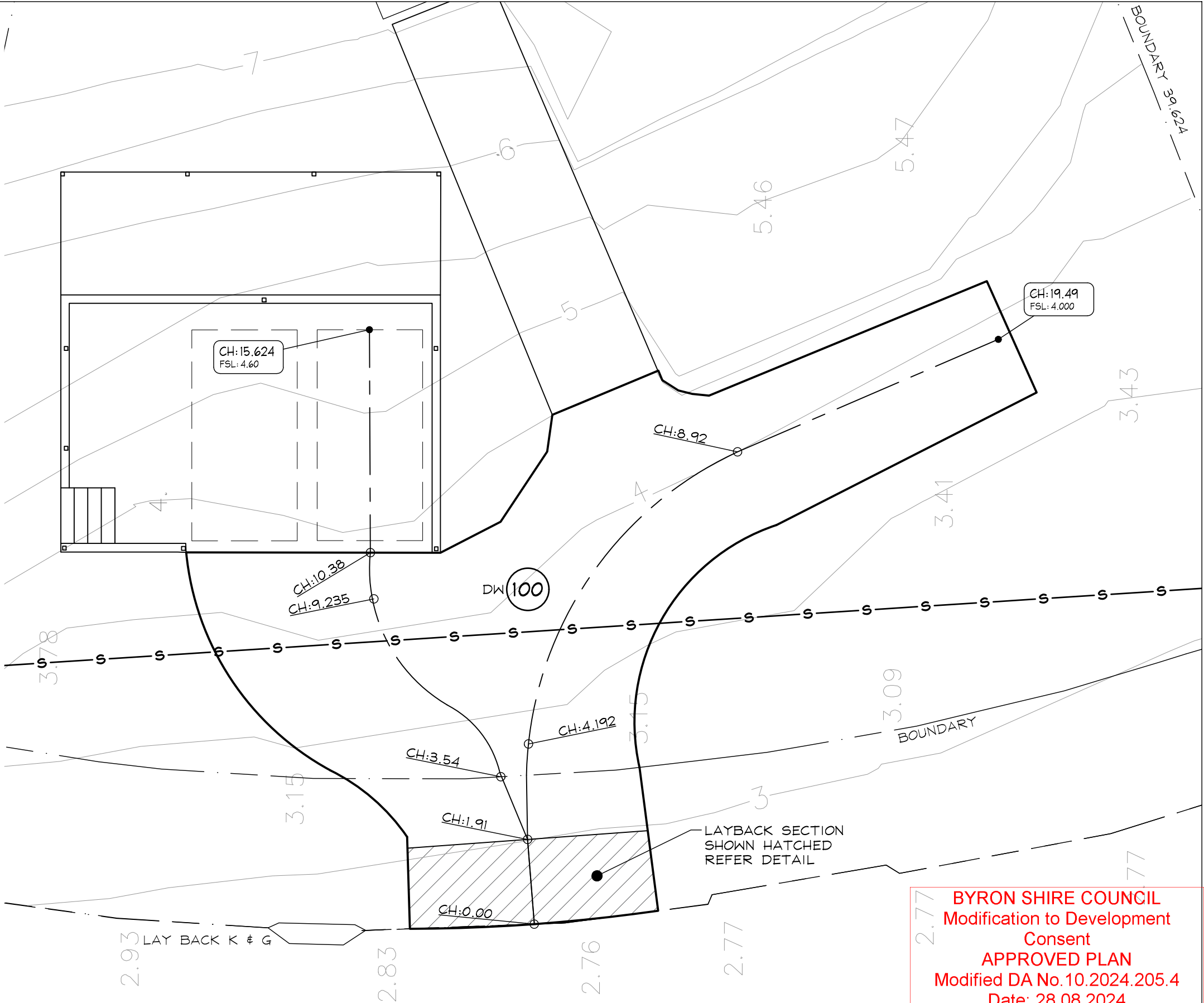
DENOTES MASTIC JOINT
- RL

DENOTES RELATIVE LEVEL
- SIP

DENOTES SURFACE INLET PIT

NOTES

1. REFER TO DRAWINGS C2 AND C3 FOR CIVIL WORKS DETAILS.
2. REFER TO DRAWING CGNI FOR CIVIL WORKS GENERAL NOTES.
3. ROOF DRAINAGE DESIGN BY OTHERS.
- ROAD PAVEMENTS:-
1. 25mm AC10 ASPHALTIC SEAL.
2. 7mm PRIMER SEAL.
3. 150mm THICK CRUSHED ROCK ROAD BASE LAYER (DGB20) COMPACTED TO MINIMUM 100% STANDARD COMPACTION.
4. 150mm THICK CRUSHED ROCK SUB-BASE LAYER (DGS40) COMPACTED TO MINIMUM 100% STANDARD COMPACTION.
5. ROLL AND COMPACT SUBGRADE TO MINIMUM 98% STANDARD COMPACTION. PROOF ROLL IN PRESENCE OF ENGINEER. MINIMUM CBR OF 10% TO BE CONFIRMED BY TESTING UNDERTAKEN BY A LICENSED GEOTECHNICAL AUTHORITY.
6. ALL WORK TO BE COMPLETED TO AUSPEC STANDARDS AND COUNCIL SATISFACTION.
7. FINAL PAVEMENT DEPTHS TO BE CONFIRMED BY COUNCIL WHEN SUBGRADE EXPOSED.



BYRON SHIRE COUNCIL  
Modification to Development  
Consent  
APPROVED PLAN  
Modified DA No.10.2024.205.4  
Date: 28.08.2024

REVISONS	A		FOR CONSTRUCTION	07.08.24
	ISSUE	DESCRIPTION		DATE

© COPYRIGHT - LUCENA ENGINEERS PTY. LTD.  
AS DATE OF ISSUE

THIS DRAWING IS THE PROPERTY OF LUCENA ENGINEERS PTY. LTD. AND MUST NOT BE RETAINED, COPIED OR USED WITHOUT THE CONSENT OF THE COMPANY.

PRINCIPAL ENGINEERS SIGNATURE

**Lucena**

CIVIL & STRUCTURAL ENGINEERS

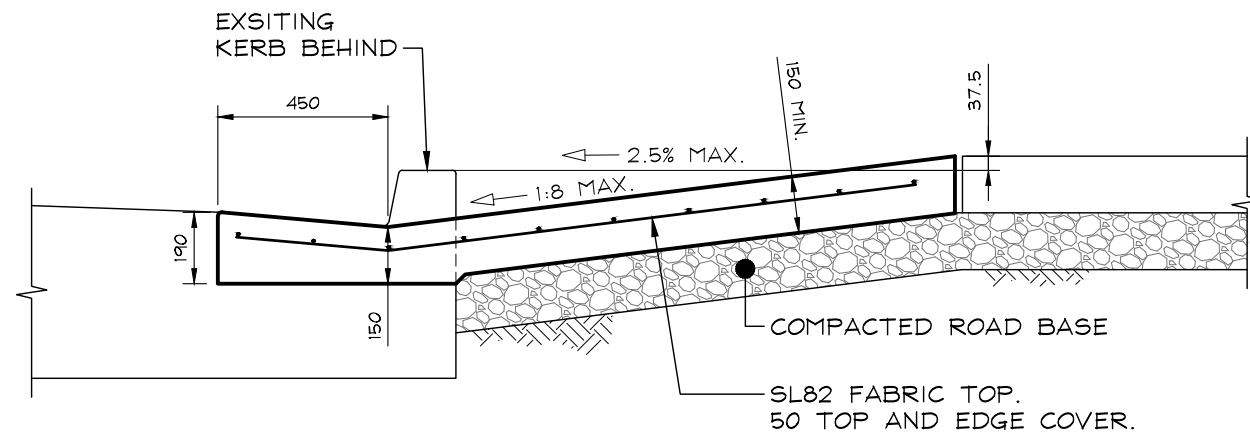
t 02 6687 8182  
www.lucena.com.au  
office@lucena.com.au

PROJECT  
VEHICLE TURNING

AT  
8 ALOOTA CRESCENT, OCEAN SHORES NSW 2483

FOR  
LUTE

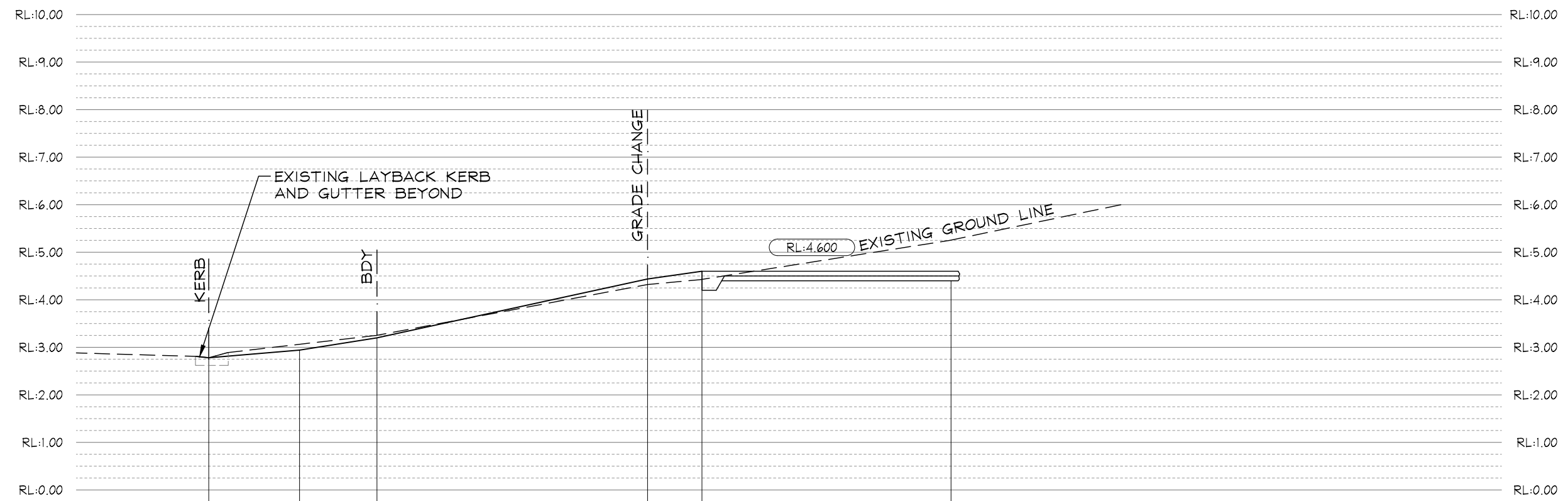
DRAWING TITLE			
SITE PLAN			
DESIGN	DRAWN	DRAWING SCALE	SHEET SIZE
DM	MN	1:100	A3
PROJECT REF No		DRAWING No	REVISION
240231		C1	A



TYPICAL LAYBACK DRIVEWAY CROSSOVER DETAIL  
SCALE - 1:20

BYRON SHIRE COUNCIL  
Modification to Development  
Consent  
APPROVED PLAN  
Modified DA No.10.2024.205.4  
Date: 28.08.2024

REVISIONS				© COPYRIGHT - LUCENA ENGINEERS PTY. LTD. AS DATE OF ISSUE	<div><div>Lucena</div><div>CIVIL &amp; STRUCTURAL ENGINEERS</div></div> <div>t 02 6687 8182 www.lucena.com.au office@lucena.com.au</div>	PROJECT VEHICLE TURNING  AT 8 ALOOTA CRESCENT, OCEAN SHORES NSW 2483 FOR LUTE	DRAWING TITLE SECTIONS / DETAILS 1			
				THIS DRAWING IS THE PROPERTY OF LUCENA ENGINEERS PTY. LTD. AND MUST NOT BE RETAINED, COPIED OR USED WITHOUT THE CONSENT OF THE COMPANY.			DESIGN DM	DRAWN MN	DRAWING SCALE AS SHOWN	SHEET SIZE A3
	A	FOR CONSTRUCTION	07.08.24	PRINCIPAL ENGINEERS SIGNATURE 			PROJECT REF No 240231		DRAWING No C2	REVISION A
	ISSUE	DESCRIPTION	DATE							



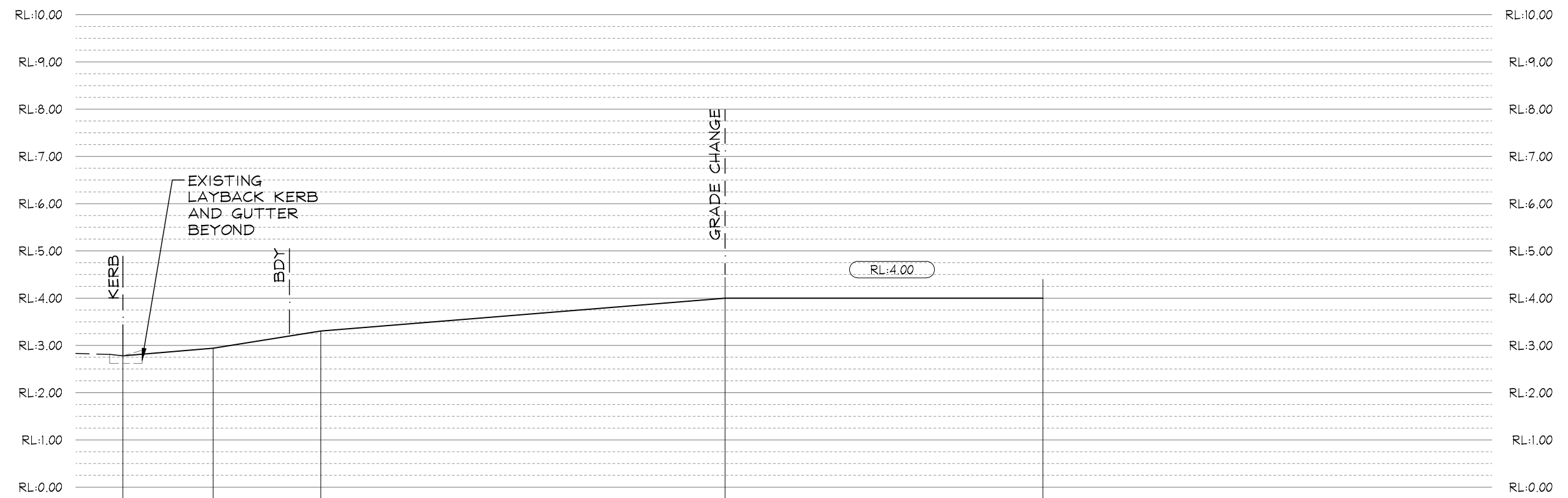
SURFACE GRADE		8.38%	15.95%	21.74%	14.1%	FLAT		SURFACE GRADE
SURFACE LEVEL (m)		2.780	2.94	3.20	4.438	4.60	4.60	SURFACE LEVEL (m)
CHAINAGE (m)		0.000	1.91	3.540	9.235	10.381	15.624	CHAINAGE (m)

DRIVEWAY LONGITUDINAL SECTION

HORIZONTAL SCALE - 1:100 AT A3  
VERTICAL SCALE - 1:100 AT A3

BYRON SHIRE COUNCIL  
Modification to Development  
Consent  
APPROVED PLAN  
Modified DA No.10.2024.205.4  
Date: 28.08.2024

REVISIONS				© COPYRIGHT - LUCENA ENGINEERS PTY. LTD. AS DATE OF ISSUE	<div><div>Lucena</div><div>CIVIL &amp; STRUCTURAL ENGINEERS</div></div> <div>t 02 6687 8182 www.lucena.com.au office@lucena.com.au</div>	PROJECT VEHICLE TURNING  AT 8 ALOOTA CRESCENT, OCEAN SHORES NSW 2483 FOR LUTE	DRAWING TITLE SECTIONS / DETAILS 2			
				THIS DRAWING IS THE PROPERTY OF LUCENA ENGINEERS PTY. LTD. AND MUST NOT BE RETAINED, COPIED OR USED WITHOUT THE CONSENT OF THE COMPANY.			DESIGN DM	DRAWN MN	DRAWING SCALE AS SHOWN	SHEET SIZE A3
	A	FOR CONSTRUCTION	07.08.24	PRINCIPAL ENGINEERS SIGNATURE 			PROJECT REF No 240231		DRAWING No C3	REVISION A
	ISSUE	DESCRIPTION	DATE							



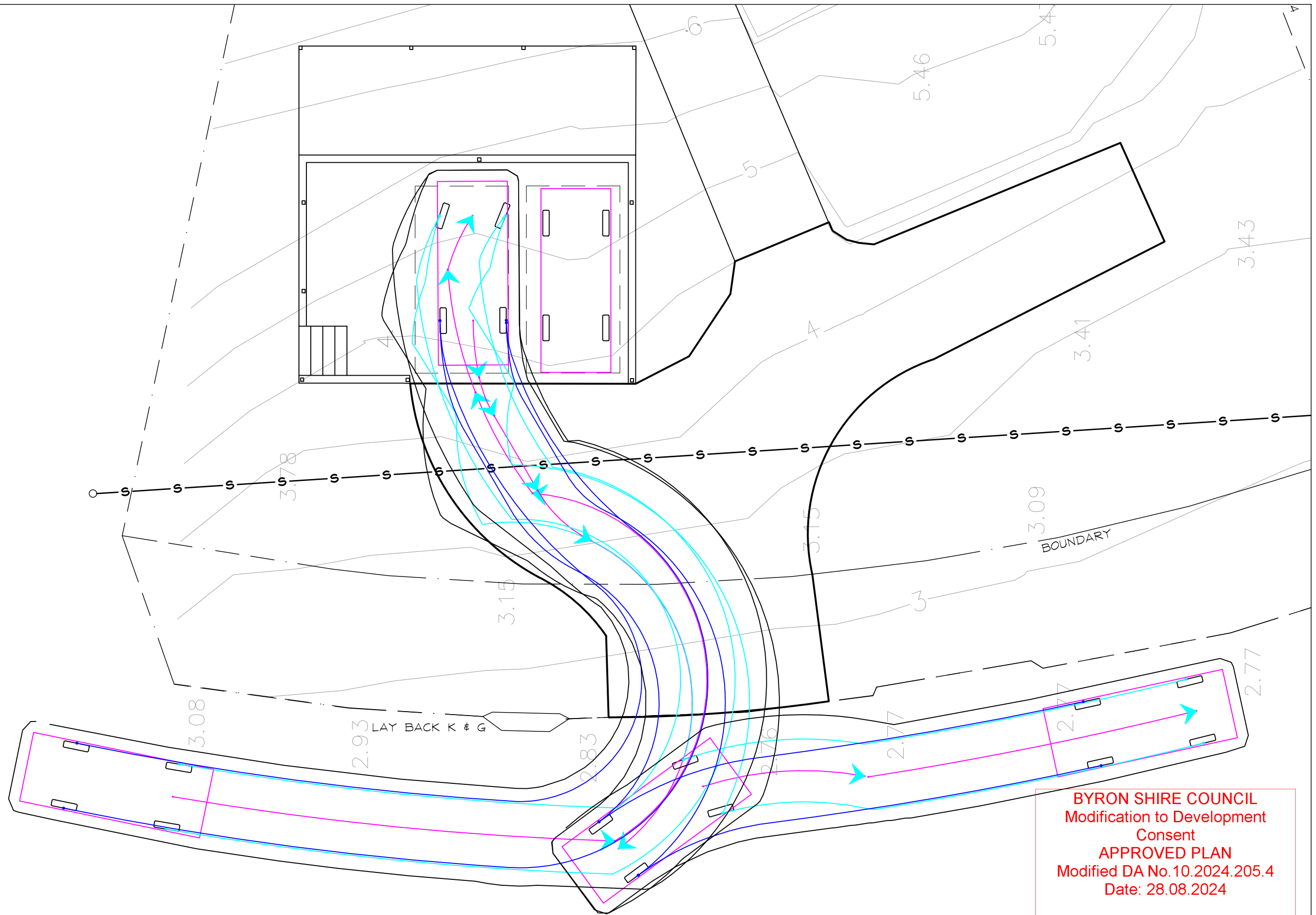
SURFACE GRADE		8.38%	15.95%	13.82%	FLAT		SURFACE GRADE
SURFACE LEVEL (m)	2.780	2.94	3.30	4.00	4.60		SURFACE LEVEL (m)
CHAINAGE (m)	0.000	1.91	4.192	8.927	16.125		CHAINAGE (m)

DRIVEWAY LONGITUDINAL SECTION

HORIZONTAL SCALE - 1:100 AT A3  
VERTICAL SCALE - 1:100 AT A3

BYRON SHIRE COUNCIL  
Modification to Development  
Consent  
APPROVED PLAN  
Modified DA No.10.2024.205.4  
Date: 28.08.2024

REVISIONS				<div><div><div><div>©</div><div>COPYRIGHT - LUCENA ENGINEERS PTY. LTD. AS DATE OF ISSUE</div></div><div><div>THIS DRAWING IS THE PROPERTY OF LUCENA ENGINEERS PTY. LTD. AND MUST NOT BE RETAINED, COPIED OR USED WITHOUT THE CONSENT OF THE COMPANY.</div></div><div><div>PRINCIPAL ENGINEERS SIGNATURE</div><div></div></div></div><div><div>Lucena</div><div>CIVIL &amp; STRUCTURAL ENGINEERS</div></div><div><div>t 02 6687 8182</div><div>www.lucena.com.au</div><div>office@lucena.com.au</div></div></div>	PROJECT VEHICLE TURNING  AT 8 ALOOTA CRESCENT, OCEAN SHORES NSW 2483 FOR LUTE	DRAWING TITLE SECTIONS / DETAILS 3				
							DESIGN DM	DRAWN MN	DRAWING SCALE AS SHOWN	SHEET SIZE A3
	A	FOR CONSTRUCTION	07.08.24				PROJECT REF No 240231		DRAWING No C4	REVISION A
	ISSUE	DESCRIPTION	DATE							



BYRON SHIRE COUNCIL  
Modification to Development  
Consent  
APPROVED PLAN  
Modified DA No.10.2024.205.4  
Date: 28.08.2024

REVIEWS			
	ISSUE	DESCRIPTION	DATE
	A	FOR CONSTRUCTION	07.08.24

© COPYRIGHT - LUCENA ENGINEERS PTY. LTD.  
AS DATE OF ISSUE

THIS DRAWING IS THE PROPERTY OF LUCENA ENGINEERS PTY. LTD. AND MUST NOT BE RETAINED, COPIED OR USED WITHOUT THE CONSENT OF THE COMPANY.

PRINCIPAL ENGINEERS SIGNATURE

*[Signature]*

**Lucena**  
CIVIL & STRUCTURAL ENGINEERS

t 02 6687 8182  
www.lucena.com.au  
office@lucena.com.au

PROJECT  
VEHICLE TURNING

AT  
8 ALOOTA CRESCENT, OCEAN SHORES NSW 2483

FOR  
LUTE

DRAWING TITLE			
VEHICLE TURNING			
DESIGN	DRAWN	DRAWING SCALE	SHEET SIZE
DM	MN	1:100	A3
PROJECT REF No		DRAWING No	REVISION
240231		VT1	A



CIVIL WORKS

1.

ALL CONSTRUCTION TO BE IN ACCORDANCE WITH LOCAL COUNCIL STANDARDS.
2.

FOR SETOUT REFER TO ARCHITECT'S DRAWINGS.
3.

ALL DIMENSIONS ARE IN MILLIMETRES UNLESS NOTED OTHERWISE.
4.

ALL LEVELS ARE GIVEN IN METRES UNLESS NOTED OTHERWISE.
5.

ALL LEVELS SHOWN ARE FINISHED SURFACE LEVELS UNLESS NOTED OTHERWISE.
6.

CONCRETE SHALL HAVE THE FOLLOWING PROPERTIES:

i)

CLASS OF CONCRETE SHALL BE NORMAL,

ii)

MAXIMUM SLUMP SHALL BE 80mm,

iii)

MAXIMUM AGGREGATE SIZE SHALL BE 20mm,

iv)

PRODUCTION ASSESSMENT OF CONCRETE STRENGTHS IS SUFFICIENT, AND

v)

MINIMUM 28 DAY COMPRESSIVE STRENGTH OF CONCRETE SHALL BE 25 MPa UNLESS NOTED OTHERWISE.
7.

CONCRETE WORKS SHALL CONFORM TO AS 3600.
8.

APPROVAL OF LOCAL AUTHORITY TO BE OBTAINED BY CONTRACTOR PRIOR TO CONSTRUCTING CROSSING.
9.

MINIMUM GRADE OF ALL STORMWATER DRAINAGE TO BE 1 IN 200. PIPES TO BE P.V.C., F.R.C OR R.C.
10.

R.C. AND F.R.C PIPES SHALL BE CLASS '2', RUBBER RING JOINTED UNLESS NOTED OTHERWISE.
11.

MINIMUM COVER TO STORMWATER PIPES SHALL BE 300mm IN LANDSCAPED AREAS AND 600mm UNDER ROAD PAVEMENTS UNLESS NOTED OTHERWISE.
12.

IT IS THE RESPONSIBILITY OF THE CONTRACTOR TO ENSURE THAT ADEQUATE EROSION AND SEDIMENTATION CONTROL DEVICES ARE ERECTED AND MAINTAINED AT ALL TIMES DURING CONSTRUCTION AND TO THE SATISFACTION OF COUNCIL.
13.

CONTRACTOR TO CONFIRM LOCATION AND DEPTH OF ALL SERVICES PRIOR TO COMMENCEMENT OF ANY EXCAVATION WORKS.
14.

SEDIMENTATION AND EROSION CONTROL MEASURES ARE TO BE INSTALLED AT ALL DRAINAGE STRUCTURES. ALL DISTURBED AREAS ARE TO BE STABILISED AS SPECIFIED AND DIRECTED.
15.

IT IS THE CONTRACTORS RESPONSIBILITY TO ENSURE THAT PROVISION IS MADE FOR THE INSTALLATION OF ALL SERVICES PRIOR TO THE CONSTRUCTION OF DRIVEWAYS, CARPARKS AND OTHER PAVED AREAS.
16.

THESE DRAWINGS ARE DIAGRAMMATIC ONLY AND ARE INTENDED TO INDICATE DESIGN IN ACCORDANCE WITH THE RELEVANT REGULATIONS AND REQUIREMENTS OF THE AUTHORITIES CONCERNED AND TO THE RELEVANT AUSTRALIAN STANDARDS. THEY DO NOT RELIEVE THE CONTRACTOR OR BUILDER FROM HIS RESPONSIBILITY TO COMPLY WITH THESE REQUIREMENTS, EVEN IF DRAWINGS ARE APPROVED.
17.

NATURAL SURFACE CONTOURS ARE COMPUTER INTERPOLATED FROM SURVEYORS ELECTRONIC FIELD DATA.

CIVIL WORKS (cont'd)

18.

NOT WITHSTANDING THE LIMITS OF EARTWORKS SHOWN ON THE DRAWINGS, THE ACTUAL LIMITS SHALL BE CONFIRMED ON SITE BY THE CONTRACTOR.
19.

PRIOR TO COMMENCEMENT OF CONSTRUCTION, THE CONTRACTOR IS TO ASCERTAIN THE LOCATION AND LEVEL OF EXISTING SERVICES TO HIS SATISFACTION. SERVICES SHOWN ON PLANS ARE TAKEN FROM SURVEYORS FIELD NOTES ONLY AND MAY NOT NECESSARILY INDICATE ALL SERVICES WITHIN THE WORKS AREA.

ROAD PAVEMENTS

1.

ALL WORK TO BE COMPLETED IN ACCORDANCE WITH THE RELEVANT COUNCIL'S CONSTRUCTION MANUAL AND DESIGN GUIDELINES.
2.

CONTRACTOR TO CONFIRM LOCATION, DEPTH AND EXTENT OF ALL SERVICES PRIOR TO COMMENCING ANY CONSTRUCTION.
3.

CONTRACTOR TO GIVE COUNCIL AND LUCENA ENGINEERS 48 HOURS NOTICE FOR ALL INSPECTIONS AND PROOF ROLLING.
4.

CONTRACTOR TO PREPARE AND SUBMIT A TRAFFIC CONTROL PLAN TO COUNCIL PRIOR TO COMMENCING WORKS. PLAN TO BE PREPARED BY A QUALIFIED PERSON(S).
5.

CONTRACTOR TO GIVE NOTICE TO COUNCIL WHEN WORKS ARE TO COMMENCE PRIOR TO STARTING WORK.

EROSION AND SEDIMENT CONTROL

GENERAL INSTRUCTIONS:-

1.

THIS PLAN IS TO BE READ IN CONJUNCTION WITH THE ENGINEERING PLANS, AND ANY OTHER PLANS OR WRITTEN INSTRUCTIONS THAT MAY BE ISSUED AND RELATING TO DEVELOPMENT AT THE SUBJECT SITE.
2.

THE SITE SUPERINTENDENT WILL ENSURE THAT ALL SOIL AND WATER MANAGEMENT WORKS ARE LOCATED AS INSTRUCTED IN THIS SPECIFICATION.
3.

ALL BUILDERS AND SUB-CONTRACTORS WILL BE INFORMED OF THEIR RESPONSIBILITIES IN MINIMISING THE POTENTIAL FOR SOIL EROSION AND POLLUTION TO DOWNSLOPE LANDS AND WATERWAYS.

CONSTRUCTION SEQUENCE:-

4.

THE SOIL EROSION POTENTIAL ON THIS SITE SHALL BE MINIMISED. HENCE WORKS SHALL BE UNDERTAKEN IN THE FOLLOWING SEQUENCE:-

4.1.

INSTALL SEDIMENT FENCES.

4.2.

UNDERTAKE SITE DEVELOPMENT WORKS IN ACCORDANCE WITH THE ENGINEERING PLANS. PHASE DEVELOPMENT SO THAT LAND DISTURBANCE IS CONFINED TO AREAS OF WORKABLE SIZE.

EROSION AND SEDIMENT CONTROL (cont'd)

EROSION CONTROL:-

5.

DURING WINDY CONDITIONS, LARGE, UNPROTECTED AREAS WILL BE KEPT MOIST (NOT WET) BY SPRINKLING WITH WATER TO KEEP DUST UNDER CONTROL.
6.

FINAL SITE LANDSCAPING WILL BE UNDERTAKEN AS SOON AS POSSIBLE AND WITHIN 20 WORKING DAYS FROM COMPLETION OF CONSTRUCTION ACTIVITIES.

FENCING:-

7.

STOCKPILES WILL NOT BE LOCATED WITHIN 2 METRES OF HAZARD AREAS, INCLUDING LIKELY AREAS OF CONCENTRATED OR HIGH VELOCITY FLOWS SUCH AS WATERWAYS. WHERE THEY ARE BETWEEN 2 AND 5 METRES FROM SUCH AREAS, SPECIAL SEDIMENT CONTROL MEASURES SHOULD BE TAKEN TO MINIMISE POSSIBLE POLLUTION TO DOWNSLOPE WATERS, E.G. THROUGH INSTALLATION OF SEDIMENT FENCING.
8.

ANY SAND USED IN THE CONCRETE CURING PROCESS (SPREAD OVER THE SURFACE) WILL BE REMOVED AS SOON AS POSSIBLE AND WITHIN 10 WORKING DAYS FROM PLACEMENT.
9.

WATER WILL BE PREVENTED FROM ENTERING THE PERMANENT DRAINAGE SYSTEM UNLESS IT IS RELATIVELY SEDIMENT FREE, I.E. THE CATCHMENT AREA HAS BEEN PERMANENTLY LANDSCAPED AND/OR ANY LIKELY SEDIMENT HAS BEEN FILTERED THROUGH AN APPROVED STRUCTURE.
10.

TEMPORARY SOIL AND WATER MANAGEMENT STRUCTURES WILL BE REMOVED ONLY AFTER THE LANDS THEY ARE PROTECTING ARE REHABILITATED.

OTHER MATTERS:-

11.

ACCEPTABLE RECEPTORS WILL BE PROVIDED FOR CONCRETE AND MORTAR SLURRIES, PAINTS, ACID WASHINGS, LIGHT-WEIGHT WASTE MATERIALS AND LITTER.
12.

RECEPTORS FOR CONCRETE AND MORTAR SLURRIES, PAINTS, ACID WASHINGS, LIGHT-WEIGHT WASTE MATERIALS AND LITTER ARE TO BE EMPTIED AS NECESSARY. DISPOSAL OF WASTE SHALL BE IN A MANNER APPROVED BY THE SITE SUPERINTENDENT.

SITE INSPECTION AND MAINTENANCE:-

13.

EROSION AND SEDIMENT CONTROL MEASURES SHALL BE INSPECTED AFTER RAINFALL EVENTS TO ENSURE THAT THEY OPERATE EFFECTIVELY. REPAIR AND OR MAINTENANCE SHALL BE UNDERTAKEN AS REQUIRED.

REVISIONS				© COPYRIGHT - LUCENA ENGINEERS PTY. LTD. AS DATE OF ISSUE	<div><div>Lucena</div><div>CIVIL &amp; STRUCTURAL ENGINEERS</div></div> <div><div>t 02 6687 8182</div><div>www.lucena.com.au</div><div>office@lucena.com.au</div></div>	PROJECT VEHICLE TURNING  AT 8 ALOOTA CRESCENT, OCEAN SHORES NSW 2483  FOR LUTE	DRAWING TITLE GENERAL NOTES			
				THIS DRAWING IS THE PROPERTY OF LUCENA ENGINEERS PTY. LTD. AND MUST NOT BE RETAINED, COPIED OR USED WITHOUT THE CONSENT OF THE COMPANY.			DESIGN DM	DRAWN MN	DRAWING SCALE NOT TO SCALE	SHEET SIZE A3
				PRINCIPAL ENGINEERS SIGNATURE			PROJECT REF No		DRAWING No	REVISION
	A	FOR CONSTRUCTION	07.08.24				240231		CGN1	A
	ISSUE	DESCRIPTION	DATE							